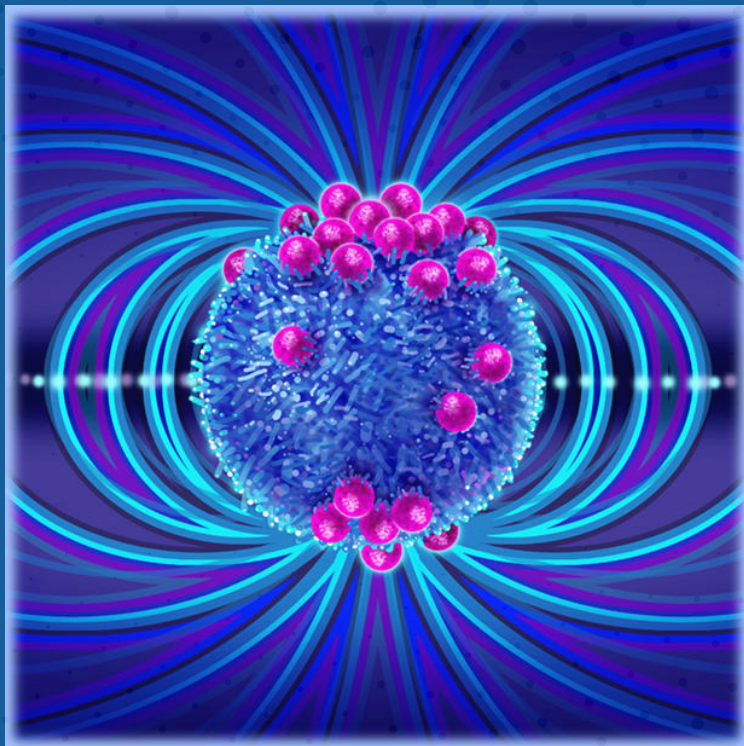


Advances in Immunoengineering: Fundamentals and Cutting Edge Advances



Tuesdays and Thursdays
January 2 - 16, 2025

INTERNET LIVE CONFERENCE

Presented by

Johns Hopkins School of Medicine

The Johns Hopkins Translational ImmunoEngineering (JH-TIE) Center

An NIBIB National Center for Biomedical Imaging and Bioengineering

The Johns Hopkins Translational Tissue Engineering Center (TTEC)

The Johns Hopkins Institute for NanoBioTechnology (INBT)

This activity has been approved for AMA PRA Category I Credits™.



JOHNS HOPKINS
MEDICINE

DESCRIPTION

The field of immunoengineering combines the diverse and complex fields of engineering and immunology and is transforming patient treatment in cancer, autoimmunity, regeneration, and transplantation.

There is a significant need for training of engineers in immunology and for training immunologists in quantitative engineering techniques.

Moreover, there is need to bridge basic immunological discoveries with advances in clinical application. This course will review the fundamentals of the immune system and its components, engineering strategies to modulate the immune system, and clinical applications to improve patient care and outcomes in the development of neoadjuvant immunotherapies, highlighting particular considerations for immunological mechanisms, clinical development, and pathologic response assessments.

WHO SHOULD ATTEND

The course is designed for graduate students, medical students, residents, and fellows in engineering, immunology, and related fields. Engineering and clinical faculty and members of industry will benefit from the course as well.

OBJECTIVES

After attending this activity, the learner will demonstrate the ability to:

- Review the fundamentals and recent discoveries in the function of the immune system.
- Identify engineering strategies to manipulate the immune system.
- Describe the clinical applications of immunoengineering.

ACCREDITATION STATEMENT

The Johns Hopkins University School of Medicine is accredited by the Accreditation Council for Continuing Medical Education (ACCME) to provide continuing medical education for physicians.



CREDIT DESIGNATION STATEMENT

The Johns Hopkins University School of Medicine designates this live activity for a maximum of 7 AMA PRA Category 1 Credits™. Physicians should claim only the credit commensurate with the extent of their participation in the activity.

POLICY ON PRESENTER AND PROVIDER DISCLOSURE

It is the policy of the Johns Hopkins School of Medicine that the presenter and provider globally disclose conflicts of interest. The Johns Hopkins School of Medicine OCME has established policies in place to identify and mitigate relevant conflicts of interest prior to this educational activity. Detailed disclosure will be made prior to presentation of the education.

OTHER CREDITS

American Academy of Nurse Practitioners National Certification Program accepts AMA PRA Category 1 Credit™ from organizations accredited by the ACCME.

American Nurses Credentialing Center (ANCC) accepts AMA PRA Category 1 Credit™ from organizations accredited by the ACCME.

National Commission on Certification of Physician Assistants (NCCPA) PAs may claim a maximum of 7 Category 1 credits for completing this activity. NCCPA accepts AMA PRA Category 1 Credit™ from organizations accredited by ACCME or a recognized state medical society.

The Johns Hopkins University has approved this activity for 7 contact hours for non-physicians.

JOHNS HOPKINS STATEMENT OF RESPONSIBILITY

The Johns Hopkins School of Medicine takes responsibility for the content, quality, and scientific integrity of this CME activity.

COPYRIGHT

All rights reserved. The Johns Hopkins School of Medicine. No part of this program may be used or reproduced in any manner whatsoever without written permission except in the case of brief quotations embodied in articles or reviews.

INTERNET CME POLICY

The Office of Continuing Medical Education (OCME) at the Johns Hopkins School of Medicine is committed to protecting the privacy of its members and customers. Johns Hopkins School of Medicine OCME maintains its internet site as an information resource and service for physicians, other health professionals and the public. OCME at the Johns Hopkins School of Medicine will keep your personal and credit information confidential when you participate in a CME Internet based program. Your information will never be given to anyone outside of the Johns Hopkins School of Medicine CME program. CME collects only the information necessary to provide you with the services that you request.

DISCLAIMER STATEMENT

The opinions and recommendations expressed by faculty and other experts whose input is included in this program are their own. This enduring material is produced for educational purposes only. Use of Johns Hopkins School of Medicine name implies review of educational format design and approach. Please review the complete prescribing information of specific drugs or combination of drugs, including indications, contraindications, warnings and adverse effects before administering pharmacologic therapy to patients.

HARDWARE/SOFTWARE REQUIREMENTS

Internet connection.



GENERAL INFORMATION

FREE REGISTRATION

Register Online: hopkinscme.cloud-cme.com/default.aspx?P=5&EID=57588

On the day of, please log into the online platform by 3:45 p.m. ET to test your connection. Exclusive log-in details will be provided via email the week prior.

You will receive a confirmation by e-mail. If you have not received it by December 26, 2023, call (410) 502-9636 to confirm that you are registered. A transcript of attendance will be available upon attestation of your credit hours and submission of the post activity online evaluation.

The Johns Hopkins University reserves the right to cancel or postpone any activity due to unforeseen circumstances. Under such circumstances registrants will be notified as soon as possible.

Johns Hopkins Students may also choose to sign up for this workshop as a one-credit pass/fail course that will appear on their transcript. To do this, please register for the unique course number below on SIS and check Canvas regularly for course assignments.

Ugrads: EN.580.403 Independent Study: Advances in Immunoengineering
MSE/PhD: EN.580.703 Independent Study: Advances in Immunoengineering

SYLLABUS

The syllabus will be accessible online and via your mobile device in the CloudCME App prior to the activity.

HOW TO OBTAIN CREDIT

Post activity, an online evaluation will be available to attendees to evaluate the activity and individual presentations and to identify future educational needs. Upon completion of the evaluation, the learner must attest to the number of hours in attendance. Credits earned will be added to the learner's transcript and immediately available for print. The last day to access the evaluation and attest to your CME credit is **March 2, 2025**.

An outcome survey will be sent to all physician attendees within two months post activity to assist us in determining what impact this activity had on the learner's practice.

AMERICANS WITH DISABILITIES ACT

The Johns Hopkins School of Medicine fully complies with the legal requirements of the ADA and the rules and regulations thereof. Please notify us if you have any special needs.

TO REGISTER OR FOR FURTHER INFORMATION

Register Online: hopkinscme.cloud-cme.com/default.aspx?P=5&EID=57588

Register by Phone (410) 502-9636
Register by Fax (866) 510-7088
Confirmation/Certificates/Transcripts..... (410) 502-9636
General Information (410) 955-2959
E-mail the Office of CME..... cmenet@jhmi.edu

Follow us on Twitter: twitter.com/HopkinsCME

Facebook: facebook.com/HopkinsCME



Check out our mobile app CloudCME.
Organization Code: HopkinsCME

For technical assistance with website, CloudCME or credits, please visit our tech support help page:
<https://hopkinscme.cloud-cme.com/about/help>

For general information, please visit the activity webpage at:
<https://hopkinscme.cloud-cme.com/aph.aspx?P=5&EID=57588>

Visit our JH-TIE website:
<https://jhtie.jhmi.edu/training/>

PROGRAM

Tuesdays and Thursdays * January 2 - 16, 2025 * 4:00 - 5:30 p.m. ET

Week 1 – Targeted Immune Interventions and Immunotherapies

Thursday, January 2, 2025

Nanomaterials for In Vivo Genetic Engineering of Target Immune Cells

Jordan Green

NK Cell Engineering Strategies for Cancer Immunotherapy

May Daher

Week 2 – Immunomodulation at the Multi-Scale

Tuesday, January 7, 2025

Biomaterials for Engineering Macrophages

Kara Spiller

Thursday, January 9, 2025

Cancer Engineering:

Immuno-Oncology in Three Dimensions

Greg Sawyer

**Discover and Engineer T-Cell Receptors
with Machine Learning**

Binbin Chen

**CAR-T Cells for the Treatment
of B-cell Mediated Autoimmune Disease**

Andreas Mackensen

Week 3 – Engineering Cells and Tissues as Living Drugs

Tuesday, January 14, 2025

Biomaterials for Immune Acceptance of Cellular Grafts

Andres Garcia

Thursday, January 16, 2025

**Engineering Precision Immunotherapies for
Autoimmune Diseases**

Max König

**Lipid Nanoparticles for Overcoming
Biological Barriers to mRNA Delivery**

Michael Mitchell

Nanotechnology at the Frontiers of Global Health

Anna Bershteyn

Presentation titles and other details can be found on the JH-TIE website: <https://jhtie.jhmi.edu/>

The Johns Hopkins School of Medicine takes responsibility for the content, quality and scientific integrity of this CME activity. This schedule is subject to change.

ACKNOWLEDGEMENT

The Johns Hopkins School of Medicine did not solicit or receive commercial funding from any commercial entity, including pharmaceutical and medical device manufacturers, for this activity.

We would like to acknowledge financial and management support made possible through an NIBIBP41 Grant, the Johns Hopkins School of Medicine, Provost's Office and Department of Pathology.



COURSE NUMBER: 80066400/57588

Advances in Immunoengineering: Fundamentals and Cutting Edge Advances

REGISTER ONLINE:

<https://hopkinscme.cloud-cme.com/default.aspx?P=5&EID=57588>

