

Johns Hopkins Melanoma and
Cutaneous Oncology Program
presents

Update on Melanoma and Non-Melanoma Skin Cancer

Thursday, May 13, 2021

Lectures from 6:30 p.m. to 10:00 p.m.

Description

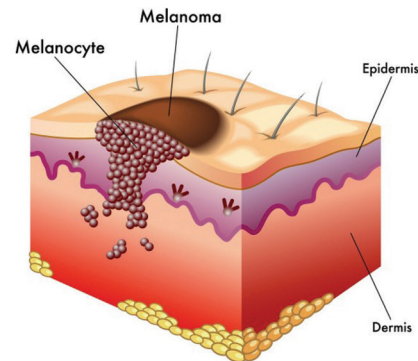
In the United States, the incidence of skin cancer is greater than that of all other cancers combined. Early diagnosis of melanoma and other aggressive skin cancers can be lifesaving. In recent years, new immunotherapies and targeted therapies have achieved positive results in many patients with advanced melanoma. This activity aims to update physicians with new information on diagnosis and treatment of melanoma and non-melanoma skin cancer. This activity will consist of a series of brief lectures and case presentations virtually.

Who Should Attend

This activity is intended for dermatologists, internists, family physicians, surgeons, plastic surgeons, dermatologic surgeons, medical oncologists, radiation oncologists, oncology nurses, and physician assistants.

Accreditation Statement

The Johns Hopkins University School of Medicine is accredited by the Accreditation Council for Continuing Medical Education (ACCME) to provide continuing medical education for physicians.



Credit Designation Statement

The Johns Hopkins University School of Medicine designates this live activity for a maximum of 3.5 AMA PRA Category 1 Credits™. Physicians should claim only the credit commensurate with the extent of their participation in the activity.



JOHNS HOPKINS
MEDICINE

Update on Melanoma and Non-Melanoma Skin Cancer

May 13, 2021



JOHNS HOPKINS
MEDICINE

Johns Hopkins University School of Medicine
Turner 20, 720 Rutland Avenue
Baltimore, Maryland 21205-2195

Non-Profit Org.
U.S. Postage
PAID
Bellmawr, NJ
Permit No. 2134

ACTIVITY DIRECTOR

William Sharfman, MD, FACP
Christine Gourin, MD, MPH

JOHNS HOPKINS SPEAKERS

Zelia Correa, MD, PhD
Meg Gerstenblith, MD
Julie Lange, MD, ScM
Evan Lipson, MD
Elise Ng, MD
Suzanne Topalian, MD
Anthony Tufaro, DDS, MD, FACS

LECTURE TOPICS INCLUDE:

- Update on Non-Melanoma Skin Cancer
- Challenging Melanoma Cases in Dermatopathology
- Management of Melanoma of the Head and Neck
- Update on Uveal Melanoma
- Adjuvant Therapy of High Risk Melanoma
- Integrating New Drugs in the Treatment of Advanced Melanoma
- Future Directions Melanoma Research
- Case Presentations

To Register or For Further Information

Registration Fee: \$35

Register Online:

hopkinscme.cloud-cme.com/default.aspx?P=0&EID=32226

Register by Phone

(410) 502-9636

Register by Fax

(866) 510-7088

Confirmation/Certificates/Transcripts

(410) 502-9636

General Information

(410) 955-2959

E-mail the Office of CME

cmenet@jhmi.edu

Follow us on Twitter: twitter.com/HopkinsCME

Facebook: facebook.com/HopkinsCME

CloudCME 

Check out our mobile app CloudCME.

Organization Code: HopkinsCME

For website and CloudCME mobile app technical difficulties, email: cmtechsupport@jhmi.edu

