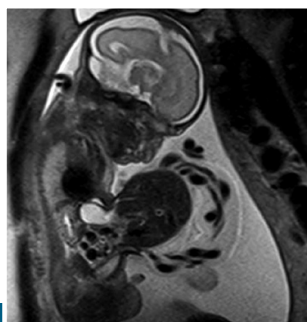
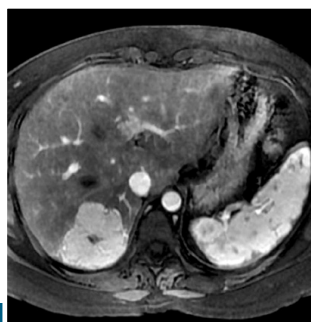
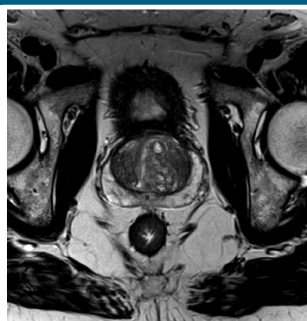
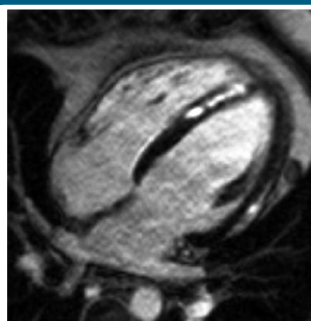


Johns Hopkins University School of Medicine
Department of Radiology and Radiological Science
Presents

Fourth Annual Fall Course

HOT TOPICS IN MR IMAGING

For the Technologist



September 26-27, 2020

A Virtual Learning Experience

Activity Director: Ihab R. Kamel, MD, PhD



JOHNS HOPKINS
MEDICINE

DESCRIPTION

The field of MRI is rapidly changing. As more magnets become available, and with the increasing use of higher field strengths, MR safety awareness becomes of paramount importance for MRI technologists, radiologists, patients and personnel working in the MRI environment. Safety of Gadolinium contrast agents continues to be important and technologists should learn how to screen patients who might be at risk for developing side effects or complications to those agents. The role of MRI in scanning patients with cardiac devices continues to grow and technologists need to be familiar with performing these imaging studies. The indications for performing prostate MRI continue to rise, especially with the use of MRI/Ultrasound image fusion to guide biopsy. MRI technologists need to be familiar with the optimized imaging technique for pediatric applications. It is crucial that technologists and other radiology staff receive updates and education in the latest MRI technology, not only to maintain their national license requirement but to be able to provide the best care to patients and properly address safety issues with MRI. The one way to accomplish these goals is to provide an annual CME-type imaging seminar where we can select leaders in the field of MRI to discuss the changes, and how these changes impact the delivery of patient care.

WHO SHOULD ATTEND

This activity is intended for MRI Technologists and Radiologists.

OBJECTIVES

After attending this activity, the learner will demonstrate the ability to:

- Restate basic knowledge of underlying principles of MRI.
- Discuss safety considerations of gadolinium-based contrast agents.
- Define and apply the increasing role of MRI in imaging the prostate.
- Discuss the increasing role of MRI in pediatric applications.

AMERICAN HEALTHCARE RADIOLOGY ADMINISTRATORS

This activity has been approved by AHRA, the approving RCEEM: The Association for Medical Imaging Management for a maximum of 12 Category A, ARRT continuing education credits. You must attend each session in its entirety to obtain credit. No partial session credit will be awarded.

POLICY ON PRESENTER AND PROVIDER DISCLOSURE

It is the policy of the Johns Hopkins School of Medicine that the presenter and provider globally disclose conflicts of interest. The Johns Hopkins School of Medicine OCME has established policies that will identify and resolve conflicts of interest prior to this educational activity. Detailed disclosure will be made prior to presentation of the education.

JOHNS HOPKINS STATEMENT OF RESPONSIBILITY

The Johns Hopkins School of Medicine takes responsibility for the content, quality, and scientific integrity of this CME activity.

COPYRIGHT

All rights reserved. The Johns Hopkins School of Medicine. No part of this program may be used or reproduced in any manner whatsoever without written permission except in the case of brief quotations embodied in articles or reviews.

INTERNET CME POLICY

The Office of Continuing Medical Education (OCME) at the Johns Hopkins School of Medicine is committed to protecting the privacy of its members and customers. Johns Hopkins School of Medicine OCME maintains its internet site as an information resource and service for physicians, other health professionals and the public. OCME at the Johns Hopkins School of Medicine will keep your personal and credit information confidential when you participate in a CME Internet based program. Your information will never be given to anyone outside of the Johns Hopkins School of Medicine CME program. CME collects only the information necessary to provide you with the services that you request.

DISCLAIMER STATEMENT

The opinions and recommendations expressed by faculty and other experts whose input is included in this program are their own. This enduring material is produced for educational purposes only. Use of Johns Hopkins School of Medicine name implies review of educational format design and approach. Please review the complete prescribing information of specific drugs or combination of drugs, including indications, contraindications, warnings and adverse effects before administering pharmacologic therapy to patients.

HARDWARE/SOFTWARE REQUIREMENTS

Internet Connection.

AMERICANS WITH DISABILITIES ACT

The Johns Hopkins School of Medicine fully complies with the legal requirements of the ADA and the rules and regulations thereof. *Please notify us if you have any special needs.*

GENERAL INFORMATION

REGISTRATION

Saturday, September 26, 2020 | 7:55 a.m.

LOCATION

Online via Zoom.

FEES

Register Online:

<https://hopkinscme.cloud-cme.com/default.aspx?P=5&EID=25367>

Methods of Payment: We require full payment prior to the start of the activity. On-site payments by credit card only. The registration fee includes instructional materials.

One Day..... \$49

Two Days..... \$99

Pre-registration is required by September 20, 2020. On the day of, please log into the online platform by 7:55 a.m. EST to test your connection. Exclusive log-in details will be provided via email the week prior.

You will receive a confirmation by e-mail. If you have not received it by September 20, 2020, call (410) 502-9636 to confirm that you are registered. A transcript of attendance will be available upon attestation of your credit hours and submission of the post activity online evaluation.

The Johns Hopkins University reserves the right to cancel or postpone any activity due to unforeseen circumstances. Under such circumstances registrants will be notified as soon as possible.

LATE FEE AND REFUND POLICY

A \$50 late fee applies to registrations received after 5:00 p.m. ET on September 20, 2020. A handling fee of \$50 will be deducted for cancellation. An additional fee may apply for cancellation of other events, including workshops and social activities. Refund requests must be received by fax or mail by September 20, 2020. No refunds will be made thereafter. Transfer of registration to another Johns Hopkins activity in lieu of cancellation is not possible.

HOW TO OBTAIN CREDIT

Technologists will need to listen for the unique code announced during each session and record the code on the attendance sheet. Upon completion of the online post activity evaluation with attestation, the learner will need to enter the session codes and attest to the number of hours in attendance. You must attend each session in its entirety to obtain credit. No partial credit will be given.

Please evaluate the activity, individual presentations and provide feedback to identify future educational needs.

Credits earned will be added to the learner's transcript and immediately available for print. The last day to access the evaluation and attest to your credits is **November 10, 2020**.

An outcome survey will be sent to all physician attendees within two months post activity to assist us in determining what impact this activity had on the learner's practice.

TO REGISTER OR FOR FURTHER INFORMATION



Register Online

hopkinscme.cloud-cme.com/default.aspx?P=5&EID=25367

Register by Phone.....(410) 502-9636
Register by Fax.....(866) 510-7088
Confirmation/Certificates/Transcripts.....(410) 502-9636
General Information.....(410) 955-2959
E-mail the Office of CME.....cmenet@jhmi.edu

Follow us on Twitter: twitter.com/HopkinsCME

Facebook: facebook.com/HopkinsCME

CloudCME

Check out our mobile app CloudCME.
Organization Code: *HopkinsCME*

For website and CloudCME mobile app technical difficulties, email:
cmetechsupport@jhmi.edu

For general information, please visit the activity webpage at
hopkinscme.cloud-cme.com/default.aspx?P=5&EID=25367

SYLLABUS

The syllabus will be accessible online and via your mobile device in the CloudCME App prior to the activity.

ACKNOWLEDGEMENT

Applications for commercial support from health care related industries are pending. A complete list of contributors will be provided in the syllabus. Please note that commercial support received is solely for the educational component of the activity.

Please note: The Physician Payments Sunshine Act was enacted by Congress to increase public awareness of financial relationships between drug and medical device manufacturers and physicians. In compliance with the requirements of this Act, the commercial supporter/s of this activity may require the Johns Hopkins School of Medicine to report certain professional information (such as name, address, National Provider Identifier (NPI), and State License number) of physician attendees who receive complimentary food and beverage in conjunction with a CME activity. The commercial supporter is required to submit the collected data to the Centers for Medicare and Medicaid Services which will then publish the data on its website.

SATURDAY, SEPTEMBER 26, 2020

| | |
|---------------|--|
| 7:55 – 8:00 | Welcome and Conference Goals |
| 8:00 – 8:35 | MRI of the Female Pelvis: The Basics Linda Chu, MD |
| 8:35 – 9:10 | Renal and Adrenal MRI Linda Chu, MD |
| 9:10 – 9:45 | MR Enterography Linda Chu, MD |
| 9:45 – 10:00 | Questions and Answers |
| 10:00 – 10:20 | Break |
| 10:20 – 10:55 | Rectal Cancer MRI Atif Zaheer, MD |
| 10:55 – 11:30 | Dynamic MRI of the Pelvis Atif Zaheer, MD |
| 11:30 – 12:05 | MRI of the Prostate Atif Zaheer, MD |
| 12:05 – 12:20 | Questions and Answers |
| 12:20 – 1:00 | Lunch Break |
| 1:00 – 1:35 | Contract and Non-Contrast MRA Stefan Zimmerman, MD |
| 1:35 – 2:10 | Cardiac MRI Stefan Zimmerman, MD |
| 2:10 – 2:45 | Managing Common MRI Artifacts Stefan Zimmerman, MD |
| 2:45 – 3:00 | Questions and Answers |

SUNDAY, SEPTEMBER 27, 2020

| | |
|---------------|--|
| 8:00 – 8:35 | MRI of the Skull Base Rohini Nadgir, MD |
| 8:35 – 9:10 | Post-Treatment Imaging of Head and Neck Tumors Rohini Nadgir, MD |
| 9:10 – 9:45 | MR Imaging of Infections of the Brain Rohini Nadgir, MD |
| 9:45 – 10:00 | Questions and Answers |
| 10:00 – 10:20 | Break |
| 10:20 – 10:55 | MRI of the Knee Shadpour Demehri, MD |
| 10:55 – 11:30 | MRI of the Shoulder Shadpour Demehri, MD |
| 11:30 – 12:05 | MRI of the Wrist Shadpour Demehri, MD |
| 12:05 – 12:20 | Questions and Answers |
| 12:20 – 1:00 | Lunch Break |
| 1:00 – 1:35 | Gadolinium Safety Ihab Kamel, MD, PhD |
| 1:35 – 2:10 | MRI of Patients with Devices Ihab Kamel, MD, PhD |
| 2:10 – 2:45 | MRI Operations During the COVID-19 Pandemic Ihab Kamel, MD, PhD |
| 2:45 – 3:00 | Questions and Answers |
| 3:00 | Adjourn |

You will receive an email notification to complete the evaluation form and to attest to the number of hours in attendance.

The Johns Hopkins School of Medicine takes responsibility for the content, quality and scientific integrity of this CME activity. This schedule is subject to change.

JOHNS HOPKINS SPEAKERS**ACTIVITY DIRECTOR**

Ihab R. Kamel, MD, PhD
Professor of Radiology,
Radiological Science and Oncology
Chairman, Department of Imaging Johns Hopkins
Bayview Medical Center

Linda Chu, MD

Associate Professor of Radiology and Radiological Science

Shadpour Demehri, MD

Associate Professor of Radiology and Radiological Science

Rohini Nadgir, MD

Assistant Professor of Radiology and Radiological Science

Atif Zaheer, MD

Associate Professor of Radiology and Radiological Science

Stefan Zimmerman, MD

Associate Professor of Radiology and Radiological Science