

CONTINUING MEDICAL EDUCATION

SAVE  
THE  
DATE

Johns Hopkins University School of Medicine  
Division of Interventional Pulmonology

*Presents*

10th Annual

# Evaluation and Management of Pleural Disease

February 3-4, 2020



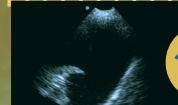
1910



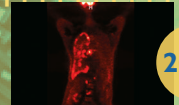
1930



1960



1990



2020

Arcade Room, Chevy Chase Bank Conference Center  
The Sheikh Zayed Tower

and the

Minimally Invasive Surgical Training and Innovation Center (MISTIC)  
The Johns Hopkins Hospital  
Baltimore, Maryland



JOHNS HOPKINS  
MEDICINE

10th Annual

# Evaluation and Management of Pleural Disease

February 3-4, 2020

## TO REGISTER or FOR FURTHER INFORMATION

### Register Online

[hopkinscme.cloud-cme.com/aph.aspx?P=5&EID=18619](http://hopkinscme.cloud-cme.com/aph.aspx?P=5&EID=18619)

### Register by Phone

(410) 502-9636

### Register by Fax

(866) 510-7088

### Confirmation/Certificates/Transcripts

(410) 502-9636

### General Information

(410) 955-2959

### E-mail the Office of CME

[cmenet@jhmi.edu](mailto:cmenet@jhmi.edu)

### Follow us on Twitter:

[twitter.com/HopkinsCME](https://twitter.com/HopkinsCME)

### Facebook:

[facebook.com/HopkinsCME](https://facebook.com/HopkinsCME)

### Sponsoring Division Website:

[hopkinsmedicine.org/pulmonary/clinics/interventional/](http://hopkinsmedicine.org/pulmonary/clinics/interventional/)

### For general information, please visit the activity webpage at

[hopkinscme.cloud-cme.com/aph.aspx?P=5&EID=18619](http://hopkinscme.cloud-cme.com/aph.aspx?P=5&EID=18619)

CloudCME 

### Check out our mobile app CloudCME.

Organization Code: *hopkinscme*

### For website and cloudCME mobile app technical difficulties, email:

[cmtechsupport@jhmi.edu](mailto:cmtechsupport@jhmi.edu)

