



JOHNS HOPKINS
M E D I C I N E

Office of Continuing Medical Education
Johns Hopkins University School of Medicine
Turner 20, 720 Rutland Avenue
Baltimore, Maryland 21205-2195

45TH ANNUAL TOPICS IN
**Gastroenterology and
Hepato-Biliary Update**
October 2-4, 2019 | Baltimore, Maryland

Register Online:
hopkinscme.cloud-cme.com/default.aspx?P=5&EID=18537

Non-Profit Org.
U.S. Postage
PAID
Bellmawr, NJ
Permit No. 2134

DATED MATERIAL



Check out our mobile app CloudCME.

CloudCME

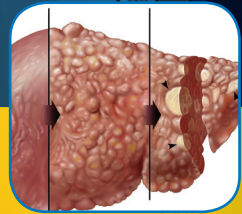
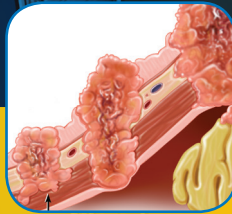
Organization Code: Hopkinscme

Johns Hopkins University School of Medicine
Division of Gastroenterology
and the Institute for Johns Hopkins Nursing
Present

45TH ANNUAL TOPICS IN
**Gastroenterology and
Hepato-Biliary Update**

October 2-4, 2019

Thomas B. Turner Building
Johns Hopkins Medical Institutions
Baltimore, Maryland



ACTIVITY DIRECTORS:

Anthony Kalloo, MD

Eun Ji Shin, MD, PhD

CO-DIRECTORS:

Richard Burkhart, MD
Mouen Khashab, MD
Mark Lazarev, MD
Vikesh Singh, MD, MSc

Ellen Stein, MD
Megan Walker, RN
Tinsay Woreta, MD, MPH

- Nursing Track
- Meet National And International Faculty
- Discuss Your Challenging Cases With The Experts During Lunch With The Professors
- This activity has been approved for *AMA PRA Category 1 Credit™*.
- ABIM MOC Points Available

DESCRIPTION

This activity will provide an update and comprehensive overview of a wide range of topics of interest to the practicing gastroenterologist, surgeon, family physician, internist, physician assistant, nurse and nurse practitioner. The understanding of the pathophysiology, natural history and treatment of diseases of the digestive tract and liver is progressing at a rapid pace. This activity will provide practitioners who care for patients with digestive diseases with an in-depth knowledge of recent, cutting-edge advancements in Gastroenterology and Hepatology. Moreover, practitioners will be informed about new therapies and treatments on the horizon in order to be prepared to inform patients and field their questions.

An important feature of this activity is its case panel discussions. One of our frequent challenges is making practical use of knowledge. Therefore, the activity format will include case presentation discussion sessions with a multidisciplinary panel of experts from medical, endoscopic and surgical disciplines, discussing diagnostic and management controversies. Among areas of focus for these panels will be inflammatory bowel disease, esophageal disorders, gastrointestinal neoplasia, motility and liver disease, including liver transplantation. During the lunchtime session, attendees will have the opportunity to discuss controversies specific to their personal practices with activity faculty.

WHO SHOULD ATTEND

This activity is intended for gastroenterologists, gastroenterology fellows and advanced fellows, surgeons, hepatologists, family practitioners, internists, physician assistants, nurses, nurse practitioners and other allied health professionals with an interest in gastroenterology.

OBJECTIVES

After attending this activity, the participant will demonstrate the ability to:

- Discuss the multidisciplinary approach to management of obesity.
- Describe the latest approaches to treat fatty liver disease.
- Discuss the management options for pancreatic diseases.
- Discuss the multidisciplinary approach to management of esophageal diseases.
- Describe the latest therapies for inflammatory bowel disease.

ACCREDITATION STATEMENTS

The Johns Hopkins University School of Medicine is accredited by the Accreditation Council for Continuing Medical Education (ACCME) to provide continuing medical education for physicians.



The Institute for Johns Hopkins Nursing is accredited as a provider of continuing nursing education by the American Nurses Credentialing Center's Commission on Accreditation.

CREDIT DESIGNATION STATEMENT

The Johns Hopkins University School of Medicine designates this live activity for a maximum of 25.75 *AMA PRA Category 1 Credits™*. Physicians should claim only the credit commensurate with the extent of their participation in the activity.

MAINTENANCE OF CERTIFICATION (MOC)

Successful completion of this CME activity, which includes participation in the evaluation component, enables the participant to earn up to 25.75 medical knowledge MOC points in the American Board of Internal Medicine's (ABIM) Maintenance of Certification (MOC) program. Participants will earn MOC points equivalent to the amount of CME credits claimed for the activity. It is the CME activity provider's responsibility to submit participant completion information to ACCME for the purpose of granting ABIM MOC credit."



OTHER CREDITS

Application for CME credit has been filed with the **American Academy of Family Physicians**. Determination of credit is pending.

This 25.75 contact hour educational activity is jointly provided with **The Institute for Johns Hopkins Nursing**.

American Academy of Nurse Practitioners National Certification Program accepts *AMA PRA Category 1 Credit™* from organizations accredited by the ACCME.

PAs may claim a maximum of 25.75 Category 1 credits for completing this activity. **NCCPA** accepts *AMA PRA Category 1 Credit™* from organizations accredited by ACCME or a recognized state medical society.

The Johns Hopkins University has approved this activity for 25.75 **contact hours for non-physicians**.

POLICY ON SPEAKER AND PROVIDER DISCLOSURE

It is the policy of the Johns Hopkins School of Medicine and the Institute for Johns Hopkins Nursing that the speaker and provider globally disclose conflicts of interest. The Johns Hopkins School of Medicine OCME has established policies that will identify and resolve conflicts of interest prior to this educational activity. Detailed disclosure will be made prior to presentation of the education.

REGISTRATION

Wednesday, October 2, 2019 • 7:15 – 7:50 a.m.

LOCATION

Thomas B. Turner Building
Johns Hopkins School of Medicine
720 Rutland Avenue
Baltimore, Maryland 21205

The Turner Building is located on Rutland Avenue at Monument Street. Directions and campus parking information are available on our website under the Contact Us tab at HopkinsCME.cloud-cme.com. Handicapped parking is available in the nearby Rutland Garage. Complimentary round-trip transportation for attendees staying at conference headquarters hotel will be provided.

Johns Hopkins is smoke-free.

FEES

Register Online:

hopkinscme.cloud-cme.com/aph.aspx?P=5&EID=18537

Methods of Payment: We require full payment prior to the start of the activity. On-site payments by credit card only. The registration fee includes instructional materials, continental breakfasts, refreshment breaks and lunches.

Physicians \$550

Residents*/Fellows*/Nurses/NPs/PAs/

Allied Health Professionals..... \$125

**with verification of status*

Nursing Track (Thursday) Only

(NPs/RNs)..... \$ No Charge

You will receive a confirmation by e-mail. If you have not received it by **September 26, 2019**, call (410) 502-9636 to confirm that you are registered. A transcript of attendance will be available upon attestation of your credit hours and submission of the post activity online evaluation.

The Johns Hopkins University reserves the right to cancel or postpone any activity due to unforeseen circumstances. In this event, the University will refund the registration fee but is not responsible for travel expenses. Additionally, we reserve the right to change the venue to a comparable venue. Under such circumstances registrants will be notified as soon as possible.

LATE FEE AND REFUND POLICY

A \$50 late fee applies to registrations received after 5:00 p.m. ET on **September 26, 2019**. A handling fee of \$50 will be deducted for cancellation. An additional fee may apply for cancellation of other events, including workshops and social activities. Refund requests must be received by fax or mail by **September 26, 2019**. No refunds will be made thereafter. Transfer of registration to another Johns Hopkins activity in lieu of cancellation is not possible.

SYLLABUS

The syllabus will be accessible online and via your mobile device in the CloudCME App prior to the activity.

HOTEL AND TRAVEL INFORMATION

Residence Inn by Marriott Baltimore
at the Johns Hopkins Medical Campus
800 North Wolfe Street
Baltimore, Maryland 21205
(443) 524-8400
Web Site: www.marriott.com

HOTEL RESERVATION CUT-OFF DATE: September 2, 2019

The Residence Inn Baltimore is located on the Johns Hopkins Medical Campus. Make your reservation at <https://bit.ly/2Kdy359> or call the hotel directly and specify that you are attending the **Johns Hopkins CME Topics in Gastroenterology** to receive the special group rate of \$149 for one bedroom king suite, plus tax. On-site parking is available at the hotel at an additional charge. Check-in time is 4:00 p.m. Check-out time is 12:00 p.m.

HOW TO OBTAIN CREDIT

Post activity, an online evaluation will be available to attendees to evaluate the activity and individual presentations and to identify future educational needs. Upon completion of the evaluation, the learner must attest to the number of hours in attendance. Credits earned will be added to the learner's transcript and immediately available for print. **The last day to access the evaluation and attest to your credits is November 18, 2019.**

An outcome survey will be sent to all physician attendees within two months post activity to assist us in determining what impact this activity had on the learner's practice.

AMERICANS WITH DISABILITIES ACT

The Johns Hopkins School of Medicine and the Institute for Johns Hopkins Nursing fully comply with the legal requirements of the ADA and the rules and regulations thereof. *Please notify us if you have any special needs.*

UPCOMING GI CONFERENCES

38th Medical and Surgical Gastroenterology
January 24 – February 1, 2020 • Vail, Colorado

20th Annual Gastroenterology and Hepatology: Viva la Vida

March 10 – 13, 2020 • San Juan, Puerto Rico

**Fourth Annual HITEC:
Hopkins International Therapeutic
Endoscopy Course**

April 1 – 3, 2020 • Baltimore, Maryland

**46th Topics in Gastroenterology
and Hepato-Biliary Update**

Fall 2020 TBD • Baltimore, Maryland

PROGRAM

WEDNESDAY, OCTOBER 2, 2019

- 7:15 – 7:50 Registration and Continental Breakfast
7:50 – 8:00 **Welcome and Conference Goals**
Anthony Kalloo, MD

Session Chair: Vivek Kumbhari, MD

- 8:00 – 8:20 **Bariatric Surgery**
Gina Adrales, MD, MPH
8:20 – 8:40 **Managing Complications of Bariatric Surgery**
Vivek Kumbhari, MD
8:40 – 9:00 **Surgical and Endobariatric Recidivists and Non-Responders: What Are Our Options?**
Dilhana Badurdeen, MBBS
9:00 – 9:20 **Endoscopic Bariatric Therapies: What is State-of-the-Art in 2019?**
Vivek Kumbhari, MD
9:20 – 9:40 **Strategies to Move from “Endoscopic” to Non-Procedural Approaches to Weight Loss**
Ashish Nimgoankar, MD
9:40 – 9:55 Questions and Answers
9:55 – 10:10 Refreshment Break

Session Chair: Vikesh Singh, MD, MSc

- 10:10 – 10:30 **Autoimmune Pancreatitis: Tips on Evaluation and Management**
Elham Afghani, MD
10:30 – 10:50 **Evaluation and Management of Disrupted and Disconnected Pancreatic Ducts**
Vikesh Singh, MD, MSc
10:50 – 11:20 **Managing Pain in Chronic Pancreatitis: State-of-the-Art**
Anna Phillips, MD, MS
11:20 – 11:45 **Total Pancreatectomy with Islet Autotransplantation: Patient Selection, Surgical Approaches and Outcomes**
Jin He, MD
11:45 – 12:00 Questions and Answers
12:00 – 1:00 Lunch with the Professors

Session Chair: Gerard Mullin, MD

- 1:00 – 1:20 **Atypical GERD Symptoms: Diagnosis and Management – Belches, Chest Pain, Globus and Beyond**
Eduardo Gonzalez-Velez, MD
1:20 – 1:40 **Dysphagia: Evaluation and Management**
Tsion Abdi, MD
1:40 – 2:10 **How I Practice: Work Up of the Vomiting Patient in the Age of Marijuana– History Techniques, New Testing Options, and Clinical Acumen**
Baha Moshiree, MD, MSc
2:10 – 2:30 **Cyclical Vomiting Syndrome Management**
Robert Bulat, MD
2:30 – 2:50 **Diet and the Gut Health in Functional Disorder: What We Learned from the 2019 AGA Freston Conference**
Gerard Mullin, MD
2:50 – 3:10 Refreshment Break

Session Chair: Ellen Stein, MD

- 3:10 – 3:30 **Work-up of Chronic Diarrhea**
Marshall Bedine, MD
3:30 – 3:50 **IBS: Diarrhea–Slow the Flow–Dietary Interventions and Medications to Improve Symptoms**
Shadi Yarandi, MD
3:50 – 4:20 **Recognizing and Managing Pelvic Floor Dysfunction in Patients with GI Symptoms**
Baha Moshiree, MD, MSc
4:20 – 4:40 **Management of Fecal Incontinence**
Susan Gearhart, MD
4:40 – 5:00 **IBS-Constipation: Moving What Matters – New Drugs and Old Foods**
Ellen Stein, MD

THURSDAY, OCTOBER 3, 2019

- 7:30 – 8:00 Continental Breakfast

Session Chair: Mouen Khashab, MD

- 8:00 – 8:20 **Endohepatology: Current Practices and Future Directions**
Olaya Brewer, MD
8:20 – 8:40 **POEM: From A to Z**
Mouen Khashab, MD
8:40 – 9:00 **Familial Polyposis Syndromes: A Primer for the Endoscopist**
Francis Giardiello, MD
9:00 – 9:20 **Colonic ESD: Indications and Techniques**
Hiroyuki Aihara, MD, PhD, FACC, FASGE
9:20 – 10:00 **Challenging Endoscopy Cases from The Johns Hopkins Hospital**
Mouen Khashab, MD
10:00 – 10:15 Refreshment Break

Session Chair: Marcia Canto, MD, MHS

- 10:15 – 10:35 **Endoscopic Therapy for GERD**
Marcia Canto, MD, MHS
10:35 – 10:55 **Surgical Treatment for GERD**
Katherine Lamond, MD
10:55 – 11:15 **Endoscopic Management for Barrett's Neoplasia**
Saowanee Ngamruengphong, MD
11:15 – 11:40 **How to Improve Endoscopic Detection of Early Gastric Neoplasia**
Hiroyuki Aihara, MD, PhD, FACC, FASGE
11:40 – 12:00 **Approach to Subepithelial Lesions in Upper GI Tract**
Saowanee Ngamruengphong, MD
12:00 – 1:00 Lunch with the Professors

Session Chair: James Hamilton, MD

- 1:00 – 1:20 **Alcoholic Liver Disease and Liver Transplantation**
Andrew Cameron, MD, PhD
1:20 – 1:40 **Live Donor Liver Transplantation**
Ahmet Gurakar, MD
1:40 – 2:00 **The Basics of Genetic Causes of Liver Disease**
James Hamilton, MD
2:00 – 2:20 **Noninvasive Assessments of Liver Fibrosis**
Po-Hung Chen, MD
2:20 – 2:40 **Remaining Challenges in the Treatment of Viral Hepatitis**
Mark Sulkowski, MD
2:40 – 3:00 **Hepatic Encephalopathy**
Natajaran Ravendhran, MD
3:00 – 3:15 Refreshment Break

Session Chair: Tinsay Woreta, MD, MPH

- 3:15 – 3:40 **Acute on Chronic Liver Failure**
K. Rajender Reddy, MD
- 3:40 – 4:00 **Advances in Interventional Radiology in the Management of Liver Diseases**
Christos Georgiades, MD, PhD
- 4:00 – 4:20 **Breakthroughs in the Management of Hepatocellular Cancer**
Amy Kim, MD
- 4:20 – 4:40 **Surgical Approaches to Benign and Malignant Liver Disease**
Will Burns, MD
- 4:40 – 5:00 **Updates in the Management of Non-Alcoholic Fatty Liver Disease**
Tinsay Woreta, MD, MPH

FRIDAY, OCTOBER 4, 2019

- 7:30 – 8:00 Continental Breakfast

Session Chair: Joanna Melia, MD

- 8:00 – 8:20 **IBD: Approach to Diagnosis**
Helen Yu, MD
- 8:20 – 8:40 **Microscopic Colitis: Best Approach to Treatment**
Reezwana Chowdhury, MD
- 8:40 – 9:00 **Therapeutic Endoscopy in IBD: From Stricture Dilatation to Polyp Removal**
Alyssa Parian, MD
- 9:00 – 9:20 **Biosimilars in IBD: Are They Taking Over?**
Joanna Melia, MD
- 9:20 – 9:40 **Non-Pharmacologic Approaches to IBD**
Brindusa Truta, MD
- 9:40 – 9:55 Questions and Answers
- 9:55 – 10:10 Refreshment Break

Session Chair: Mark Lazarev, MD

- 10:10 – 10:30 **Personalized Therapy for Crohn's: Are We There Yet?**
Florin Selaru, MD
- 10:30 – 10:50 **Dysplasia Surveillance in IBD: Best Practices**
Mark Lazarev, MD

- 10:50 – 11:10 **Approach to the Medically Refractory Crohn's Patient**
Aline Charabaty, MD
- 11:10 – 11:30 **Perils and Pitfalls of J-pouch Creation**
Chady Atallah, MD
- 11:30 – 12:00 **Post-Operative Prophylaxis in IBD**
Miguel Regueiro, MD
- 12:00 – 1:00 Lunch with the Professors

Session Chair: Richard Burkhart, MD

- 1:00 – 1:30 **Non-Invasive Colon Cancer Screening**
Christopher Fain, MD
- 1:30 – 2:00 **Best Practices to Improve ADR**
Simon Mathews, MD
- 2:00 – 2:20 **Pancreatic Cystic Neoplasms: What Testing Do We Need?**
Elham Afghani, MD
- 2:20 – 2:40 **Modern Approaches to Pancreatic Cancer**
Richard Burkhart, MD
- 2:40 – 3:00 Questions and Answers
- 3:00 – 3:15 Refreshment Break
- 3:15 – 3:40 **Endoscopy in Coagulopathic Patient**
Katherine Bull-Henry, MD, MBA
- 3:40 – 4:00 **Controversies in SIBO**
Hazel Veloso, MD
- 4:00 – 4:20 **Surgery for Paraesophageal Hernia**
Michael Marohn, DO
- 4:20 – 4:40 **How Will the Rise of Digital Technology/Consumerism Impact Your Clinical Practice?**
Simon Mathews, MD
- 4:40 – 5:00 Questions and Answers
- 5:00 Summary
Adjourn

You will receive an email notification to complete the evaluation form and to attest to the number of hours in attendance. The registration desk will remain open during conference hours.

The Johns Hopkins School of Medicine takes responsibility for the content, quality and scientific integrity of this CME activity.

The schedule is subject to change.

TO REGISTER OR FOR FURTHER INFORMATION

Register Online

hopkinscme.cloud-cme.com/default.aspx?P=5&EID=18537

Register by Phone

(410) 502-9636

Register by Fax

(866) 510-7088

Confirmation/Certificates/Transcripts

(410) 502-9636

General Information

(410) 955-2959

E-mail the Office of CME

cmenet@jhmi.edu

Follow us on Twitter: twitter.com/HopkinsCME

Facebook: facebook.com/HopkinsCME

Check out our mobile app CloudCME.



Organization Code: **HopkinsCME**

For website and CloudCME mobile app technical difficulties, email: cmetechnsupport@jhmi.edu

For general information, please visit the activity webpage at hopkinscme.cloud-cme.com/aph.aspx?P=5&EID=18537

Acknowledgement

Applications for commercial support from health care related industries are pending. A complete list of contributors will be provided in the syllabus. Please note that commercial support received is solely for the educational component of the activity and will not be used to provide food and beverage.

Please note: The Physician Payments Sunshine Act was enacted by Congress to increase public awareness of financial relationships between drug and medical device manufacturers and physicians. In compliance with the requirements of this Act, the commercial supporter/s of this activity may require the Johns Hopkins University School of Medicine to report certain professional information (such as name, address, National Provider Identifier (NPI), and State License number) of physician attendees who receive complimentary food and beverage in conjunction with a CME activity. The commercial supporter is required to submit the collected data to the Centers for Medicare and Medicaid Services which will then publish the data on its website.

NURSING TRACK

THURSDAY, OCTOBER 3, 2019

- 7:15 – 7:50 Registration and Continental Breakfast
7:50 – 8:00 **Welcome and Conference Goals**
Megan Walker, RN

Session Chair: Megan Walker, RN

- 8:00 – 8:20 **The Latest in CRC Screening and Surveillance**
Monica Johnson, RN
8:20 – 8:40 **Tips and Tricks for the Perfect Colon Prep**
Margo Dunlap, BSN, RN
8:40 – 9:00 **Advancements in Therapeutic Endoscopy**
Margaret Malleis, BSN, RN
9:00 – 9:20 **Managing Endoscopic Complications**
Erinne Overton, BSN, RN and
Brittany Craven, BSN, RN
9:20 – 9:40 **EUS: A Primer**
Erin Brewer, RN
9:40 – 10:00 **Pancreatic Cancer Screening**
Hilary Cosby, RN, CGRN
10:00 – 10:20 Refreshment Break

Session Chair: Megan Walker, RN

- 10:20 – 10:40 **Barrett's Esophagus: What You Need to Know**
Carrie Bauman, RN
10:40 – 11:00 **GERD: Advanced Treatment Options**
Regina Crowell, RN

- 11:00 – 11:20 **Motility Testing: What to Order and When**
Wendy Peng, RN
11:20 – 11:40 **Chronic Constipation**
Angela Chang Chiu, MSN, RN
11:40 – 12:00 **Diarrhea: Solid Advice for Solid Stools**
Talia Jackowitz, RN
12:00 – 1:00 Lunch with the Professors
Session Chair: Megan Walker, RN
1:00 – 1:20 **New and Upcoming Biologics**
Leah Lewis-Garber, RN
1:20 – 1:40 **Preventative Care for Your IBD Patient**
Elisheva Weiser, BSN, RN
1:40 – 2:00 **Nutritional Interventions for Your GI Patient**
Katie Fritch, BSN, RN
2:00 – 2:20 **Liver Transplantation: Is Your Patient a Candidate?**
Lisa Silva, BSN, RN
2:20 – 2:40 **Tracking and Compliance in Your Liver Patient**
Chantay Kangalee, BSN, RN
2:40 – 3:00 **Rectal Cancer Multidisciplinary Coordination**
Tam Warszcynski, MSN, CRNP
3:00 Summary
Adjourn

You will receive an email notification to complete the evaluation form and to attest to the number of hours in attendance. The registration desk will remain open during conference hours.

The Johns Hopkins School of Medicine takes responsibility for the content, quality and scientific integrity of this CME activity.

The schedule is subject to change.

SPEAKERS

Directors

Anthony Kalloo, MD
Eun Ji Shin, MD, PhD

Co-Directors

Richard Burkhart, MD
Mouen Khashab, MD
Mark Lazarev, MD
Vikesh Singh, MD, MSc
Ellen Stein, MD
Megan Walker, RN
Tinsay Woreta, MD, MPH

Johns Hopkins Speakers

Tsion Abdi, MD
Gina Adrales, MD, MPH
Elham Afghani, MD
Chady Atallah, MD
Dilhanna Badurdeen, MBBS
Carrie Bauman, RN
Marshall Bedine, MD
Erin Brewer, RN
Olaya Brewer, MD
Robert Bulat, MD
Katherine Bull-Henry, MD, MBA
Will Burns, MD
Andrew Cameron, MD, PhD
Marcia Canto, MD, MHS
Angela Chang Chiu, MSN, RN
Aline Charabaty, MD
Po-Hung Chen, MD
Reezwana Chowdhury, MD
Hilary Cosby, RN, CGRN
Brittany Craven, BSN, RN
Regina Crowell, RN

Margo Dunlap, BSN, RN
Christopher Fain, MD
Katie Fritch, BSN, RN
Susan Gearhart, MD
Christos Georgiades, MD, PhD
Francis Giardiello, MD
Eduardo Gonzalez-Velez, MD
Ahmet Gurakar, MD
James Hamilton, MD
Jin He, MD
Talia Jackowitz, RN
Monica Johnson, RN
Chantay Kangalee, BSN, RN
Amy Kim, MD
Vivek Kumbhari, MD
Katherine Lamond, MD
Leah Lewis-Garber, RN
Margaret Malleis, BSN, RN
Michael Marohn, DO
Simon Mathews, MD
Joanna Melia, MD
Gerard Mullin, MD
Saowanee Ngamruengphong, MD
Ashish Nimgoankar, MD
Erinne Overton, BSN, RN
Alyssa Parian, MD
Wendy Peng, RN
Natajaran Ravendhran, MD
Florin Selaru, MD
Lisa Silva, BSN, RN
Mark Sulkowski, MD
Brindusa Truta, MD
Hazel Veloso, MD
Tam Warszcynski, MSN, CRNP
Elisheva Weiser, BSN, RN
Shadi Yarandi, MD
Helen Yu, MD

Guest Speakers

Hiroyuki Aihara, MD, PhD, FACG, FASGE
Associate Physician
Division of Gastroenterology,
Hepatology, and Endoscopy
Brigham and Women's Hospital
Assistant Professor of Medicine
Harvard Medical School
Boston, Massachusetts

Baha Moshiree MD, MSc
Director of Motility
Professor of Medicine
Atrium Health-Charlotte
UNC School of Medicine,
Charlotte Campus
Charlotte, North Carolina

Anna Phillips, MD, MS
Assistant Professor of Medicine
Division of Gastroenterology, Hepatology
and Nutrition
University of Pittsburgh Medical Center
Pittsburgh, Pennsylvania

K. Rajender Reddy, MD
Ruimy Family President's Distinguished
Professor of Medicine
Professor of Medicine in Surgery
Director of Hepatology
Director, Viral Hepatitis Center
Medical Director, Liver Transplantation
University of Pennsylvania
Philadelphia, Pennsylvania

Miguel Regueiro, MD
Chair
Department of Gastroenterology,
Hepatology and Nutrition
Cleveland Clinic
Cleveland, Ohio

45TH Annual Topics in Gastroenterology and Hepato-Biliary Update | OCTOBER 2-4, 2019

Register Online: hopkinscme.cloud-cme.com/default.aspx?P=5&EID=18537

Fax: (866) 510-7088 Phone: (410) 502-9636

Or mail this form to the Johns Hopkins University, Office of Continuing Medical Education,
720 Rutland Avenue, Room 20, Baltimore, Maryland 21205-2195.

Include e-check or credit card information below.

FULL PAYMENT IS REQUIRED PRIOR TO THE START OF ACTIVITY.

I am a Johns Hopkins speaker for this activity.

Please type or print clearly:

Last Name		First Name		MI
Highest Degree	Primary Specialty		Hopkins faculty/staff only JHED ID	
For Physicians Only: NPI – 10 digits			State License #	State of License
ABIM#		Birth Month	Birth Day	
<input type="checkbox"/> I provide permission for my MOC completion information to be shared and transmitted to the Accreditation Council for Continuing Medical Education (ACCME).				
Organization		Mailing Address		
City		State	ZIP + 4 code	Country
Daytime Telephone		Fax Number		
e-mail (required)				

Check here if you wish to receive e-mail and/or fax notices about upcoming CME activities.

I plan to stay at the Marriott Residence Inn at the Johns Hopkins Medical Campus.

What do you hope to learn by attending this activity? _____

Please notify us if you have any special needs. _____

REGISTRATION FEES:

- Physicians.....\$550
- Residents*/Fellows*/Nurses/NPs/PAs/Allied Health Professionals.....\$125
*with verification of status
- Nursing Track (Thursday) Only (NPs/RNs)\$ No Charge

The registration fee includes instructional materials and food and beverage. For registrations received after 5:00 p.m. ET on **September 26, 2019**, include a \$50 late fee. On-site registrations are payable only by credit card.

Total amount \$ _____

Payment Type:

JHU Faculty/Staff Only: If you are using your Tuition Remission Benefit or an ION budget, please upload your fully completed and approved form in the payment section of the online activity link above.

TR Form: benefits.jhu.edu/documents/trffacandstaff.pdf

ION Form: hopkinscme.edu/migration/IonRequest.pdf

e-Check: Routing Number: _____ Account Number: _____

Credit Card: VISA MASTERCARD DISCOVER AMEX

Card # _____ Exp. Date _____

Billing Zip Code _____ Security Code _____

Name on Card

Signature and Date