

*The Division of
Pulmonary and Critical Care Medicine
presents*

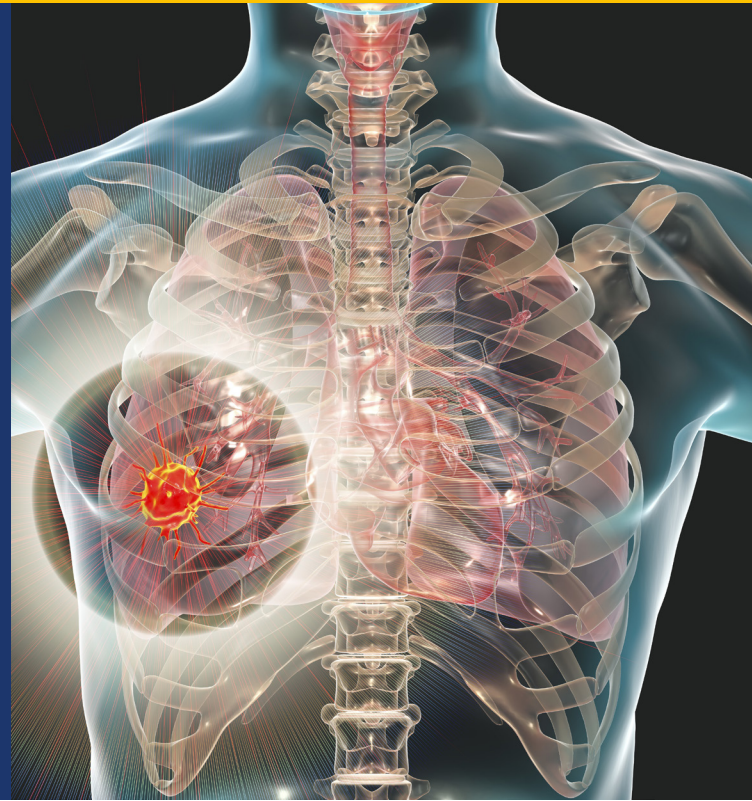
Updates in Lung Cancer, Immunotherapy, and Immune-related Toxicity: The Fourth Year

May 6-7, 2019

Albert H. Owens Auditorium
David H. Koch Cancer Research Building
Sidney Kimmel Comprehensive
Cancer Center at Johns Hopkins
Baltimore, Maryland



This activity has been approved for AMA PRA Category I Credits™.



JOHNS HOPKINS
MEDICINE

DESCRIPTION

A cutting edge two day educational symposium focused on advances in lung cancer screening, diagnosis, therapies and the management of immune related toxicities.

Day one of the conference will highlight the recent advances in lung cancer screening, diagnostics and treatment. Day two will be presented as a master class focusing on organ specific immunotherapy related adverse events and their management, in order to aid the practicing clinician in their management of immunotherapy and irAE.

WHO SHOULD ATTEND

This activity is intended for physicians with specialties in pulmonary and critical care, internal medicine, family medicine, thoracic surgery, medical oncology, radiation oncology, pathology, nurses, nurse practitioners, physician assistants, respiratory therapists, physician trainees, students, residents, and fellows.

OBJECTIVES

After attending this activity, the participant will demonstrate the ability to:

- Describe the appropriate selection of diagnostic modalities in the work-up of a patient with suspected lung cancer.
- Identify and describe updates and advances in chemotherapy treatment for patients with advanced lung cancer.
- Discuss new advances in immunotherapy in the treatment of lung cancer.
- Identify and describe organ specific immunotherapy related adverse events as well as their management.
- Evaluate patients with malignant airway obstruction, mediastinal/hilar lymph adenopathy and peripheral lung lesions.
- Evaluate patients with newly diagnosed lung nodules.
- Discuss novel non-invasive detection of lung cancer.
- Discuss the side effects associated with new chemotherapeutic agents and their management.

LOCATION

Albert H. Owens Auditorium
David H. Koch Cancer Research Building
Sidney Kimmel Comprehensive Cancer Center at Johns Hopkins
1650 E. Jefferson Street
Baltimore, Maryland 21287

ACCREDITATION STATEMENT

The Johns Hopkins University School of Medicine is accredited by the Accreditation Council for Continuing Medical Education (ACCME) to provide continuing medical education for physicians.



CREDIT DESIGNATION STATEMENT

The Johns Hopkins University School of Medicine designates this live activity for a maximum of 14 AMA PRA Category 1 Credits™. Physicians should claim only the credit commensurate with the extent of their participation in the activity.

POLICY ON SPEAKER AND PROVIDER DISCLOSURE

It is the policy of the Johns Hopkins University School of Medicine that the speaker and provider globally disclose conflicts of interest. The Johns Hopkins University School of Medicine OCME has established policies that will identify and resolve conflicts of interest prior to this educational activity. Detailed disclosure will be made prior to presentation of the education.

TO REGISTER AND FOR FURTHER INFORMATION

hopkinscme.cloud-cme.com/aph.aspx?P=5&EID=18408

Register by Phone	(410) 502-9636
Register by Fax	(866) 510-7086
Confirmation/Certificates/Transcripts	(410) 502-9636
General Information	(410) 955-2959
E-mail the Office of CME	cmenet@jhmi.edu
Follow us on Twitter:	twitter.com/HopkinsCME
Facebook:	facebook.com/HopkinsCME

CloudCME 

Check out our mobile app CloudCME.
Organization Code: HopkinsCME

For website and CloudCME mobile app technical difficulties,
email: cmetechnsupport@jhmi.edu.