



Johns Hopkins University  
School of Medicine  
Division of Gastroenterology  
and Hepatology  
and The Institute for  
Johns Hopkins Nursing  
present

Third Annual

# HITEC 2019

## Hopkins International Therapeutic Endoscopy Course

### April 3–5, 2019

The Johns Hopkins Hospital and  
Johns Hopkins University School of Medicine  
Thomas B. Turner Building  
Baltimore, Maryland, USA

- Lectures, **live demonstrations** and **hands-on training**
- Superstar national and international **expert faculty**
- Basic, advanced and **cutting edge** endoscopic procedures and techniques
- **Latest breakthroughs** in endoscopic equipment and accessories
- **Direct interaction** with Johns Hopkins and visiting faculty
- Optional Half-day hands-on lab session with professional training models
- **Interactive video sessions** with commentary from the experts
- **Spanish interpretation** will be available on-site

<https://www.hitec-course.com>

**DIRECTOR:**

Mouen Khashab, MD

**CO-DIRECTOR:**

Vivek Kumbhari, MD

**CO-DIRECTOR:**

Mary Rose R. Hess, BSN, RN, CGRN, NCCII

Endorsed by:



American College of Gastroenterology



The American Gastroenterological Association



American Society for Gastrointestinal Endoscopy



Brazilian Society of Digestive Endoscopy



International Federation for the Surgery of Obesity and Metabolic Disorders



The European Society of Gastrointestinal Endoscopy

SGNA Society of Gastroenterology Nurses and Associates



Interamerican Society for Digestive Endoscopy



World Endoscopy Organization



JOHNS HOPKINS  
NURSING



JOHNS HOPKINS  
MEDICINE

## DESCRIPTION

The Johns Hopkins International Therapeutic Endoscopy Course (HITEC) is an intense 2-3 day course dedicated to providing the practicing endoscopist state-of-the-art updates in luminal, pancreaticobiliary and bariatric endoscopy. In addition to extensive live endoscopy demonstrations and keynote lectures by superstar national and international faculty, our unique format will include faculty led lunch time symposia focusing on the various aspects of therapeutic endoscopy as well as video sessions that encourage opportunities to demonstrate rare cases not typically performed during live courses in the U.S. The pancreaticobiliary endoscopy sessions will illustrate basic and advanced principles and techniques of EUS/ERCP, cholangiopancreatography and interventional EUS. The luminal endoscopy sessions will focus on techniques such as Barrett's endoscopic therapy, EMR, ESD, POEM and EUS-guided anastomosis creation. The bariatric endoscopy sessions will demonstrate primary endoscopic therapies, as well as novel techniques to manage the complications of bariatric surgery. Therapeutic endoscopy hands-on training labs are offered with training performed by world-renowned experts. In short, this unique course featuring superstar global endoscopists will ensure detailed and comprehensive illustration of optimal techniques to enhance endoscopic skills, while simultaneously introducing advanced and novel procedures/techniques to endoscopists.

## WHO SHOULD ATTEND

This activity is intended for endoscopists, gastroenterologists, surgeons, gastroenterology/surgical fellows, endoscopy nurses and endoscopy technicians.

## OBJECTIVES

After attending this activity, the participant will demonstrate the ability to:

- Discuss the latest advances in luminal and pancreaticobiliary endoscopy.
- Present an update on optimal techniques for biliary cannulation.
- Discuss different management options for patients with complex colon polyps.
- Present an update on POEM and other treatment options for patients with achalasia.
- Discuss different management options for patients with pancreatic necrosis.
- Present an update on the endoscopic management of pancreatic cysts.
- Discuss a variety of bariatric endoscopic techniques, including primary weight loss therapies as well as those to treat the complications of bariatric surgery.
- Illustrate techniques and indications for endoscopic suturing.

## ACCREDITATION STATEMENT

This activity has been planned and implemented in accordance with the accreditation requirements and policies of the Accreditation Council for Continuing Medical Education (ACCME) through the joint providership of Johns Hopkins University School of Medicine and The Institute for Johns Hopkins Nursing. The Johns Hopkins University School of Medicine is accredited by the ACCME to provide continuing medical education for physicians. The Institute for Johns Hopkins Nursing is accredited as a provider of continuing nursing education by the American Nurses Credentialing Center's Commission on Accreditation.



## CREDIT DESIGNATION STATEMENT

The Johns Hopkins University School of Medicine designates this live activity for a maximum of 27.75 *AMA PRA Category 1 Credits*<sup>™</sup>. Physicians should claim only the credit commensurate with the extent of their participation in the activity.

## OTHER CREDITS

**American Academy of Nurse Practitioners National Certification Program** accepts *AMA PRA Category 1 Credit*<sup>™</sup> from organizations accredited by the ACCME.

PAs may claim a maximum of 27.75 Category 1 credits for completing this activity. **NCCPA** accepts *AMA PRA Category 1 Credit*<sup>™</sup> from organizations accredited by ACCME or a recognized state medical society.

The Johns Hopkins University has approved this activity for **27.75 contact hours for non-physicians**.

This 27.75 contact hour educational activity is jointly provided with **The Institute for Johns Hopkins Nursing**.

Continuing Medical Education credit is being requested from another applicable medical specialty organization.

## MOC STATEMENT

Successful completion of this CME activity, which includes participation in the evaluation component, enables the participant to earn up to 27.75 MOC points in the American Board of Internal Medicine's (ABIM) Maintenance of Certification (MOC) program. Participants will earn MOC points equivalent to the amount of CME credits claimed for the activity. It is the CME activity provider's responsibility to submit participant completion information to ACCME for the purpose of granting ABIM MOC credit.



# GENERAL INFORMATION

## REGISTRATION

**April 3, 2019 • 7:00 – 7:30 a.m.**

The registration desk will remain open for the duration of the activity.

## LOCATION

### Thomas B. Turner Building

Lower Level  
Johns Hopkins University School of Medicine  
720 Rutland Avenue  
Baltimore, Maryland 21205

The Turner Building is located on Rutland Avenue at Monument Street. Directions and campus parking information are available on our website under the contact us tab at <https://HopkinsCME.cloud-cme.com>. Handicapped parking is available in the nearby Rutland Garage. *Johns Hopkins is smoke-free.*

## TRAVEL INFORMATION

**By Air:** Baltimore is served by three major airports: Baltimore/Washington International Airport (BWI) in Maryland; Washington Dulles International Airport (IAD) and Ronald Reagan National Airport (DCA) in Northern Virginia.

**Taxi Service:** To downtown Baltimore from BWI, the nearest airport, is 15-30 minutes depending on traffic and approximately \$35 one way. Super Shuttle charges less than \$20 one way and reservations are needed. Reservations can be made online at: [www.supershuttle.com](http://www.supershuttle.com) or call +1 (410) 859-3427.

**By Rail:** Baltimore is easily accessible by train. Amtrak trains run 24 hours a day, 7 days a week. Baltimore is a major stop for Amtrak's high-speed Acela Express service. Penn Station is easily accessible by I-95, I-83 and I-70 and is a 15 minute taxi ride to Johns Hopkins. For more information visit [www.amtrak.com](http://www.amtrak.com) or call +1 (800) USA-RAIL.

## HOTEL ACCOMMODATIONS

A limited block of sleeping rooms has been reserved at the hotel for your convenience and will be available on a first come, first served basis.

**Residence Inn Baltimore** +1 (443) 524-8400  
**at the Johns Hopkins Medical Campus**  
800 North Wolfe Street Baltimore  
Maryland 21205  
Website: [www.marriott.com](http://www.marriott.com)

### Hotel Reservation Cut-Off Date: March 12, 2019

The Residence Inn Baltimore is located on the Johns Hopkins Medical Campus. Make your reservation at <https://tinyurl.com/yabb77tg> or call the hotel directly and specify that you are attending the Johns Hopkins HITEC Conference to receive the special group rate of \$139 for one bedroom king suite, plus tax. On-site valet parking is available at the hotel at an additional charge. Check-in time is 4:00 p.m. Check-out time is 12:00 p.m. This hotel is located directly across the street to the meeting site, within walking distance.

## COMPLIMENTARY SOCIAL EVENT

Please join us for an opportunity of networking during the complimentary welcome reception and dinner for registrants and faculty on Wednesday evening, April 3, 2019, immediately following the last session. Please indicate your attendance on the registration form. NOTE: The commercial support received is solely for the educational component of this activity and will not be used to support this social event.

## SYLLABUS

The syllabus will be accessible online and via your mobile device in the CME CloudCME App prior to the activity.

## FEES

Register online at:

<https://hopkinscme.cloud-cme.com/aph.aspx?P=5&EID=15249>

**Methods of Payment:** We require full payment prior to the start of the activity. On-site payments by credit card only. The registration fee includes instructional materials, continental breakfasts, refreshment breaks and lunches.

Physicians .....	\$550
Residents*/Fellows* .....	\$250
*with verification of status	
CRNA/NP/PA.....	\$250
Nursing Track on 4/5	
<i>(includes free general session admission on 4/3&amp;4).....</i>	
<b>Optional (limited to registered attendees; choose one)</b>	
Therapeutic Endoscopy Hands-On Modules.....	\$250

Endorsement society member discounts are available with online registration.

You will receive a confirmation by e-mail. If you have not received it by **March 29, 2019**, call +1 (410) 502-9636 to confirm that you are registered. A transcript of attendance will be available upon attestation of your credit hours and submission of the post activity online evaluation.

The Johns Hopkins University reserves the right to cancel or postpone any activity due to unforeseen circumstances. In this event, the University will refund the registration fee but is not responsible for travel expenses. Additionally, we reserve the right to change the venue to a comparable venue. Under such circumstances, registrants will be notified as soon as possible.

## LATE FEE AND REFUND POLICY

A \$50 late fee applies to registrations received after 5:00 p.m. ET on **March 29, 2019**. A handling fee of \$50 will be deducted for cancellation. An additional fee may apply for cancellation of other events, including workshops and social activities. Refund requests must be received by fax or mail by March 29, 2019. No refunds will be made thereafter. Transfer of registration to another Johns Hopkins activity in lieu of cancellation is not possible.

## HANDS-ON TRAINING LABS

On Friday, April 5, 2019, registrants will have the option of attending an endoscopy hands-on module in the state-of-the-art MISTIC lab of The Johns Hopkins Hospital. Each module is limited to 24 participants. Sessions will be held on explants and training models with training provided by national and international expert endoscopists. Pre-registration is required (has fee) and space is limited. There will be two options (morning and afternoon) each with a slightly different focus. Both modules will include endoscopic suturing, endoscopic submucosal dissection and interventional EUS. Each participant will rotate through each station (40 minutes each) with a maximum of four participants per station. Please register early, as these limited sessions will fill up quickly. Further specifics are provided in the detailed program.

## HOW TO OBTAIN CREDIT

Post activity, an online evaluation will be available to attendees to evaluate the activity and individual presentations and to identify future educational needs. Upon completion of the evaluation, the learner must attest to the number of hours in attendance. Credits earned will be added to the learner's transcript and immediately available for print. **The last day to access the evaluation and attest to your credits is May 20, 2019.**

An outcome survey will be sent to all physician attendees within two months post activity to assist us in determining what impact this activity had on the learner's practice.

## EMERGENCY CALLS

On **April 3-5, 2019**, direct emergency calls to the Hopkins registration desk, +1 (410) 955-3673. Messages will be posted for participants.

## AMERICANS WITH DISABILITIES ACT

The Johns Hopkins University School of Medicine and The Institute for Johns Hopkins Nursing fully comply with the legal requirements of the ADA and the rules and regulations thereof. *Please notify us if you have any special needs.*

## Policy on Speaker and Provider Disclosure

It is the policy of the Johns Hopkins University School of Medicine that the speaker and provider globally disclose conflicts of interest. The Johns Hopkins University School of Medicine OCME has established policies in place that will identify and resolve conflicts of interest prior to this educational activity. Detailed disclosure will be made prior to presentation of the education.

## ACKNOWLEDGEMENT

Applications for commercial support from health care related industries are pending. A complete list of contributors will be provided in the syllabus. Please note that commercial support received is solely for the educational component of the activity and will not be used to provide food and beverage.

*Please note:* The Physician Payments Sunshine Act was enacted by Congress to increase public awareness of financial relationships between drug and medical device manufacturers and physicians. In compliance with the requirements of this Act, the commercial supporter/s of this activity may require the Johns Hopkins University School of Medicine to report certain professional information (such as name, address, National Provider Identifier (NPI), and State License number) of physician attendees who receive complimentary food and beverage in conjunction with a CME activity. The commercial supporter is required to submit the collected data to the Centers for Medicare and Medicaid Services which will then publish the data on its website.

## TO REGISTER OR FOR FURTHER INFORMATION

Register Online.....	<a href="https://hopkinscme.cloud-cme.com/aph.aspx?P=5&amp;EID=15249">https://hopkinscme.cloud-cme.com/aph.aspx?P=5&amp;EID=15249</a>
Register by Phone.....	+1 (410) 502-9636
Register by Fax.....	+1 (866) 510-7088
Confirmation/Certificates/Transcripts.....	+1 (410) 502-9636
General Information.....	+1 (410) 955-2959
E-mail the Office of CME.....	<a href="mailto:cmenet@jhmi.edu">cmenet@jhmi.edu</a>

<http://twitter.com/HopkinsCME>

<http://www.facebook.com/HopkinsCME>

For general information, please visit the activity webpage at

<https://www.hitec-course.com>



Check out our mobile app CloudCME.

Organization Code: **HopkinsCME**

For website and CloudCME app technical difficulties, email: [cmetechnsupport@jhmi.edu](mailto:cmetechnsupport@jhmi.edu)

# PROGRAM

## DAY 1: WEDNESDAY, APRIL 3, 2019

**Spanish Translation  
Now Available!**

7:00 – 7:30 Registration and Continental Breakfast

7:30 – 7:40 **Opening Remarks and Conference Goals**

Mouen Khashab, MD and Vivek Kumbhari, MD

7:40 – 8:00 **Is POEM the New Gold Standard for Achalasia?**

Thomas Rösch, MD

8:00 – 8:20 **Endoscopic Management of Ampullary Neoplasia**

Paul Fockens, MD, PhD

8:20 – 10:00 **Live Endoscopy**

10:00 – 10:20 Refreshment Break and Exhibits

10:20 – 10:40 **My Top 5 Tricks for Performing Complex Colon Polypectomy**

Douglas Rex, MD, MACP, MACG, FASGE, AGAF

10:40 – 12:00 **Live Endoscopy**

12:00 – 1:00 **Lunch Time Symposia**

### Procedure

FTRD  
POEM  
Suturing  
TIF  
ESD  
FNB  
Bariatric Endoscopy  
EUS-Guided Drainage  
Barrett's Therapies  
Cholangiopancreatography

### Expert

Robert Moran, MD  
Thomas Rösch, MD  
Reem Sharaiha, MD, MSc  
Greg Haber, MD, FRCPC, FACG  
Naohisa Yahagi, MD, PhD  
Luis Carlos Sabbagh, MD, FASGE  
Barham Abu Dayyeh, MD, MPH  
Paul Fockens, MD, PhD  
Marcia Canto, MD, MHS  
Robert Hawes, MD, FACG

### Industry

Ovesco  
Olympus/Medtronic/ERBE  
Apollo  
EGS  
BSCI/ERBE/Olympus  
BSCI/Medtronic  
Apollo/Medtronic  
BSCI  
Pentax/ERBE/Medtronic  
BSCI

1:00 – 1:20 **The Art of Biliary Cannulation During ERCP**

Greg Haber, MD, FRCPC, FACG

1:20 – 1:40 **Taking ESD to the Colon: How I Do It?**

Naohisa Yahagi, MD, PhD

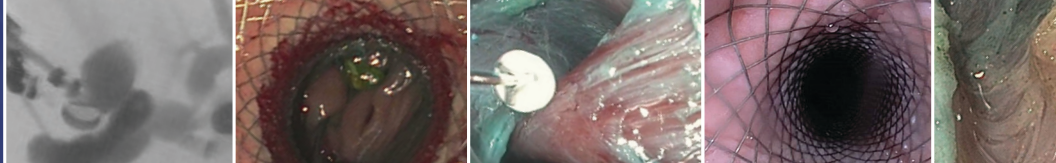
1:40 – 2:00 **Deciphering Guidelines for the Management of Pancreatic Cysts**

Luis Carlos Sabbagh, MD, FASGE

2:00 – 4:00 **Live Endoscopy**

4:00 – 4:30 Refreshment Break and Exhibits

4:30 – 5:30 **At the Movies**

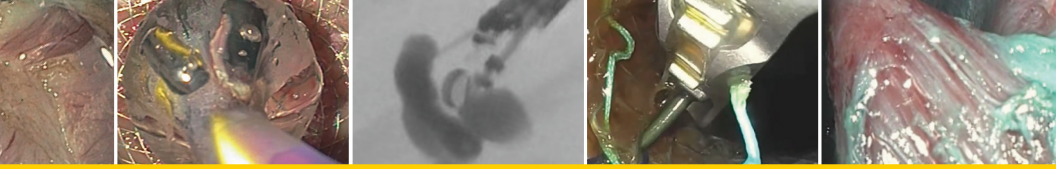


## DAY 2: THURSDAY, APRIL 4, 2019

- 7:00 – 7:40 **The Breakfast Debate:  
Management of Moderate Obesity (BMI 30-40 kg/m<sup>2</sup>)**  
**Moderators:** *Michael Schweitzer, MD and Reem Sharaiha, MD, MSc*  
*Katherine Lamond, MD: Definitely Surgery (15 min)*  
*Barham Abu Dayyeh, MD, MPH: Definitely Endoscopy (15 min)*
- 7:40 – 8:00 **Multidisciplinary Approach to the Management of Pancreatic Necrosis**  
 Robert Hawes, MD, FACC
- 8:00 – 9:40 **Live Endoscopy**
- 9:40 – 10:00 Refreshment Break and Exhibits
- 10:00 – 10:20 **Endoscopic Suturing: Techniques and Indications**  
 Reem Sharaiha, MD, MSc
- 10:20 – 12:00 **Live Endoscopy**
- 12:00 – 1:00 **Lunch Time Symposia**
- | <b>Procedure</b>         | <b>Expert</b>                  | <b>Industry</b>        |
|--------------------------|--------------------------------|------------------------|
| FTRD                     | Robert Moran, MD               | Ovesco                 |
| POEM                     | Thomas Rösch, MD               | Olympus/Medtronic/ERBE |
| Suturing                 | Reem Sharaiha, MD, MSc         | Apollo                 |
| TIF                      | Greg Haber, MD, FRCPC, FACC    | EGS                    |
| ESD                      | Naohisa Yahagi, MD, PhD        | BSCI/ERBE/Olympus      |
| FNB                      | Luis Carlos Sabbagh, MD, FASGE | BSCI/Medtronic         |
| Bariatric Endoscopy      | Barham Abu Dayyeh, MD, MPH     | Apollo/Medtronic       |
| EUS-Guided Drainage      | Paul Fockens, MD, PhD          | BSCI                   |
| Barrett's Therapies      | Marcia Canto, MD, MHS          | Pentax/ERBE/Medtronic  |
| Cholangiopancreatography | Robert Hawes, MD, FACC         | BSCI                   |
- 1:00 – 1:20 **How Do I Get my ADR to 60%?**  
 Douglas Rex, MD, MACP, MACG, FASGE, AGAF
- 1:20 – 3:00 **Live Endoscopy**
- 3:00 – 3:20 Refreshment Break and Exhibits
- 3:20 – 4:30 **Live Endoscopy**
- 4:30 – 5:30 **At the Movies**

*The Johns Hopkins University School of Medicine and The Institute for Johns Hopkins Nursing take responsibility for the content, quality and scientific integrity of this CME activity.*

*This schedule is subject to change.*



## **DAY 3: FRIDAY, APRIL 5, 2019**

### **Hands-On Training**

**Location:** MISTIC Lab

*4 people per station. 40 minutes at each station. 30 minute break*

#### **Option 1: Endoscopy Hands-On Module (7:30 a.m. - 12:00 p.m.)**

**Station 1:** Endoscopic Suturing

**Station 2:** ESD (standard)

**Station 3:** ESD (ORISE)

**Station 4:** ERCP with Cholangiopancreatography

**Station 5:** Interventional EUS

**Station 6:** Full Thickness Resection

#### **Option 2: Endoscopy Hands-On Module (1:00 - 5:30 p.m.)**

**Station 1:** Endoscopic Suturing

**Station 2:** ESD (Standard)

**Station 3:** ESD (ORISE)

**Station 4:** Closure and Hemostasis

**Station 5:** Zenker's Diverticulotomy

**Station 6:** Lumen-apposing Metal Stents

*Professional models are provided by ENDOSIM.*

Adjourn

You will receive an email notification to complete the evaluation form and to attest to the number of hours in attendance.

The registration desk will remain open during conference hours.

## **NURSING TRACK**

Due to the rise of innovative procedures, endoscopy units require regular introduction and practice to new therapeutic equipment and supplies. A successful advanced therapeutic procedure would not be possible without a fully trained nurse and clinical technician to assist the provider.

The **HITEC Nursing Track** will enable registrants to develop and maintain competency in the ever-changing field of endoscopy and will illustrate an array of emerging therapeutic endoscopic procedures. Nurses will gain knowledge and hands-on skills necessary to set-up and assist in advanced therapeutic procedures. Registration details and the full nursing track agenda are available online.



Catherine Bauer, MSN MBA CGRN CFER  
President, SGNA



27.75 CE Credits || SGNA Member 25% Discount: Use promo code **HN25**

Registration includes access to the general session on April 3 & 4, as well as the Nursing Track on April 5.

<https://www.hitec-course.com>

## SPEAKERS

### ACTIVITY DIRECTOR



**Mounen Khashab, MD**  
Associate Professor of Medicine  
Director, Therapeutic Endoscopy  
Johns Hopkins University School of Medicine

### JOHNS HOPKINS SPEAKERS



**Haitham Algrain, MD, FASA**  
Assistant Professor of Anesthesiology  
and Critical Care Medicine



**Firas Al-Kawas, MD**  
Professor of Medicine  
Director of Endoscopy  
Sibley Memorial Hospital



**Marcia Canto, MD, MHS**  
Professor of Medicine and Oncology  
Director of Clinical Research



**Olaya Brewer Gutierrez, MD**  
Advanced Endoscopy Fellow  
Division of Gastroenterology and Hepatology



**Anthony Kalloo, MD**  
The Moses and Helen Golden Paulsen  
Professor of Medicine  
Director, Division of Gastroenterology and Hepatology



**Katherine Lamond, MD**  
Assistant Professor of Surgery  
Sibley Memorial Hospital



**Anne Marie Lennon, MD, PhD**  
Associate Professor of Medicine, Surgery, Radiology  
and Radiological Science, and Oncology  
Clinical Director of Gastroenterology  
Director, Multidisciplinary Pancreatic Cyst Program

### INVITED GLOBAL SPEAKERS



**Barham Abu Dayyeh, MD, MPH (USA)**  
Associate Professor of Medicine  
Mayo Clinic College of Medicine  
Director of Bariatric and Metabolic Endoscopy  
Mayo Clinic  
Rochester, Minnesota



**Paul Fockens, MD, PhD (Netherlands)**  
Professor and Chairman  
Department of Gastroenterology and Hepatology  
Academic Medical Center  
University of Amsterdam  
The Netherlands



**Greg Haber, MD, FRCPC, FACG (USA)**  
Chief of Endoscopy  
Director of Advanced Therapeutics and Innovation  
Division of Gastroenterology  
NYU Langone Medical Center  
New York, New York



**Robert Hawes, MD, FACG (USA)**  
Center for Interventional Endoscopy  
Medical Director  
Florida Hospital Institute for Minimally Invasive Therapy  
Professor of Medicine  
University of Central Florida College of Medicine  
Orlando, Florida



**Robert Moran, MD (USA)**  
Assistant Professor of Medicine  
Division of Gastroenterology and Hepatology Medical  
University of South Carolina Charleston, South Carolina



**Douglas Rex, MD, MACP, MACG,  
FASGE, AGAF (USA)**  
Distinguished Professor of Medicine  
Chancellor's Professor at Indiana University  
Purdue University Indianapolis  
Director of Endoscopy  
Indiana University Hospital  
Indianapolis, Indiana

### ACTIVITY CO-DIRECTORS



**Vivek Kumbhari, MD**  
Assistant Professor of Medicine  
Director of Bariatric Endoscopy  
Johns Hopkins University School of Medicine



**Mary Rose Hess, BSN, RN, CGRN, NCIII**  
Nurse Product Procedure Group, Chair  
Advanced Therapeutic Nurse  
The Johns Hopkins Hospital



**Zahra Maleki, MD, FCAP, MIAC**  
Associate Professor of Pathology



**Saowanee Ngamruengphong, MD**  
Assistant Professor of Medicine



**Eun Ji Shin, MD, PhD**  
Associate Professor of Medicine



**Vikesh Singh, MD, MSc**  
Associate Professor of Medicine  
Director of Endoscopy  
Director of Pancreatitis Center  
Medical Director of Pancreatic Islet Cell  
Autotransplantation Program



**Michael Schweitzer, MD**  
Associate Professor of Surgery  
Director of Bariatric Surgery  
Johns Hopkins Bayview Medical Center



**Juliana Yang, MD**  
Advanced Endoscopy Fellow  
Division of Gastroenterology and Hepatology



**Thomas Rösch, MD (Germany)**  
Professor of Medicine  
Director of the Department  
Chief Physician  
Medical Specialist in Internal Medicine and Gastroenterology  
University Medical Center Hamburg- Eppendorf | UKE  
Department for Interdisciplinary Endoscopy  
Hamburg Germany



**Luis Carlos Sabbagh, MD, FASGE (Colombia)**  
Chief of the Department of Gastroenterology  
Reina Sofia Clinic and Colombia Clinic  
Associate Professor of Gastroenterology and  
Digestive Endoscopy  
Director of the World Gastroenterology Organization (WGO)  
Bogota Training Center  
Director of Postgraduate Program on Gastroenterology Sanitas  
University Foundation  
Bogota, Colombia



**Reem Sharaiha, MD, MSc (USA)**  
Assistant Professor of Medicine  
Director of Bariatric Endoscopy  
Associate Director of the Pancreas Program  
Weill Cornell Medicine  
New York, New York



**Naohisa Yahagi, MD, PhD (Japan)**  
Professor of Medicine  
Director, Division of Research and Development for  
Minimally Invasive Treatment  
Cancer Center  
Keio University  
Tokyo, Japan



**REGISTRATION FORM**

COURSE NUMBER 80047720 / 15249

**THIRD ANNUAL HITEC: HOPKINS INTERNATIONAL THERAPEUTIC ENDOSCOPY COURSE****APRIL 3 – 5, 2019** • <https://www.hitec-course.com>**TO REGISTER:****Online:** <https://hopkinscme.cloud-cme.com/aph.aspx?P=5&EID=15249>**Fax:** (866) 510-7088**Phone:** (410) 502-9636

Or mail this form to the Johns Hopkins University, Office of Continuing Medical Education, 720 Rutland Avenue, Turner Room 20, Baltimore, Maryland 21205-2195. Include e-check or credit card information below.

**FULL PAYMENT IS REQUIRED PRIOR TO THE START OF ACTIVITY.** I am a Johns Hopkins speaker for this activity.

Please type or print clearly:

Last Name		First Name		MI
Highest Degree	Primary Specialty		Hopkins Faculty/Staff only JHED ID	
For Physicians Only: NPI 10 digits		State of License #		State of License
ABIM #:			Birth Month:	Birth Day:
[ ] I provide permission for my MOC completion information to be shared and transmitted to the Accreditation Council for Continuing Medical Education (ACCME).				
Organization		Mailing Address:		
City	State	Zip + 4 Code	Country	
Daytime Telephone		Fax Number		
Email (required)				

 Check here if you wish to receive e-mail notices about upcoming CME activities. I plan to stay at the Residence Inn Baltimore Marriott located on the Johns Hopkins Medical Institutions campus. Spanish Translation Requested

What do you hope to learn by attending this activity? \_\_\_\_\_

Please notify us if you have any special needs. \_\_\_\_\_

**Complimentary Welcome Reception and Dinner:**Wednesday, April 3, 2019:  I will attend I will not attend. I will bring one guest.**Registration Fees:** Physicians..... \$550 Residents\*/Fellows\*..... \$250  
\*with verification of status CRNA/NP/PA ..... \$250 Nursing Track 4/5 (include general session 4/3&4) ..... \$200**Optional (limited to registered attendees)** Therapeutic Endoscopy Hands-On Module (Friday Choose One:  Morning or  Afternoon) ..... \$250The registration fee includes instructional materials and food and beverage. For registrations received after 5:00 p.m. ET on **March 29, 2019**, include a \$50 late fee. On-site registrations are payable only by credit card.

Endorsement society member discounts are available with online registration.

Total amount \$ \_\_\_\_\_

**Payment Type:****JHU Faculty/Staff Only:** If you are using your Tuition Remission Benefit or an ION budget, please upload your fully completed and approved form in the payment section of the online activity link above. TR Form: <http://benefits.jhu.edu/documents/trffacandstaff.pdf> ION Form: <http://hopkinscme.edu/migration/ionRequest.pdf> **e-Check:** Routing #: \_\_\_\_\_ Account #: \_\_\_\_\_ **Credit Card:**  VISA  MASTERCARD  DISCOVER  AMEX

Card # \_\_\_\_\_ - \_\_\_\_\_ - \_\_\_\_\_ - \_\_\_\_\_ Exp. Date \_\_\_\_\_

Billing Zip Code \_\_\_\_\_ Security Code \_\_\_\_\_

Name on Card

Signature and Date



**JOHNS HOPKINS**  
M E D I C I N E

**Office of Continuing Medical Education**  
720 Rutland Avenue / Turner 20  
Baltimore, Maryland 21205-2195



**April 3-5, 2019**

<https://www.hitec-course.com>

Spanish interpretation will be available onsite.



**CloudCME**

Check out our mobile app CloudCME.  
Organization Code: **HopkinsCME**

Nonprofit Org.  
U.S. Postage  
PAID  
Bellmawr NJ  
Permit No. 2134

Dated Material