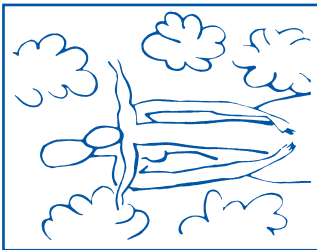


**The Spectrum of  
Developmental Disabilities XLI:**

**Disorders of Higher Cortical Function in School:  
Learning, Attention, and Socialization**



March 18–20, 2019  
Johns Hopkins University  
School of Medicine  
Baltimore, Maryland



**CloudCME**

Check out our mobile app CloudCME.  
Organization Code: **HopkinsCME**

<https://hopkinscme.cloud-cme.com/aph.aspx?P=5&EID=15343>

Non-Profit Org.  
U.S. Postage  
PAID  
Bellmawr, NJ  
Permit No. 2134

**GENERAL INFORMATION**

**DESCRIPTION**

This multidisciplinary, three-day conference will focus on cognitive dysfunction in school-age children.

**WHO SHOULD ATTEND**

This activity is intended for pediatricians, neurodevelopmentalists, developmental behavioral pediatricians, child neurologists, child psychiatrists, educators, nurses, nurse practitioners, occupational therapists, psychologists, speech language pathologists, physical therapists, physician assistants and social workers.

**OBJECTIVES**

After attending this activity, the participant will demonstrate the ability to:

- Identify children who are likely to need special education.
- Identify appropriate evaluations and services for children with academic challenges.
- Counsel children and families regarding their educational rights under US law.
- Critically evaluate an educational plan and recommend adjustments when necessary.

**ACCREDITATION STATEMENT**

This activity has been planned and implemented in accordance with the accreditation requirements and policies of the Accreditation Council for Continuing Medical Education (ACCME) through the joint providership of Johns Hopkins University School of Medicine and Kennedy Fellows Association. The Johns Hopkins University School of Medicine is accredited by the ACCME to provide continuing medical education for physicians.

**CREDIT DESIGNATION STATEMENT**

The Johns Hopkins University School of Medicine designates this live activity for a maximum of 18.25 *AMA PRA Category 1 Credits™*. Physicians should claim only the credit commensurate with the extent of their participation in the activity.

**MAINTENANCE OF CERTIFICATION**

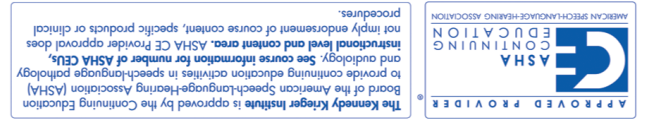
The American Board of Psychiatry and Neurology has reviewed The Spectrum of Developmental Disabilities XLI: Disorders of Higher Cortical Function in School: Learning, Attention, and Socialization and has approved this program as a necessary self-assessment component of Maintenance of Certification.

**American Board of Pediatrics (ABP)**

Completion of this activity and associated assessment enables the participant to earn 18.25 ABP MOC Part 2 points.

**OTHER CREDIT**

This program is offered for 1.8 ASHA CEUs (Various level; Professional area)



**American Nurses Credentialing Center (ANCC)** accepts *AMA PRA Category 1 Credits™* from organizations accredited by the ACCME.  
**American Academy of Nurse Practitioners National Certification Program** accepts *AMA PRA Category 1 Credits™* from organizations accredited by the ACCME.  
**National Commission on Certification of Physician Assistants (NCCPA)** may claim a maximum of 18.25 Category 1 credits for completing this activity. NCCPA accepts *AMA PRA Category 1 Credit™* from organizations accredited by ACCME or a recognized state medical society.

**THE JOHNS HOPKINS UNIVERSITY SCHOOL OF MEDICINE IS AUTHORIZED BY THE MARYLAND STATE BOARD OF EXAMINERS OF PSYCHOLOGISTS AS A PROVIDER OF CONTINUING EDUCATION.**

The Johns Hopkins University School of Medicine is authorized by the Maryland State Board of Examiners of Psychologists as a provider of continuing education. The Johns Hopkins University School of Medicine maintains responsibility for this program. A certificate for 18.25 CEUs will be awarded upon completion of this activity.

The Maryland Board of Social Work Examiners certifies that this program meets the criteria for 18.25 credit hours of Category 1 or 1.8 CEUs of continuing education for social workers and associates licensed in Maryland.

The Johns Hopkins University School of Medicine is an approved sponsor of the Maryland Board of Social Work Examiners for continuing education credits for licensed social workers in Maryland.

**hours for non-physicians.**

The Johns Hopkins University has approved this activity for 18.25 **contact hours for non-physicians.**

**POLICY ON SPEAKER AND PROVIDER DISCLOSURE**

It is the policy of the Johns Hopkins University School of Medicine that the speaker and provider globally disclose conflicts of interest. The Johns Hopkins University School of Medicine OCME has established policies in place that will identify and resolve conflicts of interest prior to this educational activity.

Detailed disclosure will be made prior to presentation of the education.

**REGISTRATION**

Monday, March 18, 2019 8:00 – 8:45 a.m.

**LOCATION**

Thomas B. Turner Building, Johns Hopkins University School of Medicine, 720 Rutland Avenue, Baltimore, Maryland 21205

The Turner Building is located on Rutland Avenue at Monument Street. Directions and campus parking information are available on our website under the Contact Us tab at <https://HopkinsCME.cloud-cme.com>. Handicapped parking is available in the nearby Rutland Garage. Complimentary round-trip transportation for attendees staying at conference headquarters hotel will be provided. *Johns Hopkins is smoke-free.*

**FEES**

**Register Online at:** <https://HopkinsCME.cloud-cme.com/aph.aspx?P=5&EID=15343>

**Methods of Payment:** We require full payment prior to the start of the instructional materials, continental breakfasts, refreshment breaks and lunches.

**Registration Fee**.....\$45

**Printed Syllabus**.....\$35

You will receive a confirmation by e-mail. If you have not received it by March 12, 2019, call (410) 502-9636 to confirm that you are registered.

A transcript of attendance will be available upon reiteration of your credit hours and submission of the post activity online evaluation.

The Johns Hopkins University reserves the right to cancel or postpone any activity due to unforeseen circumstances. In this event, the University will refund the registration fee but is not responsible for travel expenses. Additionally, we reserve the right to change the venue to a comparable venue. Under such circumstances registrants will be notified as soon as possible.

**LATE FEE AND REFUND POLICY**

A \$50 late fee applies to registrations received after 5:00 p.m. ET on March 12, 2019. A handling fee of \$50 will be deducted for cancellation. An additional fee may apply for cancellation of other events, including workshops and social activities.

Refund requests must be received by fax or mail by **March 12, 2019**. No refunds will be made thereafter. Transfer of registration to another Johns Hopkins activity in lieu of cancellation is not possible.

**SYLLABUS**

All registrants will receive a flash drive with the slides and paper for note-taking. This is included in the cost of your registration. A link to the syllabus will be provided via email shortly before the activity begins if you prefer to study or print the syllabus. A printed copy may be ordered at the time of registration for an additional fee of \$35. The printed copy will be provided during activity registration. Cancellations or refunds for the printed copy will not be permitted.

A complimentary reception for registrants and faculty will be held Monday, March 18, 2019, 5:10 – 6:00 p.m. Guests are invited to attend at an additional charge of \$20. Please indicate your attendance on the registration form.

**HOTEL AND TRAVEL INFORMATION**

**Homewood Suites by Hilton**  
625 South President Street  
Baltimore, Maryland 21202  
(410) 234-0999  
FAX: (443) 392-9020

**HOTEL RESERVATION CUT-OFF DATE: FEBRUARY 17, 2019**

A limited block of sleeping rooms has been reserved for your convenience and will be available on a first-come, first-served basis.

Make your reservation online at [https://homewoodsuites.hilton.com/en/hw/groups/personalized/B/BALHWHW-JHD-20190317/index.jhtml?WT.mc\\_id=POC](https://homewoodsuites.hilton.com/en/hw/groups/personalized/B/BALHWHW-JHD-20190317/index.jhtml?WT.mc_id=POC) or call the hotel directly and specify that you are attending the **Johns Hopkins Developmental Disabilities** group to receive the special group rate of \$179 for studio king or \$189 for a one bedroom double, plus tax. Complimentary roundtrip transportation will be provided. Check-in time is 3:00 p.m. Check-out time is 11:00 a.m.

**HOW TO OBTAIN CREDIT**

Post activity, an online evaluation will be available to attendees to evaluate the activity and individual presentations and to identify future educational needs. Upon completion of the evaluation, the learner must attest to the number of hours in attendance. Credits earned will be added to the learner's transcript and immediately available for print. **The last day to access the evaluation and attest to your credits is May 1, 2019.**

An outcome survey will be sent to all physician attendees within two months post activity to assist us in determining what impact this activity had on the learner's practice.

**EMERGENCY CALLS**

On March 18-20, 2019, direct emergency calls to the Hopkins registration desk, (410) 955-3673. Messages will be posted for participants.

**AMERICANS WITH DISABILITIES ACT**

The Johns Hopkins University School of Medicine fully complies with the legal requirements of the ADA and the rules and regulations thereof. *Please notify us if you have any special needs.*

**TO REGISTER OR FOR FURTHER INFORMATION**

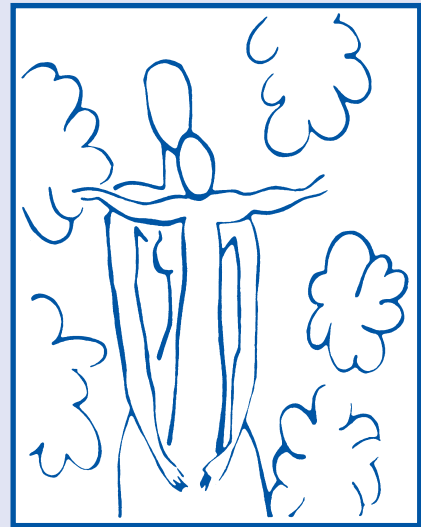
Register Online: <https://hopkinscme.cloud-cme.com/aph.aspx?P=5&EID=15343>  
Register by Phone (410) 502-9636  
Register by Fax (866) 510-7088  
General Information (410) 502-9636  
Confirmation/Certificates/Transcripts (410) 955-2959  
E-mail the Office of CME [cmetechsupport@jhmi.edu](mailto:cmetechsupport@jhmi.edu)  
Follow us on Twitter: <http://twitter.com/HopkinsCME>  
Facebook: <http://www.facebook.com/HopkinsCME>

Check out our mobile app CloudCME. Organization Code: **HopkinsCME**

For website and CloudCME mobile app technical difficulties, email: [cmetechsupport@jhmi.edu](mailto:cmetechsupport@jhmi.edu)  
For general information and speaker disclosure statements, please visit the activity webpage at: <https://hopkinscme.cloud-cme.com/aph.aspx?P=5&EID=15343>

**CONTINUING MEDICAL EDUCATION**

**The Spectrum of  
Developmental Disabilities XLI:  
Disorders of Higher Cortical Function in School:  
Learning, Attention, and Socialization**



March 18–20, 2019  
**Johns Hopkins University School of Medicine  
Thomas B. Turner Building  
Baltimore, Maryland**

Jointly Provided by Johns Hopkins University School of Medicine  
Division of Child Development, Department of Pediatrics  
and  
Kennedy Fellows Association  
Kennedy Krieger Institute

This activity has been approved for *AMA PRA Category 1 Credits™*.

PROGRAM		
<b>Monday, March 18, 2019</b> <i>Morning</i> 8:00 - 8:45 Registration and Continental Breakfast 8:45 - 9:00 <b>Welcome with Conference Goals</b> Bruce Shapiro, MD, Bradley L. Schlaggar, MD, PhD and Tina Cheng, MD, MPH <b>FOUNDATIONS</b> <i>Moderator: Brian Rogers, MD</i> 9:00 - 9:40 <b>The State of Special Education in the USA</b> James M. Kauffman, EdD 9:40 - 10:20 <b>When Should We Commence Academics?</b> Mary Leppert, MBBS 10:20 - 10:40 Refreshment Break 10:40 - 11:25 <b>Beyond Academics: What Else is Needed?</b> Sue Swenson, MBA 11:25 - 12:10 <b>Neurons and Neighborhoods:            What Have We Learned?</b> Harolyn M. E. Belcher, MD, MHS 12:10 - 12:30 <b>Question and Answer</b> All Morning Faculty 12:30 - 1:30 Lunch <i>Afternoon</i> <b>LEARNING AND THE BRAIN</b> <i>Moderator: Thomas Lock, MD</i> 1:30 - 2:15 <b>The Genetics of Cognition:            Implications for Neurodevelopmental Disorders</b> Lauren McGrath, PhD 2:15 - 3:00 <b>To Sleep... To Learn</b> Jennifer Accardo, MD, MSCE 3:00 - 3:20 Refreshment Break 3:20 - 4:05 <b>Reading, Math, and fMRI</b> Guinevere Eden, D. Phil. 4:05 - 4:50 <b>Neuroscience and Education:            Fantasy, Fallacy or Frontier</b> Daniel Willingham, PhD 4:50 - 5:10 <b>Question and Answer</b> All Afternoon Faculty 5:10 - 6:00 Welcome Reception	<b>Tuesday, March 19, 2019</b> <i>Morning</i> 8:00 - 8:30 Continental Breakfast <b>SPECIFIC DEVELOPMENTAL DISORDERS</b> <i>Moderator: Jacqueline Harris, MD, MS</i> 8:30 - 9:20 <b>Learning vs. Thinking: Lessons From            Intellectual Disability, Autism Spectrum            Disorder, and Specific Learning Disabilities</b> Mark Mahone, PhD 9:20 - 10:10 <b>Language Disorders:            A Specific Developmental Disorder            with Protean Manifestations</b> Jason Chow, PhD Refreshment Break 10:10 - 10:30 <b>The Spectrum of Specific            Learning Disability:            Comorbid or Coexisting Conditions?</b> Thomas Challman, MD 10:30 - 11:15 <b>Reading Revisited</b> Laurie Cutting, PhD 11:15 - 12:00 <b>Question and Answer</b> All Morning Faculty 12:00 - 12:30 Lunch <i>Afternoon</i> <b>COGNITION IN SECONDARY DISORDERS</b> <i>Moderator: Scott Myers, MD</i> 1:30 - 2:15 <b>The Role of Experience in Cognitive            Development: Integrating Executive,            Memory, and Mesolimbic Systems</b> Beatriz Luna, PhD 2:15 - 3:05 <b>Developmental Coordination            Disorder in the Classroom</b> Priscila Cacola, PhD Refreshment Break 3:05 - 3:25 <b>Epilepsy and Academic Underachievement</b> Frank Zelko, PhD	4:10 - 4:55 <b>Challenges in Reintegrating Children with            Mild Traumatic Brain Injury</b> Vera Joanna Burton, MD, PhD 4:55 - 5:25 <b>Question and Answer</b> All Afternoon Faculty <b>Wednesday, March 20, 2019</b> <i>Morning</i> 8:00 - 8:30 Continental Breakfast <b>MANAGEMENT</b> <i>Moderator: Paul Lipkin, MD</i> 8:30 - 9:15 <b>Why Children with ADHD Fail</b> Paul Lipkin, MD 9:15 - 10:00 <b>Home Schooling Children            With Special Needs</b> Patrick J. Wolf, PhD 10:00 - 10:40 <b>Inclusion – Not for Everyone?</b> Mary Morningstar, PhD Refreshment Break 10:40 - 11:00 <b>Pharmacotherapy:            Does it Have a Role in            Cognitive Disorders</b> Scott Myers, MD 11:00 - 11:45 <b>Looking Backward:            Classroom Problems 50 Years Ago</b> Pasquale J. Accardo, MD 11:45 - 12:30 <b>Question and Answer</b> All Morning Faculty 12:30 - 1:00 <b>Question and Answer</b> All Morning Faculty 1:00 Adjourn You will receive an email notification to complete the evaluation form and to attest to the number of hours in attendance. The registration desk will remain open during conference hours. <i>The Johns Hopkins University School of Medicine takes responsibility for the content, quality and scientific integrity of this CME activity. This schedule is subject to change.</i>

**ACTIVITY DIRECTOR**

**Bruce Shapiro, MD**  
 Arnold J. Capute MD, MPH Chair in Neurodevelopmental Disabilities  
 Professor of Pediatrics  
 Johns Hopkins University School of Medicine  
 Vice President of Training  
 Kennedy Krieger Institute

**JOHNS HOPKINS AND KENNEDY KRIEGER FACULTY**

- Harolyn M. E. Belcher, MD, MHS**  
 Professor of Pediatrics  
 Johns Hopkins University School of Medicine  
 Director, Center for Diversity in Public Health Leadership Training  
 Kennedy Krieger Institute
- Vera Joanna Burton, MD, PhD**  
 Assistant Professor of Neurology  
 Johns Hopkins University School of Medicine
- Tina Cheng, MD, MPH**  
 Director, Department of Pediatrics  
 Given Foundation Professor of Pediatrics  
 Johns Hopkins University School of Medicine  
 Professor of Population, Family and Reproductive Health  
 Johns Hopkins Bloomberg School of Public Health  
 Pediatrician-in-Chief  
 The Johns Hopkins Hospital
- Jacqueline Harris, MD, MS**  
 Assistant Professor of Neurology  
 Johns Hopkins University School of Medicine

- Mary Leppert, MBBS**  
 Associate Professor of Pediatrics  
 Johns Hopkins University School of Medicine  
 Director, Center for Development and Learning  
 Kennedy Krieger Institute
- Paul Lipkin, MD**  
 Associate Professor of Pediatrics  
 Johns Hopkins University School of Medicine  
 Director, Medical Informatics and Interactive Autism Network  
 Kennedy Krieger Institute
- Mark Mahone, PhD**  
 Professor of Psychiatry and Behavioral Science-Psychology  
 Johns Hopkins University School of Medicine  
 Director, Neuropsychology  
 Kennedy Krieger Institute
- Bradley L. Schlaggar, MD, PhD**  
 President and CEO  
 Kennedy Krieger Institute  
 Professor of Neurology and Pediatrics  
 Johns Hopkins University School of Medicine

**GUEST SPEAKERS**

- Jennifer Accardo, MD, MSCE**  
 Assistant Professor of Pediatrics  
 Virginia Commonwealth University School of Medicine  
 Director, Maternal and Child Health Bureau LEND Program
- Pasquale J. Accardo, MD**  
 James Franklin Professor of Developmental Pediatrics  
 Virginia Commonwealth University
- Priscila Cacola, PhD**  
 Assistant Professor of Kinesiology  
 Director, Developmental Motor Cognition Lab  
 University of Texas

- Thomas Challman, MD**  
 Clinical Associate Professor of Pediatrics  
 Temple University School of Medicine  
 Medical Director  
 Autism and Developmental Medicine Institute  
 Geisinger Health System
- Jason Chow, PhD**  
 Assistant Professor  
 Counseling and Special Education  
 Virginia Commonwealth University
- Laurie Cutting, PhD**  
 Patricia and Rodes Hart Endowed Chair  
 Professor of Psychology, Special Education, Radiological Sciences and Pediatrics  
 Vanderbilt University
- Guinevere Eden, D. Phil.**  
 Professor of Pediatrics  
 Director, Center for the Study of Learning  
 Georgetown University School of Medicine
- James M. Kauffman, EdD**  
 Professor Emeritus  
 Special Education  
 University of Virginia
- Thomas Lock, MD**  
 Professor of Clinical Pediatrics  
 Director, Section of Developmental Pediatrics  
 Indiana University School of Medicine  
 Riley Hospital for Children
- Beatriz Luna, PhD**  
 Staunton Professor of Psychiatry and Pediatrics  
 Professor of Psychology  
 University of Pittsburgh School of Medicine  
 Director, Laboratory of Neurocognitive Development  
 Western Psychiatric Institute and Clinic
- Lauren McGrath, PhD**  
 Assistant Professor of Psychology  
 University of Denver

- Mary Morningstar, PhD**  
 Professor of Education  
 Portland State University
- Scott Myers, MD**  
 Clinical Associate Professor of Pediatrics  
 Temple University School of Medicine  
 Neurodevelopmental Pediatrician  
 Autism and Developmental Medicine Institute  
 Geisinger Health System
- Brian Rogers, MD**  
 Professor of Pediatrics  
 Oregon Health and Science University
- Sue Swenson, MBA**  
 President  
 Inclusion International
- Daniel Willingham, PhD**  
 Professor of Psychology  
 University of Virginia
- Patrick J. Wolf, PhD**  
 Distinguished Professor of Education Policy  
 21st Century Chair in School Choice  
 University of Arkansas
- Frank Zelko, PhD**  
 Associate Professor of Psychiatry and Behavioral Sciences  
 Feinberg School of Medicine at  
 Northwestern University

**COMMERCIAL SUPPORT**  
 The Johns Hopkins University School of Medicine did not solicit or receive commercial funding from any commercial entity, including pharmaceutical and medical device manufacturers, for this activity.

**REGISTRATION FORM** Course Number 80046863/15343

**The Spectrum of Developmental Disabilities XLI: Disorders of Higher Cortical Function in School: Learning, Attention, and Socialization • March 18-20, 2019**

**To Register: Online:** <https://hopkinscme.cloud-cme.com/aph.aspx?P=5&EID=15343>  
**Fax:** (866) 510-7088 **Phone:** (410) 502-9636

Or mail this form to the Johns Hopkins University, Office of Continuing Medical Education, 720 Rutland Avenue, Turner Room 20, Baltimore, Maryland 21205-2195. Include e-check or credit card information below.  
**FULL PAYMENT IS REQUIRED PRIOR TO THE START OF ACTIVITY.**

I am a Johns Hopkins speaker for this activity.

Please type or print clearly:

last name		first name	m.i.	
highest degree	primary specialty		Hopkins faculty/staff only JHED ID	
<b>For Physicians Only:</b>	NPI – 10 digits	State License #	State of License	
organization		mailing address		
city	state	ZIP + 4 code	country	
daytime telephone		fax number		
e-mail (required field)				

Check here if you wish to receive e-mail notices about upcoming CME activities.  
 I plan to stay at the Homewood Suites by Hilton in Baltimore, Maryland.  
 What do you hope to learn by attending this activity? \_\_\_\_\_  
 Please notify us if you have any special needs. \_\_\_\_\_

**Registration Fee:** ..... \$545  
**Printed Syllabus:**..... \$35

The registration fee includes instructional materials and food and beverage. For registrations received after 5:00 p.m. ET on **March 12, 2019**, include a \$50 late fee. On-site registrations are payable only by credit card.

**Payment Type:** Total amount \$ \_\_\_\_\_

**JHU Faculty/Staff Only:** If you are using your Tuition Remission Benefit or an ION budget, please upload your fully completed and approved form in the payment section of the online activity link above.  
 TR Form: <http://benefits.jhu.edu/documents/trffcandstaff.pdf>  
 ION Form: <http://hopkinscme.edu/migration/IonRequest.pdf>

**e-Check: Routing Number:** \_\_\_\_\_ **Account Number:** \_\_\_\_\_  
 **Credit Card:**  VISA  MASTERCARD  DISCOVER  AMEX  
 Card # \_\_\_\_\_ - \_\_\_\_\_ - \_\_\_\_\_ - \_\_\_\_\_ Exp. Date \_\_\_\_\_  
 Billing Zip Code \_\_\_\_\_ Security Code \_\_\_\_\_  
 Name on Card \_\_\_\_\_  
 Signature and Date \_\_\_\_\_