

SAVE
THE
DATE

Johns Hopkins University School of Medicine
Division of Interventional Pulmonology

Presents

Ninth Annual
**Evaluation and Management of
Pleural Disease**
January 21–22, 2019



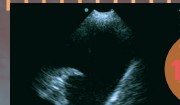
1910



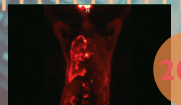
1930



1960



1990



2019

Arcade Room, Chevy Chase Bank Conference Center
The Sheikh Zayed Tower
and the
Minimally Invasive Surgical Training Center (MISTC Lab)
The Johns Hopkins Hospital
Baltimore, Maryland

Breakout
Session
for RN's, PA's,
and NP's



JOHNS HOPKINS
MEDICINE

To Register or For Further Information

Register Online

<https://hopkinscme.cloud-cme.com/aph.aspx?P=5&EID=14934>

Register by Phone

(410) 502-9634

Register by Fax

(866) 510-7088

Confirmation/Certificates/Transcripts

(410) 502-9634

General Information

(410) 955-2959

E-mail the Office of CME

cmenet@jhmi.edu

Follow us on Twitter:

<http://twitter.com/HopkinsCME>

Facebook:

<http://www.facebook.com/HopkinsCME>

Sponsoring Division Website:

www.hopkinsmedicine.org/pulmonary/clinics/interventional/

For general information, please visit the activity webpage at

<https://hopkinscme.cloud-cme.com/aph.aspx?P=5&EID=14934>



Check out our mobile app CloudCME.

Organization Code: *hopkinscme*

For website and cloudCME mobile app technical difficulties,

Email: cmetechnsupport@jhmi.edu



JOHNS HOPKINS
MEDICINE

Johns Hopkins University School of Medicine

Office of Continuing Medical Education

Turner 20, 720 Rutland Avenue

Baltimore, Maryland 21205-2195

NONPROFIT ORG.
U.S. POSTAGE
PAID
BELLMAWR NJ
PERMIT NO. 2134

DATED MATERIAL