

The Wilmer Eye Institute

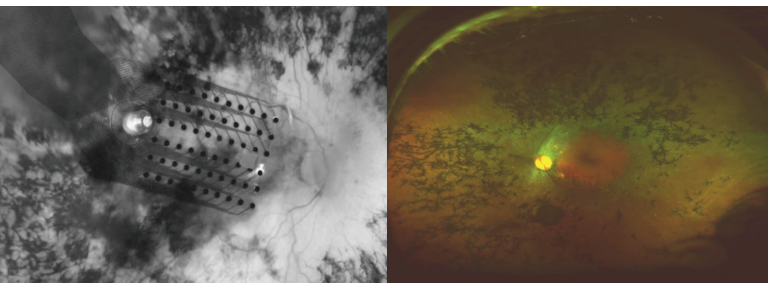


*Johns Hopkins University School of Medicine
Department of Ophthalmology
Presents*

Johns Hopkins Retinal Degenerations and Clinical Electrophysiology Course 2019

February 1 – 2, 2019

Mount Washington Conference Center
Baltimore, Maryland



This activity has been approved for *AMA PRA Category 1 Credits™*.



JOHNS HOPKINS
MEDICINE

DESCRIPTION

This one and a half day course is designed to educate ophthalmologists, retina specialists, and ophthalmology residents and fellows on the latest developments in the field of retinal degeneration, repair and regeneration, and provide a refresher course on clinical electrophysiology of vision.

WHO SHOULD ATTEND

This activity is intended for ophthalmologists and retina specialists.

OBJECTIVES

After attending this activity, the participant will demonstrate the ability to:

- Review recommendations from the International Society of Clinical Electrophysiology of Vision (ISCEV) regarding visual neurophysiology testing.
- Review safety and efficacy of retinal stem cell and gene therapy clinical trials.
- Outline latest developments in the field of retinal degeneration, repair and regeneration.

Accreditation Statement

The Johns Hopkins University School of Medicine is accredited by the Accreditation Council for Continuing Medical Education (ACCME) to provide continuing medical education for physicians.



Credit Designation Statement

The Johns Hopkins University School of Medicine designates this live activity for a maximum of 12.75 AMA PRA Category 1 Credits™. Physicians should claim only the credit commensurate with the extent of their participation in the activity.

Policy on Speaker and Provider Disclosure

It is the policy of the Johns Hopkins University School of Medicine that the speaker and provider globally disclose conflicts of interest. The Johns Hopkins University School of Medicine OCME has established policies that will identify and resolve conflicts of interest prior to this educational activity. Detailed disclosure will be made prior to presentation of the education.

General Information

Registration

February 1, 2019 • 11:00 a.m. – 12:00 p.m.

Location

Mount Washington Conference Center
5801 Smith Avenue, Suite 1100
Baltimore, Maryland 21209

Toll Free: (800) 488-8734
Phone: (410) 735-7964
Fax: (410) 735-4907

City close and country quiet, the Mount Washington Conference Center and its historic Octagon is a distinctive destination for meetings and events. Nestled among the hills just beyond the city limits of Baltimore, it combines over a century of educational traditions with progressive design and technology, creating an ideal setting for communicating and sharing ideas.

Overnight accommodations are available and must be reserved by January 3, 2019. Please call (410) 735-7964 and mention the Wilmer Degeneration/Regeneration conference to receive the standard guest room rate of \$99, plus taxes.

Directions and campus parking information are available on our website under the Contact Us tab at <https://HopkinsCME.cloud-cme.com>. On-site complimentary parking is available. *Johns Hopkins is smoke-free.*

Fees

Register Online:

<https://hopkinscme.cloud-cme.com/aph.aspx?P=5&EID=14664>

Methods of Payment: We require full payment prior to the start of the activity. On-site payments by credit card only. The registration fee includes instructional materials, continental breakfast, refreshment breaks and lunches.

Day 1 Only	\$250
Day 2 Only	\$325
Day 1 / Day 2 Bundle	\$500

You will receive a confirmation by e-mail. If you have not received it by **January 26, 2019**, call (410) 502-9636 to confirm that you are registered. A transcript of attendance will be available upon attestation of your credit hours and submission of the post activity online evaluation.

The Johns Hopkins University reserves the right to cancel or postpone any activity due to unforeseen circumstances. In this event, the University will refund the registration fee but is not responsible for travel expenses. Additionally, we reserve the right to change the venue to a comparable venue. Under such circumstances registrants will be notified as soon as possible.

Late Fee and Refund Policy

A \$50 late fee applies to registrations received after 5:00 p.m. ET on **January 26, 2019**. A handling fee of \$50 will be deducted for cancellation. An additional fee may apply for cancellation of other events, including workshops and social activities. Refund requests must be received by fax or mail by **January 26, 2019**. No refunds will be made thereafter. Transfer of registration to another Johns Hopkins activity in lieu of cancellation is not possible.

Syllabus

The syllabus will be accessible online and via your mobile device in the CloudCME App prior to the activity.

How to Obtain Credit

Post activity, an online evaluation will be available to attendees to evaluate the activity and individual presentations and to identify future educational needs. Upon completion of the evaluation, the learner must attest to the number of hours in attendance. Credits earned will be added to the learner's transcript and immediately available for print. **The last day to access the evaluation and attest to your credits is March 19, 2019.**

An outcome survey will be sent to all physician attendees within two months post activity to assist us in determining what impact this activity had on the learner's practice.

Emergency Calls

On February 1 - 2, 2019, direct emergency calls to (410) 735-7964 and ask that a message be sent to the Johns Hopkins registration desk. Messages will be posted for participants.

Americans with Disabilities Act

The Johns Hopkins University School of Medicine fully complies with the legal requirements of the ADA and the rules and regulations thereof. *Please notify us if you have any special needs.*

To Register or For Further Information

Register Online.....	https://hopkinscme.cloud-cme.com/aph.aspx?P=5&EID=14664
Register by Phone.....	(410) 502-9636
Register by Fax	(866) 510-7088
Confirmation/Certificates/Transcripts	(410) 502-9636
General Information.....	(410) 955-2959
E-mail the Office of CME.....	cmenet@jhmi.edu
Follow us on Twitter.....	http://twitter.com/HopkinsCME
Facebook.....	http://www.facebook.com/HopkinsCME

For general information, please visit the activity webpage at <https://hopkinscme.cloud-cme.com/aph.aspx?P=5&EID=14664>



Check out our mobile app CloudCME.
Organization Code: **HopkinsCME**

For website and CloudCME mobile app technical difficulties, email: cmtechsupport@jhmi.edu

Acknowledgement

Applications for commercial support from health care related industries are pending. A complete list of contributors will be provided in the syllabus. Please note that commercial support received is solely for the educational component of the activity and will not be used to provide food and beverage.

Please note: The Physician Payments Sunshine Act was enacted by Congress to increase public awareness of financial relationships between drug and medical device manufacturers and physicians. In compliance with the requirements of this Act, the commercial supporter/s of this activity may require the Johns Hopkins University School of Medicine to report certain professional information (such as name, address, National Provider Identifier (NPI), and State License number) of physician attendees who receive complimentary food and beverage in conjunction with a CME activity. The commercial supporter is required to submit the collected data to the Centers for Medicare and Medicaid Services which will then publish the data on its website.

Johns Hopkins Retinal Degenerations and Clinical Electrophysiology Course 2019

PROGRAM

DAY 1 • February 1, 2019 – Clinical Electrophysiology Course (Half Day)

12:00 – 12:30	Registration	3:05 – 3:35	Kinetic Perimetry and Applications <i>Gislin Dagnelie, MS, PhD</i>
12:30 – 12:35	Welcome, Introduction and Conference Goals <i>Fernando Arevalo, MD</i>	3:35 – 4:05	Fixation-Controlled Perimetry <i>Robert Chun, OD</i>
12:35 – 1:05	Origins of the Electroretinogram <i>Laura Frishman, PhD, FAAO, FARVO</i>	4:05 – 4:35	ISCEV Standards for Visual Electrophysiology <i>Laura Frishman, PhD, FAAO, FARVO</i>
1:05 – 1:35	Full-Field Electroretinography and Applications <i>Laura Frishman, PhD, FAAO, FARVO</i>	4:35 – 5:35	Clinical Cases <i>Moderator: Mandeep Singh, MD, PhD</i> <i>Mary Johnson, PhD</i> <i>Anthony Moore, MD</i>
1:35 – 2:05	Electro-Oculogram and Applications <i>Anthony Moore, MD</i>	5:35	Adjourn
2:05 – 2:35	Visual Evoked Potential (VEP) and Applications <i>Mary Johnson, PhD</i>		
2:35 – 3:05	Refreshment Break		

DAY 2 • February 2, 2019 – Retinal Degenerations Course (Full Day)

SESSION I – CLINICAL BASICS

7:15 – 7:55	Registration and Continental Breakfast
7:55 – 8:00	Welcome, Introduction and Conference Goals <i>Fernando Arevalo, MD</i>
8:00 – 8:30	Vitamin A and Nutritional Supplements <i>Robert Massof, PhD</i>
8:30 – 9:00	Genetic Testing <i>Christy Smith, MS</i>
9:00 – 9:30	Retinal Dystrophy Mimics of AMD <i>Peter Charbel Issa, DPhil, FEBO</i>
9:30 – 10:00	Cone Dysfunction and Dystrophies <i>Andrew Carey, MD</i>
10:00 – 10:10	Refreshment Break
10:10 – 10:40	Stargardt Disease and Macular Dystrophies <i>Anthony Moore, MD</i>
10:40 – 11:10	Retinitis Pigmentosa <i>Robert Massof, PhD</i>
11:10 – 11:40	Syndromic Retinal Dystrophies <i>Anthony Moore, MD</i>
11:40 – 12:10	Autoimmune Retinopathy <i>Hatice Nida Sen, MD, MHS</i>
12:10 – 12:55	Lunch and Exhibition

SESSION II – THERAPY UPDATES

12:55 – 1:05	Introduction of Inaugural Special Lecture 2019 <i>James Handa, MD</i>
1:05 – 1:55	Keynote Lecture: Development of Stem Cell Derived RPE Monolayer Transplantation <i>Kapil Bharti, PhD</i>
1:55 – 2:25	Retinal Prosthesis and Argus-II Update <i>Fernando Arevalo, MD</i>
2:25 – 2:55	Stem Cell Therapy Update <i>Mandeep Singh, MD, PhD</i>
2:55 – 3:05	Refreshment Break
3:05 – 3:35	Surgical Update <i>Mauricio Maia, MD, PhD</i>
3:35 – 4:05	CRISPR and Genome Editing Update <i>Donald Zack, MD, PhD</i>
4:05 – 4:35	Gene Therapy Update <i>Alun Barnard, PhD</i>
4:35 – 5:05	Pharmacotherapy and AMD Therapy Pipeline Update <i>Peter Campochiaro, MD</i>
5:05	Adjourn

You will receive an email notification to complete the evaluation form and to attest to the number of hours in attendance. The registration desk will remain open during conference hours.

The Johns Hopkins University School of Medicine takes responsibility for the content, quality and scientific integrity of this CME activity.

This schedule is subject to change.

February 1 – 2, 2019

Speakers

Activity Directors

Fernando Arevalo, MD

Edmund F. and Virginia B. Ball
Professor of Ophthalmology
Wilmer Eye Institute
Johns Hopkins University
School of Medicine
Chairman, Department of Ophthalmology
Johns Hopkins Bayview Medical Center

Johns Hopkins Speakers

Peter Campochiaro, MD

George S. and Dolores Dor Eccles
Professor of Ophthalmology
and Neuroscience
Wilmer Eye Institute
Johns Hopkins University
School of Medicine

Andrew Carey, MD

Assistant Professor of Ophthalmology
Wilmer Eye Institute
Johns Hopkins University
School of Medicine

Robert Chun, OD

Assistant Professor of Ophthalmology
Wilmer Eye Institute
Johns Hopkins University
School of Medicine

Gislin Dagnelie, MS, PhD

Associate Professor of Ophthalmology
Associate Director, Lions Vision
Research and Rehabilitation Center
Wilmer Eye Institute
Johns Hopkins University
School of Medicine

Guest Speakers

Alun Barnard, PhD

Senior Postdoctoral Research Scientist
Clinical Ophthalmology Research Group
Nuffield Department of Clinical Neurosciences
University of Oxford
United Kingdom

Kapil Bharti, PhD

Earl Stadtman Tenure-Track Investigator,
Unit on Ocular and Stem Cell
Translational Research
Adjunct Group Leader National Center
for Advancing Translational Sciences
National Eye Institute,
National Institutes of Health
Bethesda, Maryland

Laura Frishman, PhD, FAAO, FARVO

John and Rebecca Moores Professor
Associate Dean for Graduate
Studies and Research
University of Houston
College of Optometry
Houston, Texas

Peter Charbel Issa, DPhil, FEBO

Consultant Ophthalmic Surgeon
Oxford Eye Hospital
John Radcliffe Hospital
United Kingdom

Mandeep Singh, MD, PhD

Assistant Professor of Ophthalmology
Wilmer Eye Institute
Johns Hopkins University
School of Medicine

James Handa, MD

Robert Bond Welch Professor
Professor of Ophthalmology
Wilmer Eye Institute
Johns Hopkins University
School of Medicine

Robert Massof, PhD

Professor of Ophthalmology
Professor of Neuroscience
Founder and Director, Lions Vision
Research and Rehabilitation Center
Wilmer Eye Institute
Johns Hopkins University
School of Medicine

Christy Smith, MS

Genetics Counselor
McKusick-Nathans Institute of
Genetic Medicine
Johns Hopkins University
School of Medicine

Donald Zack, MD, PhD

Co-Director, Johns Hopkins Center for Stem Cells
and Ocular Regenerative Medicine (STORM)
Guernier Professor of Genetic Engineering
and Molecular Ophthalmology
Wilmer Eye Institute
Johns Hopkins University
School of Medicine

Mary Johnson, PhD

Associate Professor, Ophthalmology and
Visual Sciences
Director, Visual Electrodiagnostics Laboratory
University of Maryland
School of Medicine
Baltimore, Maryland

Mauricio Maia, MD, PhD

Professor of Ophthalmology
Vitreoretinal Surgeon Practice at Albert Einstein
Hospital (São Paulo) and
Vision Institute (São Paulo)
Federal University of São Paulo
Department of Ophthalmology
Vila Clementino
São Paulo, Brazil

Anthony Moore, MD

Professor of Ophthalmology
University of California San Francisco
San Francisco, California

Hatice Nida Sen, MD, MHS

Director of the Uveitis and Ocular Immunology
Fellowship Program
National Eye Institute
National Institutes of Health
Bethesda, Maryland

Registration Form

Course Number 80046146 / 14664

Johns Hopkins Retinal Degenerations and Clinical Electrophysiology Course 2019

February 1 – 2, 2019

To Register: Online:

<https://hopkinscme.cloud-cme.com/aph.aspx?P=5&EID=14664>

By fax: (866) 510-7088 **By phone:** (410) 502-9636

Or mail this form to the Johns Hopkins University, Office of Continuing Medical
Education, 720 Rutland Avenue, Turner Room 20, Baltimore, Maryland 21205-2195.
Include e-check or credit card information below.

FULL PAYMENT IS REQUIRED PRIOR TO THE START OF ACTIVITY.

I am a Johns Hopkins speaker for this activity.

Please type or print clearly:

last name		first name		m.i.
highest degree	primary specialty		Hopkins faculty/staff only JHED ID	
For Physicians Only:	NPI – 10 digits		State License #	State of License
organization		mailing address		
city		state	ZIP	country
daytime telephone			fax number	
e-mail (required)				

- Check here if you wish to receive e-mail notices about upcoming CME activities.
 I plan to stay at the Mount Washington Conference Center in Baltimore, Maryland.

What do you hope to learn by attending this activity?

Please notify us if you have any special needs.

Registration Fees:

- Day 1 Only.....\$250
 Day 2 Only.....\$325
 Day 1 / Day 2 Bundle.....\$500

The registration fee includes instructional materials and food and beverage. For
registrations received after 5:00 p.m. ET on **January 26, 2019**, include a \$50 late
fee. On-site registrations are payable only by credit card.

Total amount \$ _____

Payment Type:

JHU Faculty/Staff Only: If you are using your Tuition Remission Benefit
or an ION budget, please upload your fully completed and approved form in the
payment section of the online activity link above.

- TR Form** <http://benefits.jhu.edu/documents/trffacandstaff.pdf>
 ION Form <http://hopkinscme.edu/migration/IonRequest.pdf>

e-Check

Routing Number: _____ Account Number: _____

Credit Card: VISA MASTERCARD DISCOVER AMEX

Card # _____ - _____ - _____ Exp. Date _____

Billing Zip Code: _____ Security Code: _____

Name on Card

Signature and Date



JOHNS HOPKINS
M E D I C I N E

Office of Continuing Medical Education
720 Rutland Avenue, Turner 20
Baltimore, Maryland 21205-2195

Non-Profit Org.
U.S. Postage
PAID
Bellmawr, NJ
Permit No. 2134

**Johns Hopkins
Retinal Degenerations and
Clinical Electrophysiology
Course 2019**

**February 1 - 2, 2019
Baltimore, Maryland**



CloudCME

Check out our mobile app CloudCME.
Organization Code: **HopkinsCME**

<https://hopkinscme.cloud-cme.com/aph.aspx?P=5&EID=14664>

Dated Material