

Johns Hopkins University School of Medicine
 Division of Gastroenterology
 and The Institute for Johns Hopkins Nursing
 Present

44TH ANNUAL TOPICS IN GASTROENTEROLOGY AND HEPATO-BILIARY UPDATE

SEPTEMBER 26-28, 2018

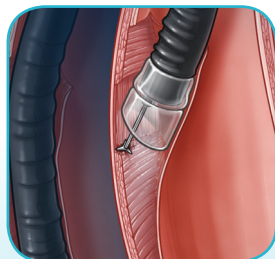
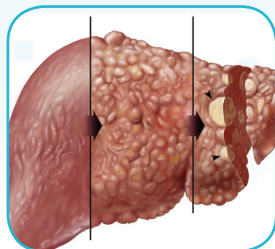
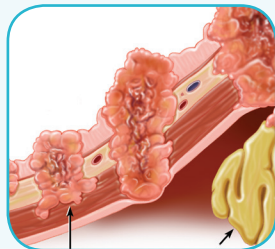
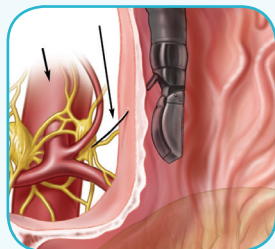
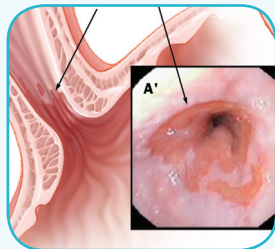
Chevy Chase Bank Conference Center
 The Sheikh Zayed Tower
 The Johns Hopkins Hospital
 Baltimore, Maryland

ACTIVITY DIRECTORS:

Anthony Kalloo, MD Eun Ji Shin, MD, PhD

CO-DIRECTORS:

Mouen Khashab, MD	Ashley Salamone, MSN, CRNP	Megan Walker, RN
Mark Lazarev, MD	Vikesh Singh, MD, MSc	Matthew Weiss, MD
Monica Riegert, DNP, CRNP	Ellen Stein, MD	Tinsay Woreta, MD, MPH



- Advanced Practice Provider Track
- Nursing Track
- Meet national and international faculty
- Discuss your challenging cases with the experts during Lunch with the Professors
- This activity has been approved for AMA PRA Category 1 Credit™

Endorsed by the AGA Institute



JOHNS HOPKINS
 NURSING



JOHNS HOPKINS
 MEDICINE

DESCRIPTION

This activity will provide an update and comprehensive overview of a wide range of topics of interest to the practicing gastroenterologist, surgeon, family physician, internist, physician assistant, nurse and nurse practitioner. The understanding of the pathophysiology, natural history and treatment of diseases of the digestive tract and liver is progressing at a rapid pace. This activity will provide practitioners who care for patients with digestive diseases with an in-depth knowledge of recent, cutting-edge advancements in Gastroenterology and Hepatology. Moreover, practitioners will be informed about new therapies and treatments on the horizon in order to be prepared to inform patients and field their questions.

An important feature of this activity is its case panel discussions. One of our frequent challenges is making practical use of knowledge. Therefore, the activity format will include case presentation discussion sessions with a multidisciplinary panel of experts from medical, endoscopic and surgical disciplines, discussing diagnostic and management controversies. Among areas of focus for these panels will be inflammatory bowel disease, esophageal disorders, gastrointestinal neoplasia, motility and liver disease, including liver transplantation. During the lunchtime session, attendees will have the opportunity to discuss controversies specific to their personal practices with activity faculty.

Who Should Attend

This activity is intended for gastroenterologists, gastroenterology fellows and advanced fellows, surgeons, hepatologists, family practitioners, internists, PAs, nurses, nurse practitioners and other allied health professionals with an interest in gastroenterology.

Objectives

After attending this activity, the participant will demonstrate the ability to:

- Discuss the multidisciplinary approach to management of obesity.
- Describe the latest approaches to treat fatty liver disease.
- Discuss the management options for pancreatic diseases.
- Discuss the multidisciplinary approach to management of esophageal diseases.
- Describe the latest therapies for inflammatory bowel disease.

ACCREDITATION

Accreditation Statement

This activity has been planned and implemented in accordance with the accreditation requirements and policies of the Accreditation Council for Continuing Medical Education (ACCME) through the joint providership of Johns Hopkins University School of Medicine and The Institute for Johns Hopkins Nursing. The Johns Hopkins University School of Medicine is accredited by the ACCME to provide continuing medical education for physicians.

The Institute for Johns Hopkins Nursing is accredited as a provider of continuing nursing education by the American Nurses Credentialing Center's Commission on Accreditation.

Credit Designation Statement

The Johns Hopkins University School of Medicine designates this live activity for a maximum of 26 *AMA PRA Category 1 Credits™*. Physicians should claim only the credit commensurate with the extent of their participation in the activity.

MOC Statement

Successful completion of this CME activity, which includes participation in the evaluation component, enables the participant to earn up to 26 MOC points in the American Board of Internal Medicine's (ABIM) Maintenance of Certification (MOC) program. Participants will earn MOC points equivalent to the amount of CME credits claimed for the activity. It is the CME activity provider's responsibility to submit participant completion information to ACCME for the purpose of granting ABIM MOC credit.



Other Credits

Application for CME credit has been filed with the American Academy of Family Physicians. Determination of credit is pending.

This 26 contact hour educational activity is jointly provided with The Institute for Johns Hopkins Nursing.

American Academy of Nurse Practitioners National Certification Program accepts *AMA PRA Category 1 Credit™* from organizations accredited by the ACCME.

PAs may claim a maximum of 26 Category 1 credits for completing this activity. NCCPA accepts *AMA PRA Category 1 Credit™* from organizations accredited by ACCME or a recognized state medical society.

The Johns Hopkins University has approved this activity for 26 contact hours for non-physicians.

Policy on Speaker and Provider Disclosure

It is the policy of the Johns Hopkins University School of Medicine that the speaker and provider globally disclose conflicts of interest. The Johns Hopkins University School of Medicine OCME has established policies that will identify and resolve conflicts of interest prior to this educational activity. Detailed disclosure will be made prior to presentation of the education.

GENERAL INFORMATION

Registration

Wednesday, September 26, 2018 • 7:15 – 7:50 a.m.

Location

Chevy Chase Bank Conference Center

The Sheikh Zayed Tower

The Johns Hopkins Hospital

1800 Orleans Street, Main Level

Baltimore, Maryland 21287

The Sheikh Zayed Tower is located on Orleans Street between Broadway and Wolfe Streets. Directions and campus parking information are available on our website under the Contact Us tab at <https://HopkinsCME.cloud-cme.com>. The closest garage is the Orleans Street Garage, which is located on Orleans Street (Route 40) between Wolfe Street and Broadway. Handicapped parking is also available in the McElderry Street Garage. *Johns Hopkins is smoke-free.*

Fees

Register Online at:

<https://HopkinsCME.cloud-cme.com/aph.aspx?P=5&EID=14571>

Methods of Payment: We require full payment prior to the start of the activity. The registration fee includes instructional materials, continental breakfasts, refreshment breaks and lunches.

Physicians.....\$550

Residents*/Fellows*/Nurses/NPs/PAs/

Allied Health Professionals.....\$125

Nursing Track (Nurses/NPs):

Thursday, September 27 Only.....No Charge

*with verification of status

Advanced Practice Provider Session (Nurses, NPs and PAs only):

Friday, September 28 Only.....No Charge

You will receive a confirmation by e-mail. If you have not received it by **September 21, 2018**, call (410) 502-9636 to confirm that you are registered. A transcript of attendance will be available upon attestation of your credit hours and submission of the post activity online evaluation.

The Johns Hopkins University reserves the right to cancel or postpone any activity due to unforeseen circumstances. In this event, the University will refund the registration fee but is not responsible for travel expenses. Additionally, we reserve the right to change the venue to a comparable venue. Under such circumstances registrants will be notified as soon as possible.

Late Fee and Refund Policy

A \$50 late fee applies to registrations received after 5:00 p.m. ET on September 21, 2018. A handling fee of \$50 will be deducted for cancellation. An additional fee may apply for cancellation of other events, including workshops and social activities. Refund requests must be received by fax or mail by September 21, 2018. No refunds will be made thereafter. Transfer of registration to another Johns Hopkins conference in lieu of cancellation is not possible.

Syllabus

The syllabus will be accessible online and via your mobile device in the CloudCME App prior to the activity.

Emergency Calls

On **September 26-28, 2018**, direct emergency calls to the Hopkins registration desk, (443) 287-5426. Messages will be posted for participants.

Hotel and Travel Arrangements

A limited block of sleeping rooms has been reserved for your convenience and will be available on a first come, first served basis at the follow properties:

Renaissance Harborplace Hotel (800) 468-3571

202 East Pratt Street (410) 547-1200

Baltimore, Maryland 21202 FAX: (410) 539-5780

Hotel Reservation Cut-Off Date: September 4, 2018

The Renaissance Harborplace Hotel is part of the waterfront complex of Harborplace, and only steps away from the many attractions of Baltimore's Inner Harbor. Make your reservation online at <https://aws.passkey.com/e/49699246> or call the hotel directly and specify that you are attending the **Johns Hopkins Topics in Gastroenterology and Hepato-Biliary** conference to receive the special group rate of \$169, single or double, plus tax. Complimentary roundtrip transportation to and from the conference will be provided. On-site parking is available at the hotel at an additional charge. Check-in time is 4:00 p.m. Check-out time is 12:00 p.m.

Residence Inn by Marriott Baltimore (443) 524-8400

800 North Wolfe Street Baltimore

Maryland 21205

Web Site: www.marriott.com

HOTEL RESERVATION CUT-OFF DATE: August 26, 2018

The Residence Inn Baltimore is located on the Johns Hopkins Medical Campus. Make your reservation at <https://tinyurl.com/y7l49sn7> or call the hotel directly and specify that you are attending the **Johns Hopkins CME Topics in Gastroenterology** to receive the special group rate of \$149 for one bedroom king suite, plus tax. On-site parking is available at the hotel at an additional charge. Check-in time is 4:00 p.m. Check-out time is 12:00 p.m.

How To Obtain Credit

Post activity, an online evaluation form will be available to attendees to evaluate the activity and individual presentations and identify future educational needs. Upon completion of the evaluation, the learner must attest to the number of hours in attendance. Credits earned will be added to the learner's transcript and immediately available for print. **The last day to access the evaluation and attest to your credits is November 14, 2018.**

A survey will be sent to all physician attendees within two months post activity to assist us in determining what impact this activity had on the learner's practice.

Americans with Disabilities Act

The Johns Hopkins University School of Medicine and The Institute for Johns Hopkins Nursing fully comply with the legal requirements of the ADA and the rules and regulations thereof. *Please notify us if you have any special needs.*

PROGRAM

THURSDAY, SEPTEMBER 27, 2018

WEDNESDAY, SEPTEMBER 26, 2018

7:15 - 7:50	Registration and Continental Breakfast
7:50 - 8:00	Welcome and Conference Goals Anthony Kalloo, MD <i>Session Chair: Matthew Weiss, MD</i>
8:00 - 8:20	Management of Difficult Colorectal Polyps: EMR, ESD, EFTR Saowanee Ngamruengphong, MD
8:20 - 8:40	Surgery for Perianal Disease Sandy Fang, MD
8:40 - 9:00	Updates on Management of Lower GI Bleed Ekta Gupta, MD
9:00 - 9:20	Updates on Surgery for Colorectal Cancer Bashar Safar, MBBS
9:20 - 9:40	Management of Endoscopic Perforation Saowanee Ngamruengphong, MD
9:40 - 10:00	Questions and Answers
10:00 - 10:10	<i>Refreshment Break</i>
	<i>Session Chair: Eun Ji Shin, MD, PhD</i>
10:10 - 10:35	Celiac Disease Eduardo Gonzalez-Velez, MD
10:35 - 10:55	Abdominal Pain in the Roux-En-Y Bypass Patient Dilhana Badurdeen, MBBS
10:55 - 11:20	GI Considerations after Bariatric Surgery Gina Adrales, MD, MPH
11:20 - 11:45	Small Bowel Bleeding Kathy Bull-Henry, MD, MBA
11:45 - 12:00	Questions and Answers
12:00 - 1:00	Lunch with the Professors Non-Variceal Upper GI Bleeding Management Eduardo Gonzalez-Velez, MD Endoscopic Bariatric Therapy Dilhana Badurdeen, MBBS Rectal Mass Management: Endoscopy, Surgery, or Both Saowanee Ngamruengphong, MD, Sandy Fang, MD Alcoholic Liver Disease James Hamilton, MD, Saleh Alqahtani, MBBS Management of the Cirrhotic Patient Kirty Shetty, MD, Jacqueline Laurin, MD Liver Mass and Liver Cancer Amy Kim, MD, Tinsay Woretta, MD, MPH Hands On Demo: Clips Kathy Bull-Henry, MD, MBA Hands On Demo: Capsule Endoscopy Kathy Bull-Henry, MD, MBA <i>Session Chair: James Hamilton, MD</i>
1:00 - 1:25	Advances in Management of Non-Alcoholic Fatty Liver Disease Saleh Alqahtani, MBBS
1:25 - 1:50	Current and Emerging Therapies for PBC and PSC James Hamilton, MD
1:50 - 2:15	Update on Chronic Viral Hepatitis (Hepatitis B and C) Tinsay Woretta, MD, MPH
2:15 - 2:40	Management of Refractory Autoimmune Hepatitis Jacqueline Laurin, MD
2:40 - 3:00	Questions and Answers
3:00 - 3:15	<i>Refreshment Break</i>
	<i>Session Chair: Tinsay Woretta, MD, MPH</i>
3:15 - 3:40	Radiologic Approach to the Diagnosis of Liver Masses Ihab Kamel, MD
3:40 - 4:00	Complications of Portal Hypertension Amy Kim, MD
4:00 - 4:20	Management of Hepatocellular Cancer in 2018 Kirti Shetty, MD
4:20 - 4:45	Update on Liver Transplantation Benjamin Philosphpe, MD
4:45 - 5:00	Questions and Answers

7:15 - 8:00	Registration and Continental Breakfast <i>Session Chair: Vikesh Singh, MD, MSc</i>
8:00 - 8:20	Top 10 Management Tips for Acute Pancreatitis in 2018 Vikesh Singh, MD, MSc
8:20 - 8:40	Surveillance of the Incidental Pancreatic Cyst Anne Marie Lennon, MD, PhD
8:40 - 9:00	Can Imaging Differentiate Autoimmune Pancreatitis from Pancreatic Cancer? Atif Zaheer, MD
9:00 - 9:20	Who Should I Refer for a Total Pancreatectomy with Islet Autotransplantation? Vikesh Singh, MD, MSc
9:20 - 9:40	Surgical Management of PNETs Jin He, MD, PhD
9:40 - 10:00	Questions and Answers
10:00 - 10:15	<i>Refreshment Break</i>
	<i>Session Chair: Marcia Canto, MD, MHS</i>
10:15 - 10:35	Management of Complications of GERD Marcia Canto, MD, MHS
10:35 - 10:55	Benefits and Risks of PPI Therapy Ellen Stein, MD
10:55 - 11:15	Advances in Endoscopic Options for GERD Marcia Canto, MD, MHS
11:15 - 11:35	Advances in Surgical Options for GERD Alisa Coker, MD
11:35 - 12:00	Questions and Answers
12:00 - 1:00	Lunch with the Professors Total Pancreatectomy and Islet Cell Transplant for Chronic Pancreatitis Vikesh Singh, MD, MSc, Jin He, MD, PhD Difficult to Manage GERD and Dyspepsia: My Approach Marcia Canto, MD, MHS Refractory Diarrhea Hazel Veloso, MD, Marshall Bedine, MD Hyperflexibility, Prolapse, and Pelvic Floor Dysfunction Robert Bulat, MD Integrative Approaches to Functional GI Disorders Frances Meyer, MD My Approach to Patient with Dysphagia Ikuo Hirano, MD Hands On Demo: Motility Testing Ellen Stein, MD Hands On Demo: Medtronic Endoflip Ellen Stein, MD <i>Session Chair: Ellen Stein, MD</i>
1:00 - 1:30	Eosinophilic Esophagitis: State-of-the-Art in Medical Management - Biologics? Ikuo Hirano, MD
1:30 - 1:55	A "How To" Guide for Neuromodulators in Functional GI Syndromes Ellen Stein, MD
1:55 - 2:20	Gastroparesis Basics: Making the Vomiting Stop Robert Bulat, MD
2:20 - 2:50	Eosinophilic Esophagitis: State-of-the-Art in Endoscopic and Difficult Case Management Ikuo Hirano, MD
2:50 - 3:00	Questions and Answers
3:00 - 3:15	<i>Refreshment Break</i>
	<i>Session Chair: Robert Bulat, MD</i>
3:15 - 3:40	IBS: Food and Nutrition as Therapy Shadi Yarandi, MD
3:40 - 4:00	Small Intestinal Bacterial Overgrowth: What You Need to Know Hazel Veloso, MD
4:00 - 4:20	Fecal Incontinence: When Medication Isn't Enough Susan Gearhart, MD
4:20 - 4:40	Making Sense of Constipation Management Robert Bulat, MD
4:40 - 5:00	Questions and Answers

FRIDAY, SEPTEMBER 28, 2018

7:15 - 8:00	Registration and Continental Breakfast <i>This session is not available for AMA PRA Category 1 Credits (TM).</i> Session Chair: Peter Cotton, MD
8:00 - 8:20	Identifying and Solving Unmet Needs in Gastroenterology Robert Hawes, MD
8:20 - 8:40	Concept to Product: Navigating Innovation, Intellectual Property to Success Dennis McWilliams, MD
8:40 - 9:00	Natural Orifice Transluminal Endoscopic Surgery (NOTES): The Impact on Medicine Today Anthony Kalloo, MD
9:00 - 9:20	Endoscopic Suturing: An Enabling Technology for Endoscopic Interventions Sergey Kantsevov, MD
9:20 - 9:40	Questions and Answers
9:40 - 9:50	Refreshment Break
9:50 - 10:15	Session Chair: Anthony Kalloo, MD Submucosal Endoscopy: The "New" Third Space for Endoscopy Christopher Gostout, MD
10:15 - 10:40	Targeting the LES: Innovation, Technology and the Future P. Jay Pasricha, MD
10:40 - 11:05	Innovations in Endoscopy: Where Do We Go From Here? S. C. Sydney Chung, MD, FRCS, FRCP
11:05 - 11:20	Questions and Answers
11:20 - 12:00	Challenging Therapeutic Endoscopy Cases from Johns Hopkins
12:00 - 1:00	Lunch with the Professors Post-ERCP Pancreatitis Peter Cotton, MD Quality Measures in Endoscopy: What You Need to Know for Your Practice Simon Mathews, MD Update on Surgery for IBD Michael Marohn, DO Fecal Bacteriotherapy Alyssa Parian, MD Biosimilars in IBD: What You Need to Know Joanna Melia, MD Management of IBD in Pregnancy Brindusa Truta, MD, Mark Lazarev, MD Hands On Demo: Apollo Overstitch Sergey Kantsevov, MD Session Chair: Mark Lazarev, MD
1:00 - 1:40	State-of-the-Art: Crohn's Perianal Disease David Schwartz, MD
1:40 - 2:00	What is the Best Approach to Severe UC? Alyssa Parian, MD
2:00 - 2:20	Extra-Intestinal Manifestations in IBD: What You Need to Know Brindusa Truta, MD
2:20 - 2:40	The Microbiome and IBD Joanna Melia, MD
2:40 - 3:00	Questions and Answers
3:00 - 3:15	Refreshment Break
3:15 - 3:40	Session Chair: Joanna Melia, MD Approach to Small Bowel Resection in Crohn's: Minimizing the Damage Michael Marohn, DO
3:40 - 4:00	Approach to Post-Operative Prophylaxis for Crohn's in 2018 Mark Lazarev, MD
4:00 - 4:20	Biologics for IBD: What's New and What's in the Pipeline Florin Selaru, MD
4:20 - 4:40	Understanding the Risks of Biologics Reezwana Chowdhury, MD
4:40 - 5:00	Questions and Answers
5:00	Adjourn

You will receive an email notification to complete the evaluation form and to attest to the number of hours in attendance.

The registration desk will remain open during conference hours.

NURSING TRACK

THURSDAY, SEPTEMBER 27, 2018

7:15 - 7:50	Registration and Continental Breakfast
7:50 - 8:00	Welcome and Conference Goals Megan Walker, RN Session Chair: Megan Walker, RN
8:00 - 8:20	Chronic Constipation: Treatment and Support Angela Chang Chiu, MSN, RN
8:20 - 8:40	Effective Modalities for Managing Chronic Abdominal Pain Megan Walker, RN
8:40 - 9:00	New and Upcoming Biologics for Your IBD Patient Leah Lewis-Garger, RN, MSN
9:00 - 9:20	Your Patient with Diarrhea: Solid Advice for Solid Stools Lisa Silva, BSN, RN
9:20 - 9:40	Nutritional Interventions for Your GI Patient Katie Fritch, BSN, RN
9:40 - 10:00	SIBO: Medical and Dietary Intervention Elisheva Weiser, BSN, RN
10:00 - 10:20	Refreshment Break
10:20 - 10:40	Session Chair: Megan Walker, RN GERD: New Endoscopic Therapies Margaret Malleis, BSN, RN
10:40 - 11:00	Barrett's Esophagus: Current Treatment Options in 2018 Hilary Cosby, RN, CGRN
11:00 - 11:20	Current Endoscopic Weight Loss Options Margo Dunlap, BSN, RN
11:20 - 11:40	How to Safely Introduce New Procedures and Product into Your Practice MaryRose Hess, RN, BSN, NCIH
11:40 - 12:00	Questions and Answers/Session Wrap-up
12:00	Adjourn

You will receive an email notification to complete the evaluation form and to attest to the number of hours in attendance.

The registration desk will remain open during conference hours.

Acknowledgment

Applications for commercial support from health care related industries are pending. A complete list of contributors will be provided in the syllabus. Please note that commercial support received is solely for the educational component of the activity and will not be used to provide food and beverage.

Please note: The Physician Payments Sunshine Act was enacted by Congress to increase public awareness of financial relationships between drug and medical device manufacturers and physicians. In compliance with the requirements of this Act, the commercial supporter/s of this activity may require the Johns Hopkins University School of Medicine to report certain professional information (such as name, address, National Provider Identifier (NPI), and State License number) of physician attendees who receive complimentary food and beverage in conjunction with a CME activity. The commercial supporter is required to submit the collected data to the Centers for Medicare and Medicaid Services which will then publish the data on its website.

To Register or For Further Information

Register Online
<https://HopkinsCME.cloud-cme.com/aph.aspx?P=5&EID=14571>
Register by Phone.....(410) 502-9636
Register by Fax.....(866) 510-7088
Confirmation/Certificates/Transcripts.....(410) 502-9636
General Information.....(410) 955-2959
E-mail the Office of CME.....cmenet@jhmi.edu

Follow us on Twitter: <http://twitter.com/HopkinsCME>
Facebook: <http://www.facebook.com/HopkinsCME>

For general information, the activity webpage:
<https://hopkinscme.cloud-cme.com/aph.aspx?P=5&EID=14571>

For website and CMEcloud mobile app technical difficulties, email:
cmetchsupport@jhmi.edu

Check out our mobile app CloudCME
Organization Code: HopkinsCME



FRIDAY, SEPTEMBER 28, 2018

7:15 – 7:50 Registration and Continental Breakfast
 7:50 – 8:00 **Welcome and Conference Goals**
 Ashley Salamone, MSN, CRNP
 Monica Riegert, DNP, CRNP

Session 1 **Focusing on the Foregut**
Moderator: Monica Riegert, DNP, CRNP
 8:00 – 8:30 **Esophageal Dysmotility**
 Valerie Owens, MSN, CRNP
 8:30 – 9:00 **Gastroparesis: Evaluation and Management**
 Monica Riegert, DNP, CRNP
 9:00 – 9:30 **Functional Heartburn and Atypical Chest Pain**
 Ashley Salamone, MSN, CRNP
 9:30 – 10:00 **Total Pancreatectomy and Islet Cell Transplant**
 Christi Walsh, MSN, CRNP

10:00 – 10:15 *Refreshment Break*
Session 2 **Looking at the Liver**
Moderator: Ashley Salamone, MSN, CRNP
 10:15 – 10:45 **NASH: Cutting the Fat**
 Jae Lee, MSN, CRNP
 10:45 – 11:10 **Iron Overload**
 Jacqueline Darmody, MSN, CRNP
 11:10 – 11:35 **The ABCs of Hepatitis A, B, and C**
 Kathryn Lee-Young, MSN, CRNP
 11:35 – 12:00 **Liver Transplantation: What You Need to Know**
 Maura Belden, DNP, CRNP

12:00 – 1:30 **Lunch with the Professors**
Group will be escorted to lunch session immediately at 12:00 and return at 1:30.

Session 3 **Colon Concepts**
Moderator: Monica Riegert, DNP, CRNP
 1:30 – 1:50 **Abdominal Pain: Getting to the Source**
 Sharon Dudley-Brown, PhD, CRNP
 1:50 – 2:10 **Approach to Microscopic Colitis**
 Monica Riegert, DNP, CRNP
 2:10 – 2:30 **Colon Cancer Screening: When your Patient Refuses a Colonoscopy**
 Kathryn Lee-Young, MSN, CRNP
 2:30 – 2:50 **Rectal Cancer: Detection to Treatment**
 Tam Warczynski, MSN, CRNP
 2:50 – 3:10 **Practice Pearls in IBD**
 Sharon Dudley-Brown, PhD, CRNP
 3:10 – 3:20 *Refreshment Break*

Session 4 **Midgut Management**
Moderator: Monica Riegert, DNP, CRNP
 3:20 – 3:50 **The Value of Acupuncture in GI Management**
 Jeff Gould LAc, DiplAc, DiplCh
 3:50 – 4:15 **Celiac Disease: My Approach**
 Ashley Salamone, MSN, CRNP
 4:15 – 4:45 **Deflating your Bloating Patient**
 Valerie Owens, MSN, CRNP
 4:45 – 5:00 **Questions and Answers/Session Wrap-up**
 5:00 *Adjourn*

You will receive an email notification to complete the evaluation form and to attest to the number of hours in attendance.

The registration desk will remain open during conference hours.

The Johns Hopkins University School of Medicine and the Institute for Johns Hopkins Nursing take responsibility for the content, quality and scientific integrity of this CME activity.

This schedule is subject to change.

SPEAKERS

Johns Hopkins University School of Medicine Baltimore, Maryland

Directors

Anthony Kalloo, MD
 Eun Ji Shin, MD, PhD

Co-Directors

Mouen Khashab, MD
 Mark Lazarev, MD
 Monica Riegert, DNP, CRNP
 Ashley Salamone, MSN, CRNP
 Vikesh Singh, MD, MSc
 Ellen Stein, MD
 Megan Walker, RN
 Matthew Weiss, MD
 Tinsay Woretta, MD, MPH

Guest Speakers

S. C. Sydney Chung MD, FRCS, FRCP
 Senior Consultant in General Surgery
 Union Hospital
 Tai Wai, Hong Kong
 Peter Cotton, MD
 Professor of Medicine
 Medical University of South Carolina
 Charleston, SC

Christopher Gostout, MD
 Professor of Medicine
 Consultant, Division of Gastroenterology and Hepatology,
 Department of Internal Medicine
 Mayo Clinic
 Rochester, NY

Robert Hawes, MD
 Professor of Gastroenterology
 Florida Hospital
 Orlando, FL

Ikuo Hirano, MD
 Professor of Medicine
 Director, Esophageal Center
 Northwestern University Feinberg School of Medicine
 Chicago, IL

Sergey Kantsevov, MD
 Director of The Center for Therapeutic Endoscopy
 Mercy Medical Center
 Baltimore, MD

Dennis McWilliams
 Entrepreneur
 Austin, Texas

David Schwartz, MD
 Professor of Medicine
 Director, Inflammatory Bowel Disease Center
 Vanderbilt University
 Medical Center
 Nashville, TN

Johns Hopkins Speakers

Gina Adrales, MD, MPH
 Saleh Alqahtani, MBBS
 Dilhana Badurdeen, MBBS
 Marshall Bedine, MD
 Maura Belden, DNP, CRNP
 Robert Bulat, MD
 Kathy Bull-Henry, MD, MBA
 James Canto, MD, MHS
 Angela Chang Chiu, MSN, RN
 Reezwana Chowdhury, MD
 Alisa Coker, MD
 Hilary Cosby, RN, CGRN
 Jacqueline Darmody, MSN, CRNP
 Sharon Dudley-Brown, PhD, CRNP
 Margo Dunlap, BSN, RN
 Sandy Fang, MD
 James Fritch, BSN, RN
 Susan Gearhart, MD
 Eduardo Gonzalez-Velez, MD
 Jeff Gould LAc, DiplAc, DiplCh
 Ekta Gupta, MD
 James Hamilton, MD
 Jin He, MD, PhD
 MaryRose Hess, RN, BSN, NCII
 Ihab Kamel, MD, PhD
 Amy Kim, MD
 Jacqueline Laurin, MD
 Jae Lee, MSN, CRNP
 Kathryn Lee-Young, MSN, CRNP
 Anne Marie Lennon, MD, PhD
 Leah Lewis-Garger, RN, MSN
 Margaret Malleis, BSN, RN
 Simon Mathews, MD
 Michael Marohn, DO
 Joanna Melia, MD
 Frances Meyer, MD
 Valerie Owens, MSN, CRNP
 Saowanee Ngamruengphong, MD
 Alyssa Parian, MD
 P. Jay Pasricha, MD
 Benjamin Philosophe, MD, PhD
 Bashar Safar, MBBS
 Florin Selaru, MD
 Kirti Shetty, MD
 Lisa Silva, BSN, RN
 Brindusa Truta, MD
 Hazel Veloso, MD
 Christi Walsh, MSN, CRNP
 Tam Warczynski, MSN, CRNP
 Elisheva Weiser, BSN, RN
 Shadi Yarandi, MD
 Atif Zaheer, MD

REGISTRATION

Course Number 80046131/14571

44th Annual Topics in Gastroenterology and Hepato-Biliary Update Conference

September 26-28, 2018

To Register: Online: <https://HopkinsCME.cloud-cme.com/aph.aspx?P=5&EID=14571>

By fax: (866) 510-7088 By phone: (410) 502-9636

Or mail this form to the Johns Hopkins University, Office of Continuing Medical Education, 720 Rutland Avenue, Room 20, Baltimore, Maryland 21205-2195. Include e-check or credit card information below.

FULL PAYMENT IS REQUIRED PRIOR TO THE START OF ACTIVITY.

I am a Johns Hopkins speaker for this activity.

PLEASE TYPE OR PRINT CLEARLY

last name		first name		m.i.	
highest degree	primary specialty		Hopkins faculty/staff only JHED ID		
For Physicians Only: NPI - 10 digits			State License #		State of License
ABIM#		Birth Month		Birth Day	
<input type="checkbox"/> I provide permission for my MOC completion information to be shared and transmitted to the Accreditation Council for Continuing Medical Education (ACCME).					
organization		mailing address			
city		state	ZIP	country	
daytime telephone		fax number			
e-mail (required)					

Check here if you wish to receive e-mail notices about upcoming CME activities.

I plan to stay at the Renaissance Harborplace Hotel in Baltimore, Maryland.

I plan to stay at the Residence Inn Baltimore in Baltimore, Maryland.

What do you hope to learn by attending this activity? _____

Please notify us if you have any special needs. _____

Registration Fees:

- Physicians \$550
- Residents*/Fellows*/Nurses/NPs/PAs/Allied Health Professionals (*with verification of status) \$125
- Nursing Session (Nurses/NPs - Thursday 9/27 Only) No Charge
- Advanced Practice Provider Session (Nurses/NPs/PAs - Friday 9/28 Only) No Charge

The registration fee includes instructional materials and food and beverage. For registrations received after 5:00 p.m. ET on September 21, 2018, include a \$50 late fee. On-site registrations are payable only by credit card.

Payment Type:

Total amount \$ _____

JHU Faculty/Staff Only: If you are using your Tuition Remission Benefit or an ION budget, please complete this registration form and return with appropriate payment processing form to OCME, Turner 20.

- TR Form: <http://benefits.jhu.edu/documents/trffacandstaff.pdf> ION Form: <http://hopkinscme.edu/migration/IonRequest.pdf>

e-Check: Routing Number: _____ Account Number: _____

Credit Card: VISA MASTERCARD DISCOVER AMEX

Card # _____ - _____ - _____ - _____ Exp. Date _____

Billing Zip Code _____ Security Code _____

Name on Card

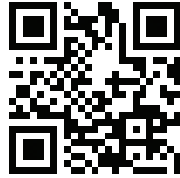
Signature and Date



JOHNS HOPKINS
MEDICINE

Office of Continuing Medical Education
720 Rutland Avenue / Turner 20
Baltimore, Maryland 21205-2195

44th Annual
Topics in Gastroenterology
and Hepato-Biliary
Update
September 26-28, 2018
Baltimore, Maryland



<https://HopkinsCME.cloud-cme.com /aph.aspx?P=5&EID=14571>

Nonprofit Org.
U.S. Postage
PAID
Bellmawr, NJ
Permit No. 2134