

Johns Hopkins Melanoma and
Cutaneous Oncology Program
presents

Update on Melanoma and Non-Melanoma Skin Cancer

Wednesday, May 16, 2018

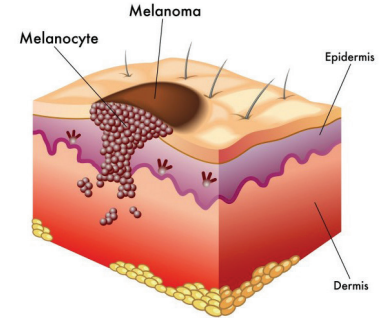
Buffet Dinner at 6:00 p.m.

Lectures from 6:30 to 10:00 p.m.

The Hotel at Arundel Preserve
7795 Arundel Mills Boulevard
Hanover, Maryland 21076

Description

In the United States, the incidence of skin cancer is greater than that of all other cancers combined. Early diagnosis of melanoma and other aggressive skin cancers can be lifesaving. Skin cancer is a substantial public health concern and is being increasingly diagnosed and managed by primary care physicians. This activity aims to update physicians with new information on diagnosis and treatment of melanoma and non-melanoma skin cancer. This activity will consist of a buffet dinner followed by a series of brief lectures and case presentations.



Who Should Attend

This activity is intended for dermatologists, internists, family physicians, surgeons, plastic surgeons, dermatologic surgeons, medical oncologists, radiation oncologists, oncology nurses, and physician assistants.

Accreditation Statement

The Johns Hopkins University School of Medicine is accredited by the Accreditation Council for Continuing Medical Education (ACCME) to provide continuing medical education for physicians.



CREDIT DESIGNATION STATEMENT

The Johns Hopkins University School of Medicine designates this live activity for a maximum of 3.5 AMA PRA Category 1 Credits™. Physicians should claim only the credit commensurate with the extent of their participation in the activity.



JOHNS HOPKINS
MEDICINE

Update on Melanoma and Non-Melanoma Skin Cancer

May 16, 2018



Johns Hopkins University School of Medicine
Turner 20, 720 Rutland Avenue
Baltimore, Maryland 21205-2195

Non-Profit Org.
U.S. Postage
PAID
Bellmawr, NJ
Permit No. 2134

ACTIVITY DIRECTOR

William Sharfman, MD, FACP

JOHNS HOPKINS SPEAKERS

Mary Beth Aronow, MD

Meg Gerstenblith, MD

Julie Lange, MD, ScM

Evan Lipson, MD

Inbal Sander, MD

Suzanne Topalian, MD

Anthony Tufaro, DDS, MD, FACS

LECTURE TOPICS INCLUDE:

- Melanoma Staging –AJCC Version 8
- Approach to the Dysplastic Nevus Patient
- Applying the MSLT-2 Trial Results
- Melanoma Surgery in Difficult Locations
- Update on Ocular Melanoma
- Adjuvant Therapy of High Risk Melanoma
- Integrating New Drugs in the Treatment of Advanced Melanoma
- Future Directions in Melanoma Research
- Case Presentations

TO REGISTER OR FOR FURTHER INFORMATION

Registration Fee: \$25

Register Online (credit card and eCheck):

<https://hopkinscme.cloud-cme.com/aph.aspx?P=5&EID=13551>

Register by Phone (credit card only)

(410) 502-9634

Register by Fax

(866) 510-7088

Confirmation/Certificates/Transcripts

(410) 502-9634

General Information

(410) 955-2959

E-mail the Office of CME

cmenet@jhmi.edu

Follow us on Twitter: <http://twitter.com/HopkinsCME>

Facebook: <http://www.facebook.com/HopkinsCME>



Check out our mobile app CloudCME.

Organization Code: **HopkinsCME**

For website and CloudCME mobile app technical difficulties, email:

cmetechsupport@jhmi.edu

