

New this Year!
Breakout session
for RN's, PA's,
and NP's

Johns Hopkins University School of Medicine
Division of Interventional Pulmonology
Presents

Eighth Annual Evaluation and Management of Pleural Disease

January 25-26, 2018



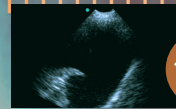
1910



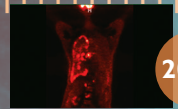
1930



1960



1990



2018

**Chevy Chase Bank Conference Center
The Sheikh Zayed Tower
and the
Minimally Invasive Surgical Training Center (MISTC Lab)
The Johns Hopkins Hospital
Baltimore, Maryland**



This course has been endorsed by
the American Thoracic Society.



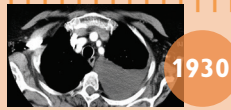
This course has been endorsed by
the World Association for Bronchology
and Interventional Pulmonology.



This activity has been approved for *AMA PRA Category 1 Credits™*.



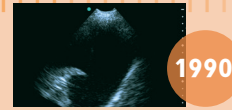
1910



1930



1960



1990



2018

Description

This activity is designed to educate the practicing pulmonologist and chest surgeon, as well as other health care professionals, interested in the care of patients with pleural disease. Participants will develop a comprehensive knowledge of the indications, contraindications and associated complications of common pleural procedures including thoracentesis, chest tube and indwelling pleural catheter placement, pleural biopsy and thoracoscopy. Procedures will be discussed in the didactic session on day one and will be demonstrated and practiced on day two at the hands-on stations on human cadavers in the MISTC Lab.

Who Should Attend

This activity is intended for pulmonologists and chest surgeons, nurses, nurse practitioners, physician assistants, as well as other health care professionals interested in the care of patients with pleural disease.

Objectives

After attending this activity, the participant will demonstrate the ability to:

- Interpret pleural pathophysiology.
- Discuss in detail the evaluation and management of patients with pleural effusion and pneumothorax.
- Use ultrasound to guide pleural intervention.

ACCREDITATION STATEMENT

The Johns Hopkins University School of Medicine is accredited by the Accreditation Council for Continuing Medical Education (ACCME) to provide continuing medical education for physicians.



CREDIT DESIGNATION STATEMENT

The Johns Hopkins University School of Medicine designates this live activity for a maximum of 12 *AMA PRA Category 1 Credits™*. Physicians should claim only the credit commensurate with the extent of their participation in the activity.

MOC STATEMENT

Successful completion of this CME activity, which includes participation in the evaluation component, enables the participant to earn up to 12 MOC points and patient safety MOC credit in the American Board of Internal Medicine's (ABIM) Maintenance of Certification (MOC) program. Participants will earn MOC points equivalent to the amount of CME credits claimed for the activity. It is the CME activity provider's responsibility to submit participant completion information to ACCME for the purpose of granting ABIM MOC credit.



OTHER CREDIT

American Academy of Nurse Practitioners National Certification Program accepts *AMA PRA Category 1 Credits™* from organizations accredited by the ACCME.

American Academy of Physician Assistants (AAPA) accepts certificates of participation for educational activities certified for *AMA PRA Category 1 Credits™* from organizations accredited by ACCME. Physician assistants may receive a maximum of 12 AAPA Category 1 CME credits for completing this program.

American Nurses Credentialing Center (ANCC) accepts *AMA PRA Category 1 Credits™* from organizations accredited by the ACCME.

The Johns Hopkins University has approved this activity for 12 **contact hours for non-physicians**.

PAIN MEDICINE STATEMENT

This activity should cover topics that are required under the Maryland Board of Physicians pain management requirement.

POLICY ON SPEAKER AND PROVIDER DISCLOSURE

It is the policy of the Johns Hopkins University School of Medicine that the speaker and provider globally disclose conflicts of interest. The Johns Hopkins University School of Medicine OCME has established policies in place that will identify and resolve all conflicts of interest prior to this educational activity. Detailed disclosure will be made in the instructional materials.

TO REGISTER or FOR FURTHER INFORMATION

Register Online	https://hopkinscme.cloud-cme.com/aph.aspx?P=5&EID=11421
Register by Phone	(410) 502-9634
Register by Fax	(866) 510-7088
Confirmation/Certificates/Transcripts	(410) 502-9634
General Information	(410) 955-2959
E-mail the Office of CME	cmenet@jhmi.edu

Follow us on Twitter: <http://twitter.com/HopkinsCME>
Facebook: <http://www.facebook.com/HopkinsCME>

For website and CloudCME mobile app technical difficulties, email: cmtechsupport@jhmi.edu

Sponsoring Division Website: www.hopkinsmedicine.org/IP

For general information, please visit the activity webpage at <https://hopkinscme.cloud-cme.com/aph.aspx?P=5&EID=11421>

CloudCME 

Check out our mobile app CloudCME.
Organization Code: HopkinsCME

Program

Thursday, January 25, 2018

Chevy Chase Bank Conference Center
The Sheikh Zayed Tower, The Johns Hopkins Hospital

7:45 - 8:30	Registration and Continental Breakfast
8:30 - 8:35	Welcome and Conference Goals David Feller-Kopman, MD, FCCP
8:35 - 9:00	Review of Pleural Anatomy and Physiology David Feller-Kopman, MD, FCCP
9:00 - 9:20	The Evaluation of Pleural Effusions: Does Light's Criteria Still Apply? Richard Light, MD
9:20 - 9:50	Ultrasound Guidance for Pleural Access Diana Yu, MD
9:50 - 10:05	Questions and Answers
10:05 - 10:25	Refreshment Break
10:25 - 10:45	Thoracentesis and Chest Tube Pearls Scott Stephens, MD
10:45 - 11:10	Medical Thoracoscopy Lonny Yarmus, DO, FCCP
11:10 - 11:50	VATS 101 Steven Yang, MD
11:50 - 12:00	Questions and Answers
12:00 - 1:00	Lunch
1:00 - 1:30	Parapneumonic Effusion and Empyema Errol Bush, MD
1:30 - 2:00	Management of Malignant Pleural Effusions Andrew Lerner, MD
2:00 - 2:25	Updates in Malignant Mesothelioma Joseph Friedberg, MD
2:25 - 2:40	Questions and Answers
2:40 - 3:00	Refreshment Break
3:00 - 3:25	Management of Unclear Exudates Hitesh Batra, MD
3:25 - 3:45	Management of Pneumothorax Majid Shafiq, MD
3:45 - 4:05	Pleural Disease Journal Club: The Year in Review David Feller-Kopman, MD, FCCP
4:05 - 4:20	Credentialing, Coding and Reimbursement Hans Lee, MD
4:20 - 4:30	Questions and Answers
4:30	Adjourn

Friday, January 26, 2018

Minimally Invasive Surgical Training Center (MISTC Lab)
Blalock Building, 12th Floor, The Johns Hopkins Hospital

8:00 - 8:30	Continental Breakfast
8:30 - 3:00	Hands-On Stations* (human cadavers) 30 min / station
	Station A: Semi-Rigid Thoracoscopy
	Station B: Rigid Thoracoscopy
	Station C: Tunneled Pleural Catheters
	Station D: Mid-level Breakout Session
	Station E: Tube Thoracostomy
	Station F: Intra-bronchial Valve
	Station G: Tunneled Pleural Catheter / Tube Thoracostomy
	Station H: VATS
	Station I: Ultrasound Simulator
	Station J: Meet the Professor
	Faculty:
	MD's: Hitesh Batra, MD, Stephen Broderick, MD, David Feller-Kopman, MD, FCCP, Hans Lee, MD, Andrew Lerner, MD, Richard Light, MD, Majid Shafiq, MD, Scott Stephens, MD, Lonny Yarmus, DO, FCCP, and Diana Yu, MD
	PA's: Jennifer Forti, PA-C, Victoria Gargon, PA, and David Lichtman, PA-C
	NP's: J. Patrick Balao, MSN, CRNP
	<i>*We will provide caps, masks, gloves and gowns for the lab. Participants are required to provide their own scrubs and proper footwear.</i>
12:00 - 12:45	Lunch
3:00	Adjourn

You will receive an email notification to complete the evaluation form and to attest to the number of hours in attendance.

The registration desk will remain open during conference hours

General Information

REGISTRATION

Thursday, January 25, 2018 • 7:45 a.m. – 8:30 a.m.

LOCATION

Thursday, January 25, 2018

Chevy Chase Bank Conference Center
The Sheikh Zayed Tower
The Johns Hopkins Hospital
1800 Orleans Street, Main Level
Baltimore, Maryland 21287

Friday, January 26, 2018

Minimally Invasive Surgical Training Center (MISTC Lab)
Blalock Building, 12th Floor
The Johns Hopkins Hospital
1800 Orleans Street
Baltimore, Maryland 21287

The Johns Hopkins Hospital is located on Orleans Street (Route 40) between Broadway and Wolfe Streets. Directions and campus parking information are available on our website under the Contact Us tab at <https://HopkinsCME.cloud-cme.com>. The closest public garage is the Orleans Street Garage, which is located across the skywalk from the main entrance to the hospital. Handicapped parking is also available in the Orleans Street Garage. Complimentary round-trip transportation for attendees staying at the conference headquarters hotel will be provided. *Johns Hopkins is smoke-free.*

FEES

Methods of Payment: We require full payment prior to the start of the activity. On-site payments by credit card only. The registration fee includes instructional materials, continental breakfasts, refreshment breaks and lunches.

Physicians Full Two-day Course (with Lab) [†]	\$1,095
Nurses/NPs/PAs/Allied Health Professionals Full Two-day Course (with Lab) [†]	\$595
Residents*/Fellows* Full Two-day Course (with Lab) [†]	\$495
Physicians Didactic Only (Day One).....	\$495
Nurses/NPs/PAs/Allied Health Professionals Didactic Only (Day One).....	\$395
Residents*/Fellows* Didactic Only (Day One).....	\$295

[†]Limit to 30 participants for Lab

*with verification of status

You will receive a confirmation by e-mail. If you have not received it by January 19, 2018, call (410) 502-9634 to confirm that you are registered. A transcript of attendance will be available upon attestation of your credit hours and submission of the post activity online evaluation.

The Johns Hopkins University reserves the right to cancel or postpone any activity due to unforeseen circumstances. In this event, the University will refund the registration fee but is not responsible for travel expenses. Additionally, we reserve the right to change the venue to a comparable venue. Under such circumstances registrants will be notified as soon as possible.

LATE FEE AND REFUND POLICY

A \$50 late fee applies to registrations received after 5 p.m. ET on **January 19, 2018**. A handling fee of \$50 will be deducted for cancellation. An additional fee may apply for cancellation of other events, including workshops and social activities. Refund requests must be received by fax or mail by **January 19, 2018**. No refunds will be made thereafter. Transfer of registration to another Johns Hopkins activity in lieu of cancellation is not possible.

SYLLABUS

The syllabus will be accessible online and via your mobile device in the CloudCME App prior to the activity.

HOW TO OBTAIN CREDIT

Post activity, an online evaluation will be available to attendees to evaluate the activity and individual presentations and to identify future educational needs. Upon completion of the evaluation, the learner must attest to the number of hours in attendance. Credits earned will be added to the learner's transcript and immediately available for print. The last day to access the evaluation and attest to your credits is **March 12, 2018**.

An outcome survey will be sent to all physician attendees within two months post activity to assist us in determining what impact this activity had on the learner's practice.

HOTEL AND TRAVEL INFORMATION

We strongly encourage you to book accommodations at the Renaissance Harborplace Hotel, which is the conference headquarters hotel. The Johns Hopkins Office of CME makes every effort to secure the best rate for overnight accommodations. The rate is part of a negotiated conference package that incorporates many services. By staying at the host hotel and booking within the room block, you help us maintain current conference benefits and keep future registration fees reasonable. Please consider this when making your overnight accommodations decision.

Renaissance Harborplace Hotel

202 East Pratt Street (410) 547-1200
Baltimore, Maryland 21202 FAX: (410) 539-5780
Marriott Reservations: (800) 468-3571
Web Site: www.renaissancehotels.com

HOTEL RESERVATION CUT-OFF DATE: JANUARY 3, 2018

A limited block of sleeping rooms has been reserved for your convenience and will be available on a first come, first served basis.

The Renaissance Harborplace Hotel is part of the waterfront complex of Harborplace, and only steps away from the many attractions of Baltimore's Inner Harbor. Make your reservation online at <https://aws.passkey.com/e/49365920> or call the hotel directly and specify that you are attending the Johns Hopkins Pleural Disease conference to receive the special group rate of \$159, single or double, plus tax. Complimentary roundtrip transportation will be provided. On-site parking is available at the hotel at an additional charge. Check-in time is 4:00 p.m. Check-out time is 12:00 p.m.

EMERGENCY CALLS

On January 25, 2018, direct emergency calls to the Hopkins registration desk, (443) 287-5426.

On January 26, 2018, direct emergency calls to the MISTC Lab, (443) 287-2334.

Messages will be posted for participants.

AMERICANS WITH DISABILITIES ACT

The Johns Hopkins University School of Medicine fully complies with the legal requirements of the ADA and the rules and regulations thereof. *Please notify us if you have any special needs.*

ACKNOWLEDGEMENT

Applications for commercial support from health care related industries are pending. A complete list of contributors will be provided in the syllabus. Please note that commercial support received is solely for the educational component of the activity and will not be used to provide food and beverage.

Please note: The Physician Payments Sunshine Act was enacted by Congress to increase public awareness of financial relationships between drug and medical device manufacturers and physicians. In compliance with the requirements of this Act, the commercial supporter/s of this activity may require the Johns Hopkins University School of Medicine to report certain professional information (such as name, address, National Provider Identifier (NPI), and State License number) of physician attendees who receive complimentary food and beverage in conjunction with a CME activity. The commercial supporter is required to submit the collected data to the Centers for Medicare and Medicaid Services which will then publish the data on its website.

SAVE THE DATE

EBUS and Advanced Diagnostic Bronchoscopy: The Seventh Year

July 25-27, 2018

Hyatt Regency Chesapeake Bay
Cambridge, Maryland

<https://hopkinscme.cloud-cme.com/aph.aspx?P=5&EID=11444>

ACTIVITY DIRECTOR

David Feller-Kopman, MD, FCCP

Professor of Medicine, Anesthesiology and Critical Care Medicine, and Otolaryngology – Head and Neck Surgery
Director, Interventional Pulmonology

HOPKINS SPEAKERS

J. Patrick Balao, MSN, CRNP

Nurse Practitioner
Division of Pulmonary and Critical Care Medicine
Interventional Pulmonology

Hitesh Batra, MD

Instructor of Medicine

Stephen Broderick, MD

Assistant Professor of Surgery
Health Information Management Department
Sibley Memorial Hospital
Washington, DC

Errol Bush, MD

Assistant Professor of Surgery
Surgical Director, Advanced Lung Disease and Lung Transplant Program

Jennifer Forti, PA-C

Physician Assistant Manager
Division on Pulmonary and Critical Care Medicine

Victoria Gargon, PA

Physician Assistant
Division of Pulmonary and Critical Care Medicine

Hans Lee, MD

Associate Professor of Medicine
Director, Pleural Disease Services
Director, Wang Interventional Pulmonary Fellowship

Andrew Lerner, MD

Instructor of Medicine
Director, Interventional Pulmonology
Health Information Management Department
Sibley Memorial Hospital
Washington, DC

David Lichtman, PA-C

Instructor of Medicine

Majid Shafiq, MD

Instructor of Medicine

Scott Stephens, MD

Assistant Professor of Medicine
Director, Oncology and Bone Marrow Transplant Critical Care

Stephen Yang, MD

Professor of Surgery
Associate Vice Chair, Faculty Development

Lonny Yarmus, DO, FCCP

Associate Professor of Medicine and Oncology
Clinical Chief, Division of Pulmonary and Critical Care Medicine
Johns Hopkins University School of Medicine
Director, Interventional Pulmonary Research Core
Johns Hopkins Bayview Medical Center

Diana Yu, MD

Clinical Instructor of Medicine

GUEST SPEAKERS

Joseph Friedberg, MD

Charles Reid Edwards Professor of Surgery
Director, Mesothelioma and Thoracic Oncology Center
University of Maryland School of Medicine
Thoracic Surgeon-in-Chief
University of Maryland Medical System
Baltimore, Maryland

Richard Light, MD

Professor of Medicine
Vanderbilt University Medical Center
Nashville, Tennessee

Registration Form

Course Number 80044456 / EID 11421

Eighth Annual Evaluation and Management of Pleural Disease

January 25 - 26, 2018

To Register: Online: <https://hopkinscme.cloud-cme.com/aph.aspx?P=5&EID=11421> Phone: (410) 502-9634 Fax: (866) 510-7088

Or mail this form to the Johns Hopkins University, Office of Continuing Medical Education, 720 Rutland Avenue, Turner 20, Baltimore, Maryland 21205-2195. Include e-check or credit card information below.

FULL PAYMENT IS REQUIRED PRIOR TO THE START OF ACTIVITY.

I am a Johns Hopkins speaker for this activity.

Please type or print clearly:

last name		first name		m.i.	
highest degree	primary specialty			Hopkins faculty/staff only JHED ID	
For Physicians Only: NPI – 10 digits		State License #		State of License	
mailing address					
city		state	ZIP	country	
daytime telephone		fax number			
e-mail (required)					

Check here if you wish to receive e-mail notices about upcoming CME activities.

I plan to stay at the Renaissance Harborplace Hotel in Baltimore, Maryland.

What do you hope to learn by attending this activity? _____

Please notify us if you have any special needs. _____

Registration Fees:

- Physicians** – Full Two-day Course (with Lab)[†] \$1,095
- Nurses/NPs/PAs/Allied Health Professionals**
– Full Two-day Course (with Lab)[†] \$595
- Residents*/Fellows*** – Full Two-day Course (with Lab)[†] \$495
- Physicians** – Didactic Only (Day One) \$495
- Nurses/NPs/PAs/Allied Health Professionals**
– Didactic Only (Day One) \$395
- Residents*/Fellows*** – Didactic Only (Day One) \$295

[†]Limit to 30 participants for Lab *with verification of status

The registration fee includes instructional materials and food and beverage. For registrations received after 5:00 p.m. ET on January 19, 2018, include a \$50 late fee. On-site registrations are payable only by credit card.

Payment Type: Total amount \$ _____

JHU Faculty/Staff Only: If you are using your Tuition Remission Benefit or an ION budget, please upload your fully completed and approved form in the payment section of the online activity link above.

- TR Form: <http://benefits.jhu.edu/documents/trffacandstaff.pdf>
- ION Form: <http://hopkinscme.edu/migration/IonRequest.pdf>

e-Check Routing #: _____ Account #: _____

Credit Card: VISA MASTERCARD DISCOVER AMEX

Card # _____ - _____ - _____ - _____ Exp. Date _____

Billing Zip Code _____ Security Code _____

Name on Card

Signature and Date