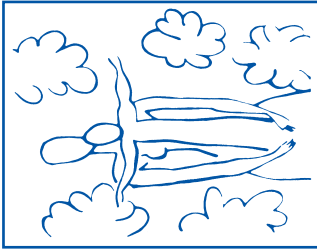


**The Spectrum of
Developmental Disabilities XL:
The New Genetics: Implications for
Neurodevelopmental Disabilities**



March 19-21, 2018
Johns Hopkins University
School of Medicine
Baltimore, Maryland



Mark Your Calendar for
Spectrum of Developmental Disabilities XLI
March 18 - 20, 2019

Non-Profit Org.
U.S. Postage
PAID
Baltimore, MD
Permit No. 5839

GENERAL INFORMATION

DESCRIPTION

Genetics has rapidly become integral to the evaluation and treatment of a wide variety of neurodevelopmental disabilities. Modern techniques now allow identification of genetic etiologies in as many as 40% of patients with developmental disabilities. The potential benefits in identifying comorbidities, prognostication, and counseling are clear; the American Academy of Pediatrics, American Academy of Neurology, and American College of Medical Genetics all now recommend high-resolution chromosomal microarray testing as first-line evaluation for intellectual disability and autism spectrum disorder. Regardless, there remain significant financial and practical barriers to obtaining this testing. Further, output of these complex tests produce results that can be unexpected and difficult to interpret even for experienced clinicians. Many non-genetics clinicians do not feel equipped to interpret results and articulate a need for further education. The advent and gaining utilization of even higher-resolution techniques such as whole-exome and whole-genome sequencing will further compound this problem over coming years.

Once a genetic variant is identified, incorporating rapidly evolving information from testing into comprehensive care and counseling remains challenging. The number of recognized contributing variants is rapidly growing. In order to make use of the wealth of data now available and to realize the promise of individualized medicine, clinicians must become familiar with the tools and concepts needed to navigate the new genetic information landscape.

WHO SHOULD ATTEND

This activity is intended for pediatricians, genetic counselors, neuro-developmentalists, developmental behavioral pediatricians, child neurologists, child psychiatrists, educators, nurses, nurse practitioners, occupational therapists, psychologists, speech language pathologists, physical therapists, physician assistants and social workers.

OBJECTIVES

After attending this activity, the participant will demonstrate the ability to:

- Identify and obtain appropriate genetic testing for children with developmental disabilities.
- Interpret genetic testing using current research results.
- Counsel patients and families regarding results and implications of genetic testing.
- Critically evaluate emerging targeted therapies.

ACCREDITATION STATEMENT

This activity has been planned and implemented in accordance with the accreditation requirements and policies of the Accreditation Council for Continuing Medical Education (ACCME) through the joint providership of Johns Hopkins University School of Medicine and Kennedy Fellows Association. The Johns Hopkins University School of Medicine is accredited by the ACCME to provide continuing medical education for physicians.

CREDIT DESIGNATION STATEMENT

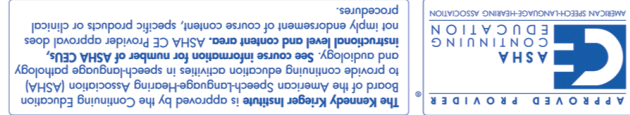
The Johns Hopkins University School of Medicine designates this live activity for a maximum of 18.25 AMA PRA Category 1 Credits™. Physicians should claim only the credit commensurate with the extent of their participation in the activity.

MAINTENANCE OF CERTIFICATION

The American Board of Psychiatry and Neurology has reviewed The Spectrum of Developmental Disabilities XL: The New Genetics: Implications for Neurodevelopmental Disabilities and has approved this program as part of a comprehensive self-assessment program, which is mandated by the ABMS as a necessary component of Maintenance of Certification.

OTHER CREDIT

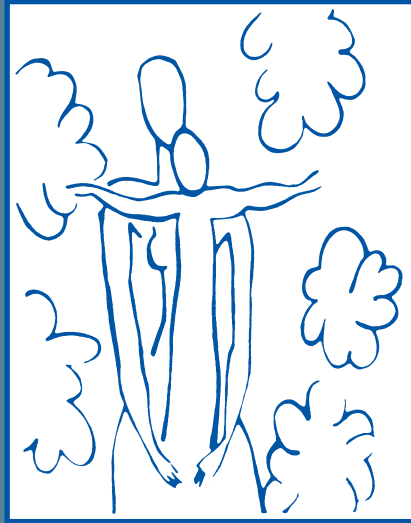
This program is offered for up to 1.8 ASHA CEUs (Various level: Professional area)



CONTINUING MEDICAL EDUCATION

The 40th Annual

**The Spectrum of
Developmental Disabilities XL:
The New Genetics: Implications for
Neurodevelopmental Disabilities**



March 19-21, 2018
Johns Hopkins University School of Medicine
Thomas B. Turner Building
Baltimore, Maryland

Jointly Provided by Johns Hopkins University School of Medicine
Division of Child Development, Department of Pediatrics
and
Kennedy Fellows Association
Kennedy Krieger Institute

This activity has been approved for *AMA PRA Category 1 Credits™*.

American Nurses Credentialing Center (ANCC) accepts AMA PRA Category 1 Credits™ from organizations accredited by the ACCME.

American Academy of Nurse Practitioners National Certification Program accepts *AMA PRA Category 1 Credits™* from organizations accredited by the ACCME.

American Academy of Physician Assistants (AAPA) accepts certificates of participation for educational activities certified for *AMA PRA Category 1 Credits™* from organizations accredited by ACCME.

The Johns Hopkins University School of Medicine is authorized by the **Maryland State Board of Examiners of Psychologists** as a provider of continuing education. The Johns Hopkins University School of Medicine maintains responsibility for this program. A certificate for 18.25 CEUs will be awarded upon completion of this activity. The **Maryland Board of Social Work Examiners** certifies that this program meets the criteria for 18.25 credit hours of Category 1 or 1.8 CEUs of continuing education for social workers and associates licensed in Maryland. The Johns Hopkins University School of Medicine is an approved sponsor of the Maryland Board of Social Work Examiners for continuing education credits for licensed social workers in Maryland.

This event has been submitted to the **National Society of Genetic Counselors (NSGC)** for approval of Category 1 CEUs. The American Board of Genetic Counseling (ABGC) accepts CEUs approved by NSGC for purposes of recertification. Approval for the requested CEUs and Contact Hours is currently pending.

The Johns Hopkins University has approved this activity for **18.25 contact hours for non-physicians**.

POLICY ON SPEAKER AND PROVIDER DISCLOSURE

It is the policy of the Johns Hopkins University School of Medicine that the speaker and provider globally disclose conflicts of interest. The Johns Hopkins University School of Medicine OCME has established policies in place that will identify and resolve all conflicts of interest prior to this educational activity. Detailed disclosure will be made in the instructional materials.

REGISTRATION

Monday, March 19, 2018 • 8:00 – 8:45a.m.

LOCATION

Thomas B. Turner Building, Johns Hopkins University School of Medicine,

720 Rutland Avenue, Baltimore, Maryland 21205

The Turner Building is located on Rutland Avenue at Monument Street. Directions and campus parking information are available on our website under the Contact Us tab at <https://HopkinsCME.cloud-cme.com>. Handicapped parking is available in the nearby Rutland Garage. Complimentary round-trip transportation for attendees staying at conference headquarters hotel will be provided. Johns Hopkins is smoke-free.

FEES

Registration Fee\$35
Printed Syllabus.....\$45

You will receive a confirmation by e-mail. If you have not received it by March 13, 2018, call (410) 502-9634 to confirm that you are registered. A transcript of attendance will be available upon attestation of your credit hours and submission of the post activity online evaluation.

The Johns Hopkins University reserves the right to cancel or postpone any activity due to unforeseen circumstances. In this event, the University will refund the registration fee but is not responsible for travel expenses. Additionally, we reserve the right to change the venue to a comparable venue. Under such circumstances registrants will be notified as soon as possible.

LATE FEE AND REFUND POLICY

A \$50 late fee applies to registrations received after 5:00 p.m. ET on **March 13, 2018**. A handling fee of \$50 will be deducted for cancellation. An additional fee may apply for cancellation of other events, including workshops and social activities.

TO REGISTER OR FOR FURTHER INFORMATION

Register Online: <https://hopkinscme.cloud-cme.com/aph.aspx?P=5&EID=1139>

Register by Phone (410) 502-9634
Register by Fax (866) 510-7088
Confirmation/Certificates/Transcripts (410) 502-9634
General Information (410) 955-2959
E-mail the Office of CME cmecent@jhmi.edu

Follow us on Twitter: <https://twitter.com/HopkinsCME>
Facebook: <https://www.facebook.com/HopkinsCME>



Check out our mobile app CloudCME. Organization Code: **HopkinsCME**
For website and CloudCME mobile app technical difficulties, email: cmecchspport@jhmi.edu
For general information, please visit the activity webpage at <https://hopkinscme.cloud-cme.com/aph.aspx?P=5&EID=1139>

EMERGENCY CALLS

On March 19-21, 2018, direct emergency calls to the Hopkins registration desks, (410) 955-3673. Messages will be posted for participants.

AMERICANS WITH DISABILITIES ACT

The Johns Hopkins University School of Medicine and Kennedy Fellows Association fully comply with the legal requirements of the ADA and the rules and regulations thereof. *Please notify us if you have any special needs.*

REGISTER OR FOR FURTHER INFORMATION

Register Online: <https://hopkinscme.cloud-cme.com/aph.aspx?P=5&EID=1139>

Register by Phone (410) 502-9634
Register by Fax (866) 510-7088
Confirmation/Certificates/Transcripts (410) 502-9634
General Information (410) 955-2959
E-mail the Office of CME cmecent@jhmi.edu

Follow us on Twitter: <https://twitter.com/HopkinsCME>
Facebook: <https://www.facebook.com/HopkinsCME>



Check out our mobile app CloudCME. Organization Code: **HopkinsCME**
For website and CloudCME mobile app technical difficulties, email: cmecchspport@jhmi.edu
For general information, please visit the activity webpage at <https://hopkinscme.cloud-cme.com/aph.aspx?P=5&EID=1139>

PROGRAM				
Monday, March 19, 2018				
<i>Morning</i>				
8:00 - 8:45	Registration and Continental Breakfast	4:05 - 4:50	Genetic Counseling for NDD in an Evolving Theoretical Landscape Brenda Finucane, MS, LGC	3:25 - 4:10
8:45 - 9:00	Welcome with Conference Goals Bruce Shapiro, MD, Tina Cheng, MD, MPH and Gary Goldstein, MD	4:50 - 5:10	Questions and Answers All Afternoon Faculty	4:10 - 4:55
FOUNDATIONS				
<i>Moderator: Brian Rogers, MD</i>				
9:00 - 9:40	Genetics of NDD: It's Not as Simple as it Used to Be S. Ali Fatemi, MD	5:10 - 6:00	Welcome Reception	4:55 - 5:25
9:40 - 10:20	Genomics: Gateway to Individualized Medicine Jonathan Pevsner, PhD	Tuesday, March 20, 2018		
10:20 - 10:40	Refreshment Break	<i>Morning</i>		
10:40 - 11:25	Genetics of Motor Disability: From DCD to CP Michael Krueer, MD	8:00 - 8:30	Continental Breakfast	NEURODEVELOPMENTAL DISORDERS: GENETIC UNDERPINNINGS
11:25 - 12:10	Newborn Screening in the Era of Medical Genomics Nicholas Katsanis, PhD	8:30 - 9:20	Epigenetics, Complex Traits, and Environment Hans Bjornsson, MD	<i>Moderator: Mary Leppert, MB, BCh</i>
12:10 - 12:30	Questions and Answers All Morning Faculty	9:20 - 10:10	The Genetics of Epilepsy Ingo Helbig, MD	9:20 - 4:55
12:30 - 1:30	Lunch	10:10 - 10:30	Refreshment Break	4:55 - 5:25
<i>Afternoon</i>				
CLINICAL APPROACHES TO ETIOLOGY				
<i>Moderator: Thomas Lock, MD</i>				
1:30 - 2:15	Autism Behavioral and Endophenotypes: Relevance for Specific Behavioral Treatment Strategies Travis Thompson, PhD	10:30 - 11:15	What Have We Learned From Syndromic Autism? Eric Morrow, MD, PhD	9:15 - 10:00
2:15 - 3:00	A Staged Evaluation to the Child With Developmental Delay Kristin Baranano, MD, PhD	10:30 - 11:15	NDD Genetics: Molecular Pathways and Therapeutic Potential Michael V. Johnston, MD	10:00 - 10:40
3:00 - 3:20	Refreshment Break	11:15 - 12:00	Questions and Answers All Morning Faculty	10:40 - 11:00
3:20 - 4:05	Unexpected Findings, Unknown Significance and Informed Consent Julie S. Cohen, ScM, CGC	12:00 - 12:30	Lunch	11:00 - 11:45
<i>Afternoon</i>				
NEW GENOMICS, OLD PHENOMICS				
<i>Moderator: Scott Myers, MD</i>				
1:30 - 2:15	Fragile X: Linking the Clinical Manifestations Walter Kaufmann, MD	12:30 - 1:30	Lunch	11:45 - 12:30
2:15 - 3:05	Down Syndrome: A Lifespan Approach George Capone, MD	<i>Afternoon</i>		
3:05 - 3:25	Refreshment Break	WEDNESDAY, MARCH 21, 2018		
<i>Morning</i>				
8:00 - 8:30 Continental Breakfast				
CURE VS. MANAGEMENT: THE POTENTIAL OF GENETICS				
<i>Moderator: Paul Lipkin, MD</i>				
8:30 - 9:15 Hooking Up: Parent Support for Genetic and Rare Disorders Sonal Desai, MGC, CGC				
9:15 - 10:00 What's a Primary Care Provider to Do? Joann Bodurtha, MD, MPH				
10:00 - 10:40 Tuberous Sclerosis Complex and Epilepsy: What's Next? Kevin Ess, MD, PhD				
10:40 - 11:00 Refreshment Break				
11:00 - 11:45 Therapeutic Approaches to Genetic Disorders: Symptomatic, Ameliorative, Curative Andrea Gropman, MD				
11:45 - 12:30 The Kallikaks and the Jukes Pasquale J. Accardo, MD				
12:30 - 1:00 Questions and Answers All Morning Faculty				
1:00 Adjourn				
You will receive an email notification to complete the evaluation form and to attest to the number of hours in attendance.				
The registration desk will remain open during conference hours.				
<i>The Johns Hopkins University School of Medicine takes responsibility for the content, quality and scientific integrity of this CME activity. This schedule is subject to change.</i>				

ACTIVITY DIRECTOR

Bruce Shapiro, MD
Vice President of Training
Kennedy Krieger Institute
Arnold J. Capute MD, MPH Chair in Neurodevelopmental Disabilities
Professor of Pediatrics
Johns Hopkins University School of Medicine

JOHNS HOPKINS AND KENNEDY KRIEGER FACULTY

Kristin Baranano, MD, PhD
Assistant Professor of Neurology
Johns Hopkins University School of Medicine

Hans Bjornsson, MD
Assistant Professor of Pediatrics and Genetics
Johns Hopkins University School of Medicine

Joann Bodurtha, MD, MPH
Professor of Pediatrics
McKusick-Nathans Institute of Genetic Medicine
Johns Hopkins University School of Medicine

George Capone, MD
Director, Down Syndrome Clinic
Kennedy Krieger Institute
Associate Professor of Pediatrics
Johns Hopkins University School of Medicine

Tina Cheng, MD, MPH
Director, Department of Pediatrics
Given Foundation Professor of Pediatrics
Johns Hopkins University School of Medicine
Professor of Population, Family and Reproductive Health
Johns Hopkins Bloomberg School of Public Health
Pediatrician-in-Chief
The Johns Hopkins Hospital

Julie S. Cohen, ScM, CGC
Certified Genetic Counselor
Kennedy Krieger Institute

Anne Comi, MD
Director, Hunter Nelson Sturge-Weber Center
Associate Professor Neurology and Pediatrics
Johns Hopkins University School of Medicine

Sonal Desai, MGC, CGC
Genetic Counselor
Kennedy Krieger Institute

S. Ali Fatemi, MD
Director, Division of Neurogenetics and Moser Center for Leukodystrophies
Kennedy Krieger Institute
Associate Professor of Neurology and Pediatrics
Johns Hopkins University School of Medicine

Gary Goldstein, MD
President and Chief Executive Officer
Kennedy Krieger Institute
Professor of Neurology and Pediatrics
Johns Hopkins University School of Medicine

Michael V. Johnston, MD
Blum Moser Chair for Pediatric Neurology
Executive Vice President and Chief Medical Officer
Kennedy Krieger Institute
Professor, Neurology, Pediatrics and Physical Medicine and Rehabilitation
Johns Hopkins University School of Medicine

Mary Leppert, MB, BCh
Director, Center for Development and Learning
Kennedy Krieger Institute
Assistant Professor of Pediatrics
Johns Hopkins University School of Medicine

Paul Lipkin, MD
Director, Medical Informatics and Interactive Autism Network
Kennedy Krieger Institute
Associate Professor of Pediatrics
Johns Hopkins University School of Medicine

Jonathan Pevsner, PhD
Professor of Psychiatry and Behavioral Sciences
Johns Hopkins University School of Medicine

GUEST SPEAKERS

Pasquale J. Accardo, MD
James H. Franklin Professor of Developmental Research in Pediatrics
Virginia Commonwealth University

Kevin Ess, MD, PhD
Associate Professor of Pediatrics and Neurology
Gerald M. Fenichel Chair in Neurology
Director, Pediatric Neurology
Vanderbilt University Medical Center

Brenda Finucane, MS, LGC
Associate Director and Professor
Autism and Developmental Medicine Institute
Geisinger Health System

Andrea Gropman, MD
Professor of Neurology and Pediatrics
The George Washington University School of Medicine and Health Sciences
Division Chief, Neurodevelopmental Disabilities and Neurogenetics
Children's National Health System

David H. Gutmann, MD, PhD
Donald O. Schnuck Family Professor
Vice Chairman for Research Affairs
Department of Neurology
Director, Neurofibromatosis Center
Washington University School of Medicine

Ingo Helbig, MD
Assistant Professor of Neurology and Pediatrics
Perelman School of Medicine
University of Pennsylvania and Children's Hospital of Philadelphia

Nicholas Katsanis, PhD
Professor, Department of Cell Biology
Director, Center for Human Disease Modeling
Duke University School of Medicine

Walter Kaufmann, MD
Director, Center for Translational Research
Ravenel Boykin Curry Chair in Genetic Therapeutics
Professor of Neurology
Greenwood Genetic Center
Research Professor of Pediatrics
University of South Carolina School of Medicine
Adjunct Professor of Human Genetics
Emory University School of Medicine

Michael Krueer, MD
Director, Pediatric Movement Disorders Program Barrow Neurological Institute, Phoenix Children's Hospital
Associate Professor, Child Health, Cellular and Molecular Medicine, Neurology, and Genetics
University of Arizona College of Medicine Phoenix

Thomas Lock, MD
Professor of Clinical Pediatrics
Director, Section of Developmental Pediatrics
Indiana University School of Medicine
Riley Hospital for Children

Eric Morrow, MD, PhD
Associate Professor of Molecular Biology, Cell Biology and Biochemistry and Psychiatry and Human Behavior
Brown University

Scott Myers, MD
Clinical Associate
Professor of Pediatrics
Temple University School of Medicine
Neurodevelopmental Pediatrician
Autism and Developmental Medicine Institute
Geisinger Health System

Brian Rogers, MD
Professor of Pediatrics
Director, Institute on Development and Disability
Oregon Health and Science University

Travis Thompson, PhD
Professor of Educational Psychology
University of Minnesota

REGISTRATION FORM

Course Number 80044117/11139

The Spectrum of Developmental Disabilities XL • The New Genetics: Implications for Neurodevelopmental Disabilities • March 19-21, 2018

To Register: Online: <https://hopkinscme.cloud-cme.com/aph.aspx?P=5&EID=11139>

Fax: (866) 510-7088 Phone: (410) 502-9634

Or mail this form to the Johns Hopkins University, Office of Continuing Medical Education, 720 Rutland Avenue, Turner Room 20, Baltimore, Maryland 21205-2195. Include e-check or credit card information below.

FULL PAYMENT IS REQUIRED PRIOR TO THE START OF ACTIVITY.

I am a Johns Hopkins speaker for this activity.

Please type or print clearly:

last name		first name	m.i.	
highest degree	primary specialty		Hopkins faculty/staff only JHED ID	
For Physicians Only:	NPI - 10 digits	State License #	State of License	
mailing address				
city	state	ZIP + 4 code	country	
daytime telephone	fax number			
e-mail (required field)				

Check here if you wish to receive e-mail notices about upcoming CME activities.

I plan to stay at the Homewood Suites by Hilton in Baltimore, Maryland.

What do you hope to learn by attending this activity? _____

Please notify us if you have any special needs. _____

Registration Fee: \$545

Printed Syllabus:..... \$35

The registration fee includes instructional materials and food and beverage. For registrations received after 5:00 p.m. ET on March 13, 2018, include a \$50 late fee. On-site registrations are payable only by credit card.

Total amount \$ _____

Payment Type:

JHU Faculty/Staff Only: If you are using your Tuition Remission Benefit or an ION budget, please upload your fully completed and approved form in the payment section of the online activity link above.
 TR Form: <http://benefits.jhu.edu/documents/trffacandstaff.pdf>
 ION Form: <http://hopkinscme.edu/migration/IonRequest.pdf>

e-Check: Routing Number: _____ Account Number: _____

Credit Card: VISA MASTERCARD DISCOVER AMEX

Card # _____ - _____ - _____ - _____ Exp. Date _____

Billing Zip Code _____ Security Code _____

Name on Card _____

Signature and Date _____