

Department of Medicine at  
Johns Hopkins University  
School of Medicine and  
Johns Hopkins Bayview Medical Center  
*presents*

12th Annual

# Infectious Diseases Update

for Primary Care and  
Hospital Medicine

**May 14-15, 2018**

Thomas B. Turner Building  
Johns Hopkins University School of Medicine  
Baltimore, Maryland

This activity has been approved for *AMA PRA Category 1 Credits™*.



JOHNS HOPKINS  
MEDICINE

## DESCRIPTION

Infectious diseases remains a dynamic and fascinating field replete with new challenges facing outpatient primary care providers and hospital medicine practitioners alike. The past few years have seen substantial advances in our understanding of microorganisms, including their pathogenicity and the ways in which they interact with human hosts. With the benefit of ever-evolving diagnostic tools, we are better able to identify culprit pathogens – and then use the optimal agents for treatment.

These approaches to care are reflected in updated guidelines and clinical pathways that impact generalist providers, who have limited time and resources to access expert information in infectious diseases.

### Who Should Attend

This activity is intended for emergency medicine physicians, family practitioners, internists, public health practitioners, hospitalists, nurses, nurse practitioners, and physician assistants.

### Objectives

- After attending this activity, the participant will demonstrate the ability to:
- Describe the indications for HIV pre-exposure prophylaxis (PrEP) and name the medications recommended for this purpose.
  - Name the first-line agents for treatment of hepatitis C virus infection and recognize indications for referral to a specialist for co-management.
  - Discuss the different clinical manifestations of Lyme disease and the recommended testing and treatment for each.
  - Formulate a plan for the initial evaluation and management of patients with fever and rash.
  - Distinguish patients with genuine antibiotic allergies from those likely to be able to safely use the antibiotic in question.
  - Determine the necessary length of antibiotic treatment for common infections.
  - Recall the appropriate test to order to diagnose common sexually-transmitted infections, and then identify the optimal therapy for each.

## GENERAL INFORMATION

### Registration

Monday, May 14, 2018 • 7:00 a.m.

### Location

**Thomas B. Turner Building**  
Johns Hopkins University School of Medicine  
720 Rutland Avenue  
Baltimore, Maryland 21205

The Turner Building is located on Rutland Avenue at Monument Street. Directions and campus parking information are available on our website under the Contact Us tab at <https://HopkinsCME.cloud-cme.com>. Handicapped parking is available in the nearby Rutland Garage. Complimentary round-trip transportation for attendees staying at conference headquarters hotel will be provided. **Johns Hopkins is smoke-free.**

### Fees

**Methods of Payment:** We require full payment prior to the start of the activity. On-site payments by credit card only. The registration fee includes instructional materials, continental breakfasts, refreshment breaks and lunches.

Physicians .....	\$395
Residents*/Fellows*/Nurses/Nurse Practitioners/	
Physician Assistants/Allied Health Professionals.....	\$320
*with verification of status	

You will receive a confirmation by e-mail. If you have not received it by May 8, 2018, call (410) 502-9634 to confirm that you are registered. A transcript of attendance will be available upon attestation of your credit hours and submission of the post activity online evaluation.

- Decide when patients should receive treatment for a proposed diagnosis of Clostridium difficile colitis.
- Formulate a plan for the initial evaluation and management of patients with diabetic foot infections.
- Decide when patients should receive treatment for a proposed diagnosis of urinary tract infection.
- Formulate a plan for the initial evaluation and management of patients with rhinosinusitis.

### Accreditation Statement

The Johns Hopkins University School of Medicine is accredited by the Accreditation Council for Continuing Medical Education (ACCME) to provide continuing medical education for physicians.



### Credit Designation Statement

The Johns Hopkins University School of Medicine designates this live activity for a maximum of 16.75 AMA PRA Category 1 Credits™. Physicians should claim only the credit commensurate with the extent of their participation in the activity.

### MOC Statement

Successful completion of this CME activity, which includes participation in the evaluation component, enables the participant to earn up to 16.75 MOC points and patient safety MOC credit in the American Board of Internal Medicine's (ABIM) Maintenance of Certification (MOC) program. Participants will earn MOC points equivalent to the amount of CME credits claimed for the activity. It is the CME activity provider's responsibility to submit participant completion information to ACCME for the purpose of granting ABIM MOC credit.



The Johns Hopkins University reserves the right to cancel or postpone any activity due to unforeseen circumstances. In this event, the University will refund the registration fee but is not responsible for travel expenses. Additionally, we reserve the right to change the venue to a comparable venue. Under such circumstances registrants will be notified as soon as possible.

### Late Fee and Refund Policy

A \$50 late fee applies to registrations received after 5:00 p.m. EST on May 8, 2018. A handling fee of \$50 will be deducted for cancellation. An additional fee may apply for cancellation of other events, including workshops and social activities. Refund requests must be received by fax or mail by May 8, 2018. No refunds will be made thereafter. Transfer of registration to another Johns Hopkins activity in lieu of cancellation is not possible.

### Syllabus

The syllabus will be accessible online and via your mobile device in the CloudCME App prior to the activity.

### Hotel and Travel Information

We strongly encourage you to book your accommodations at the Residence Inn Baltimore at The Johns Hopkins Medical Campus, which is the conference headquarters hotel. The Johns Hopkins Office of CME makes every effort to secure the best rate for overnight accommodations. The rate is part of a negotiated conference package that incorporates many services. By staying at the host hotel and booking within the room block, you help us maintain current conference benefits and keep future registration fees reasonable. Please consider this when making your overnight accommodations decision.

#### Residence Inn Baltimore at The Johns Hopkins Medical Campus

800 North Wolfe Street  
Baltimore, Maryland 21205

(443) 524-8400

Website: <http://tinyurl.com/jczwrohd>

### Other Credits

Application for CME credit has been filed with the **American Academy of Family Physicians**. Determination of credit is pending.

**American Academy of Nurse Practitioners National Certification Program (AANP)** accepts *AMA PRA Category 1 Credit™* from organizations accredited by the ACCME.

**American Academy of Physician Assistants (AAPA)** accepts certificates of participation for educational activities certified for *AMA PRA Category 1 Credit™* from organizations accredited by ACCME. Physician assistants may receive a maximum of 16.75 AAPA Category 1 CME credit(s) for completing this program.

**American Nurses Credentialing Center (ANCC)** accepts *AMA PRA Category 1 Credit™* from organizations accredited by the ACCME.

### Contact Hours for Non-Physicians

The Johns Hopkins University has approved this activity for 16.75 contact hours for non-physicians.

### Policy on Speaker and Provider Disclosure

It is the policy of the Johns Hopkins University School of Medicine that the speaker and provider globally disclose conflicts of interest. The Johns Hopkins University School of Medicine OCME has established policies in place that will identify and resolve all conflicts of interest prior to this educational activity. Detailed disclosure will be made in the instructional materials.

### HOTEL RESERVATION CUT-OFF DATE: April 14, 2018

**A limited block of sleeping rooms has been reserved for your convenience and will be available on a first come, first served basis.**

The Residence Inn Baltimore at The Johns Hopkins Medical Campus is a brand new, all suite facility located on the campus of The Johns Hopkins Medical Campus, with complimentary breakfast, room service and high-speed Internet. The hotel is conveniently located just two blocks from the Thomas B. Turner Building and a short taxi ride from Baltimore's Inner Harbor. Make your reservation online at <http://tinyurl.com/y7hx4ye4> or call the hotel directly and specify that you are attending the Johns Hopkins Infectious Diseases conference to receive the special group rate of \$175, single or double, plus tax. On-site parking is available at an additional charge. Check-in time is 4:00 p.m. Check-out time is 12:00 noon.

### How to Obtain Credit

Post activity, an online evaluation will be available to attendees to evaluate the activity and individual presentations and to identify future educational needs. Upon completion of the evaluation, the learner must attest to the number of hours in attendance. Credits earned will be added to the learner's transcript and immediately available for print. **The last day to access the evaluation and attest to your credits is June 29, 2018.**

An outcome survey will be sent to all physician attendees within two months post activity to assist us in determining what impact this activity had on the learner's practice.

### Emergency Calls

On May 14-15, 2018, direct emergency calls to the Hopkins registration desk, (410) 955-3673. Messages will be posted for participants.

### Americans with Disabilities Act

The Johns Hopkins University School of Medicine fully complies with the legal requirements of the ADA and the rules and regulations thereof. *Please notify us if you have any special needs.*

# PROGRAM

## Monday, May 14, 2018

7:00 – 8:00	Registration and Continental Breakfast
7:00 – 4:35	Exhibits Open
8:00 – 8:10	<b>Welcome and Conference Goals</b> Natasha Chida, MD, MSPH, Erica Johnson, MD, and Michael Melia, MD
8:10 – 8:55	<b>Shorter Courses of Antibiotics to Treat Common Infections</b> Robin McKenzie, MD
8:55 – 9:40	<b>Diabetic Foot Infections</b> Christopher Abularrage, MD
9:40 – 10:00	Refreshment Break
10:00 – 11:30	<b>Hot Topics in ID for 2018</b> Jonathan Zenilman, MD
11:30 am – 12:15	<b>Behavior, Free Will, and the Microbiome</b> Glenn Treisman, MD, PhD
12:15 – 1:15	<b>Lunch with the Professors</b> <i>Limited seating will be available with each faculty on a first-come, first-serve basis.</i>
1:15 – 2:00	<b>Acute and Chronic Rhinosinusitis</b> Jean Kim, MD
2:00 – 2:45	<b>STD Update Part 1</b> Khalil Ghanem, MD, PhD
2:45 – 3:05	Refreshment Break
3:05 – 3:50	<b>STD Update Part 2</b> Anne Marie Rompalo, MD
3:50 – 4:35	<b>Case Presentations</b>

## Tuesday, May 15, 2018

7:00 – 8:00	Continental Breakfast
7:00 – 5:30	Exhibits Open
8:00 – 8:45	<b>Clostridium difficile Colitis</b> Cynthia Sears, MD
8:45 – 9:30	<b>Hepatitis C Treatment: 2018 Update</b> Oluwaseun Falade-Nwulia, MBBS, MPH
9:30 – 10:15	<b>Updates in Microbiology Diagnostics</b> Patricia Simner, MSc, PhD
10:15 – 10:35	Refreshment Break
10:35 – 11:20	<b>Fever and Rash</b> Christopher Lippincott, MD, MPH
11:20 am – 12:05	<b>Antibiotic Allergies</b> N. Franklin Adkinson, Jr., MD
12:05 – 1:05	<b>Lunch with the Professors</b> <i>Limited seating will be available with each faculty on a first-come, first-serve basis.</i>
1:05 – 1:50	<b>Lyme Disease</b> Paul Auwaerter, MD, MBA
1:50 – 2:35	<b>Updates in Tuberculosis</b> Maunank Shah, MD, PhD
2:35 – 3:20	<b>Answers to Common UTI Questions</b> Michael Melia, MD
3:20 – 3:40	Refreshment Break
3:40 – 4:25	<b>Update on HIV Pre-Exposure Prophylaxis</b> Erica Johnson, MD
4:25 – 5:10	<b>What's New in HIV</b> Natasha Chida, MD, MSPH
5:10 – 5:30	<b>Summary</b>
5:30	Adjourn You will receive an email notification to complete the evaluation form and to attest to the number of hours in attendance. The registration desk will remain open during conference hours.



*The Johns Hopkins University School of Medicine takes responsibility for the content, quality and scientific integrity of this CME activity.*

*This schedule is subject to change.*



## GENERAL INFORMATION (cont.)

### To Register or for Further Information

Register Online

<https://hopkinscme.cloud-cme.com/aph.aspx?P=5&EID=10422>

Register by Phone (410) 502-9634

Register by Fax (866) 510-7088

Confirmation/Certificates/Transcripts (410) 502-9634

General Information (410) 955-2959

E-mail the Office of CME [cmenet@jhmi.edu](mailto:cmenet@jhmi.edu)

Follow us on Twitter: <http://twitter.com/HopkinsCME>

Facebook: <http://www.facebook.com/HopkinsCME>

**NEW!** Check out our mobile app CloudCME.

Organization Code: **HopkinsCME**



For website and CloudCME mobile app technical difficulties, email:  
[cmtechsupport@jhmi.edu](mailto:cmtechsupport@jhmi.edu)

Sponsoring Division Website:

<http://www.hopkinsmedicine.org/infectious-diseases/>

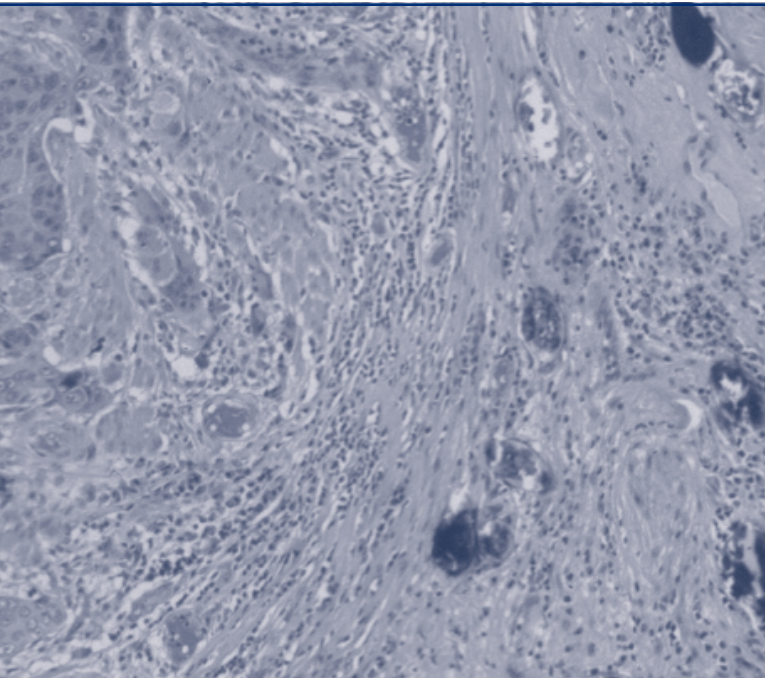
For general information, the direct link for this CME activity web page is:

<https://hopkinscme.cloud-cme.com/aph.aspx?P=5&EID=10422>

### Acknowledgement

Applications for commercial support from health care related industries are pending. A complete list of contributors will be provided in the syllabus. Please note that commercial support received is solely for the educational component of the activity and will not be used to provide food and beverage.

**Please note:** The Physician Payments Sunshine Act was enacted by Congress to increase public awareness of financial relationships between drug and medical device manufacturers and physicians. In compliance with the requirements of this Act, the commercial supporter/s of this activity may require the Johns Hopkins University School of Medicine to report certain professional information (such as name, address, National Provider Identifier (NPI), and State License number) of physician attendees who receive complimentary food and beverage in conjunction with a CME activity. The commercial supporter is required to submit the collected data to the Centers for Medicare and Medicaid Services which will then publish the data on its website.



## SPEAKERS

### Activity Directors

#### Natasha Chida, MD, MSPH

Assistant Professor of Medicine  
Associate Professor, Infectious  
Diseases Fellowship Program  
Johns Hopkins University  
School of Medicine

#### Erica Johnson, MD

Assistant Professor of Medicine  
Program Director, Internal Medicine  
Residency Program  
Johns Hopkins Bayview  
Medical Center

### Johns Hopkins Speakers

#### Christopher Abularrage, MD

The Bertram M. Bernheim  
Associate Professor of Surgery  
Johns Hopkins University  
School of Medicine

#### N. Franklin Adkinson, Jr., MD

Professor of Medicine  
Johns Hopkins Bayview  
Medical Center

#### Paul Auwaerter, MD, MBA

Professor of Medicine  
Clinical Director, Division of  
Infectious Diseases  
Johns Hopkins University  
School of Medicine

#### Oluwaseun Falade-Nwulia, MBBS, MPH

Assistant Professor of Medicine  
Johns Hopkins University  
School of Medicine

#### Khalil Ghanem, MD, PhD

Associate Professor of Medicine  
Deputy Director, Education,  
Department of Medicine  
Johns Hopkins Bayview  
Medical Center

#### Jean Kim, MD, PhD

Associate Professor of  
Otolaryngology-Head and Neck  
Surgery  
Johns Hopkins Bayview  
Medical Center

#### Christopher Lippincott, MD, MPH

Clinical Associate in Medicine  
Johns Hopkins University  
School of Medicine

#### Robin McKenzie, MD

Associate Professor of Medicine  
Johns Hopkins Bayview  
Medical Center

#### Michael Melia, MD

Associate Professor of Medicine  
Director, Infectious Diseases  
Fellowship Program  
Johns Hopkins University  
School of Medicine

#### Erica Johnson, MD

Assistant Professor of Medicine  
Program Director, Internal Medicine  
Residency Program  
Johns Hopkins Bayview  
Medical Center

### Johns Hopkins Speakers

#### Anne Marie Rompalo, MD

Professor of Medicine  
Johns Hopkins Bayview  
Medical Center

#### Cynthia Sears, MD

Professor of Medicine  
Johns Hopkins University  
School of Medicine

#### Maunank Shah, MD, PhD

Associate Professor of Medicine  
Johns Hopkins University  
School of Medicine

#### Patricia Simner, MSc, PhD

Assistant Professor of Pathology  
Johns Hopkins University  
School of Medicine

#### Glenn Treisman, MD, PhD

Professor of Psychiatry and  
Behavioral Sciences  
Director, AIDS Psychiatry Service  
Johns Hopkins University  
School of Medicine

#### Jonathan Zenilman, MD

Professor of Medicine  
Director, Infectious Diseases  
Johns Hopkins Bayview  
Medical Center

# Registration Form

Course Number 80043272 / 10422

## 12th Annual Infectious Diseases Update for Primary Care and Hospital Medicine

May 14-15, 2018

**To Register: Online:** <https://hopkinscme.cloud-cme.com/aph.aspx?P=5&EID=10422>  
**Phone:** (410) 502-9634 or **Fax:** (866) 510-7088

**Or mail** this form to the Johns Hopkins University, Office of Continuing Medical Education, 720 Rutland Avenue, Turner Room 20, Baltimore, Maryland 21205-2195. Include e-check or credit card information below.

### FULL PAYMENT IS REQUIRED PRIOR TO THE START OF THE ACTIVITY.

I am a speaker for this Johns Hopkins activity.

Please type or print clearly:

Last Name		First Name		M.I.
Highest Degree	Primary Specialty		Hopkins Faculty/Staff Only -JHED ID:	
NPI#		State License#	State of License	
ABIM #		Birth Month	Birth Date	
<input type="checkbox"/> I provide permission for my MOC completion information to be shared and transmitted to the Accreditation Council for Continuing Medical Education (ACCME).				
Mailing Address				
City		State	ZIP Code	Country
Daytime Telephone			Fax Number	
E-mail (required)				

Check here if you wish to receive e-mail notices about upcoming CME activities.

I plan to stay at the Residence Inn Baltimore at The Johns Hopkins Medical Campus in Baltimore, Maryland.

What do you hope to learn by attending this activity?

Please notify us if you have any special needs.

### Registration Fees:

- Physicians..... \$395  
 Residents\*/Fellows\*/Nurses/Nurse Practitioners/Physician Assistants/  
Allied Health Professionals..... \$320  
\*with verification of status

The registration fee includes instructional materials and food and beverage. For registrations received after 5:00 p.m. EST on May 8, 2018, include a \$50 late fee. On-site registrations are payable only by credit card.

Total amount enclosed \$ \_\_\_\_\_

### Payment Type:

**JHU Faculty/Staff Only:** If you are using your Tuition Remission Benefit or an ION budget, please upload your fully completed and approved form in the payment section of the online activity link above.

- TR Form:** <http://benefits.jhu.edu/documents/trffacandstaff.pdf>  
 **ION Form:** <http://hopkinscme.edu/migration/IonRequest.pdf>

**e-Check: Routing Number:** \_\_\_\_\_

**Account Number:** \_\_\_\_\_

**Credit Card:**  VISA  MASTERCARD  DISCOVER  AMEX

Card # \_\_\_\_\_ Exp. Date \_\_\_\_\_

Billing Zip Code \_\_\_\_\_ Security Code \_\_\_\_\_

Name on Card \_\_\_\_\_

Signature and Date \_\_\_\_\_



**JOHNS HOPKINS**  
M E D I C I N E

Office of Continuing Medical Education  
Johns Hopkins University School of Medicine  
Turner 20, 720 Rutland Avenue  
Baltimore, Maryland 21205-2195

# 12th Annual **Infectious Diseases Update**

for Primary Care and  
Hospital Medicine

**May 14-15, 2018**  
Baltimore, Maryland



**DATED MATERIAL**

Non-Profit Org.  
U.S. Postage  
PAID  
Bellmawr, NJ  
Permit No. 2134