

SEVENTH ANNUAL

Johns Hopkins

Spine Workshop

September 22-23, 2017

Baltimore, Maryland



CloudCME

NEW! Check out our mobile app CloudCME.
Organization Code: HopkinsCME
For website and CloudCME mobile app technical
difficulties, email: cmtechsupport@jhmi.edu

DATED MATERIAL



September 22-23, 2017
Vista Labs
A Cadaveric Surgical Training Center
Baltimore, Maryland
This activity is approved for AMA PRA Category 1 Credits™.

Spine Workshop

Johns Hopkins

SEVENTH ANNUAL

Johns Hopkins University
School of Medicine
Department of Neurosurgery
Presents

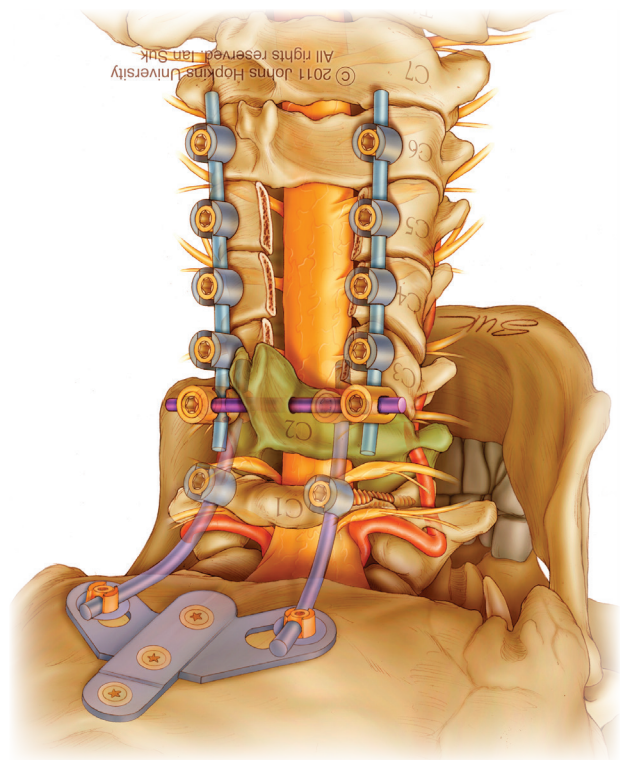


Illustration by Ian Suk, Johns Hopkins University, Department of Neurosurgery

Spine Workshop

DESCRIPTION

With safety as an utmost priority in spinal surgery, it is imperative that surgical trainees receive continual anatomical education. This is accomplished in the operating room while trainees learn on live patients. However, the safest way to learn is via cadaveric instruction. With the cost of health care increasing, the decrease in industry sponsored cadaveric courses due to political pressures against industry-sponsored medical education, and decreased working hours for physicians, such education is now at a premium. A spine cadaveric workshop is not only demanded but required in the current medical education so that surgeons can continue to be trained in safe and effective surgical techniques on the spine.

WHO SHOULD ATTEND

This activity is intended for spinal neurosurgeons and orthopaedic surgeons.

OBJECTIVES

After attending this activity, the participant will demonstrate the ability to:

- State indications and options for patients with spinal disorders.
- Describe technical instructions in decompressing and stabilizing the spinal column using minimally invasive techniques as well as standard and new techniques.
- Practice and improve spinal techniques before performing on a patient.
- Discuss the pros and cons of demonstrated procedures, better informing an action plan.
- Assess the anatomy of the spine, including occipital, thoracic, lumbar, sacral and pelvic regions in spine surgery.

ACCREDITATION STATEMENT

The Johns Hopkins University School of Medicine is accredited by the Accreditation Council for Continuing Medical Education (ACCME) to provide continuing medical education for physicians.



CREDIT DESIGNATION STATEMENT

The Johns Hopkins University School of Medicine designates this live activity for a maximum of 20 *AMA PRA Category 1 Credits*™. Physicians should claim only the credit commensurate with the extent of their participation in the activity.

POLICY ON SPEAKER AND PROVIDER DISCLOSURE

It is the policy of the Johns Hopkins University School of Medicine that the speaker and provider globally disclose conflicts of interest. The Johns Hopkins University School of Medicine OCME has established policies in place that will identify and resolve all conflicts of interest prior to this educational activity. Detailed disclosure will be made in the instructional materials.

General Information

REGISTRATION

Friday, September 22, 2017 – 6:30 a.m. – 7:00 a.m.

LOCATION

Vista Labs
1030 North Charles Street
Baltimore, Maryland 21201

FEES

REGISTRATION CUT-OFF DATE: SEPTEMBER 16, 2017

Methods of Payment: We require full payment prior to the start of the activity. On-site payments by credit card only. The registration fee includes instructional materials, breakfasts, refreshment breaks and lunches.

Physicians	\$1,200
Residents*/Fellows*	\$600

*with verification of status

You will receive a confirmation by e-mail. If you have not received it by September 16, 2017, call (410) 502-9634 to confirm that you are registered. A transcript of attendance will be available upon attestation of your credit hours and submission of the post activity online evaluation.

The Johns Hopkins University reserves the right to cancel or postpone any activity due to unforeseen circumstances. In this event, the University will refund the registration fee but is not responsible for travel expenses. Additionally, we reserve the right to change the venue to a comparable venue. Under such circumstances registrants will be notified as soon as possible.

LATE FEE AND REFUND POLICY

A \$50 late fee applies to registrations received after **5:00 p.m. ET on September 16, 2017**. A handling fee of \$50 will be deducted for cancellation. An additional fee may apply for cancellation of other events, including workshops and social activities. Refund requests must be received by fax or mail by September 16, 2017. No refunds will be made thereafter. Transfer of registration to another Johns Hopkins activity in lieu of cancellation is not possible.

SYLLABUS

The syllabus will be accessible online and via your mobile device in the CloudCME App prior to the activity.

EVALUATION AND OUTCOMES SURVEY

Post activity, an online evaluation form will be available to attendees to evaluate the activity and individual presentations and identify future educational needs. Upon completion of the evaluation, the learner must attest to the number of hours in attendance. Credits earned will be added to the learner's transcript and immediately available for print.

A survey will be sent to all physician attendees within three months post activity to assist us in determining what impact this activity had on the learner's practice.

EMERGENCY CALLS

During the days of this activity only, September 22-23, 2017, direct emergency calls to (410) 637-3705 and ask that a message be sent to the Hopkins registration desk. Messages will be posted for participants.

AMERICANS WITH DISABILITIES ACT

The Johns Hopkins University School of Medicine fully complies with the legal requirements of the ADA and the rules and regulations thereof. *Please notify us if you have any special needs.*

TO REGISTER or FOR FURTHER INFORMATION

Register Online	https://hopkinscme.cloud-cme.com/aph.aspx?P=5&EID=9711
Register by Phone.....	(410) 502-9634
Register by Fax	(866) 510-7088
Confirmation/Certificates/Transcripts	(410) 502-9634
General Information	(410) 955-2959
E-mail the Office of CME.....	cmenet@jhmi.edu

Follow us on Twitter: <http://twitter.com/HopkinsCME>

Facebook: <http://www.facebook.com/HopkinsCME>

For general information, the direct link for this CME activity web page is:

<https://hopkinscme.cloud-cme.com/aph.aspx?P=5&EID=9711>



Check out our mobile app CloudCME.

Organization Code: **HopkinsCME**

For website and CloudCME mobile app technical difficulties, email: cmetchsupport@jhmi.edu

Program

FRIDAY, September 22, 2017

- 6:30 - 7:00 Registration and Continental Breakfast
7:00 - 7:30 **Welcome, Introduction and Opening Remarks**
Daniel Sciubba, MD

Lecture Session I - Occipito-Cervical Access and Instrumentation

- 7:30 - 7:50 **Anterior Approaches to Subaxial Cervical Spine (ACDF, ACCE, Odontoid Screw)**
James Harrop, MD
7:50 - 8:10 **Posterior Cervical Instrumentation (Lateral Mass, C1-2, Translaminar, Occipito-Cervical)**
Nicholas Theodore, MD
8:10 - 8:30 **Anterior Approaches to Craniocervical Junction**
Sheng-fu Larry Lo, MD, MHS
8:30 - 8:45 Refreshment Break

Concurrent Laboratory Session I - Cervical Approaches and Instrumentation

Hands-on Cadaver Workshop 1

- 8:45 - 10:00 **Anterior Cervical Discectomy, Anterior Cervical Corpectomy, Cage and Plate, Odontoid Screw**
All Faculty
10:00 - 11:45 **Occipital, C1, C2, Lateral Mass Screws, Translaminar Screws**
All Faculty
Hands-on Cadaver Workshop 2
9:00 - 11:45 **Transoral Dissection Table (1 table run concurrently)**
Daniel Sciubba, MD
11:45 - 1:00 Working Lunch
12:00 - 12:30 **Cervical Degenerative Case Discussion**
Ali Bydon, MD
12:30 - 1:00 **Cervical Degenerative Case Discussion**
Lee Riley, III, MD

Lecture Session II - Posterior Instrumentation and Approaches to Thoracic, Lumbar, Sacrum and Pelvis

- 1:00 - 1:30 **Thoracic, Lumbar, Sacral and Pelvic Screw Placement**
Christopher Neal, MD
1:30 - 2:00 **Posterior Lumbar Osteotomies (Ponte, Smith-Peterson Osteotomy, Pedicle Subtraction Osteotomy)**
Timothy Witham, MD, FACS
2:00 - 2:30 **Posterior Thoracic Osteotomies (Ponte, Smith-Peterson Osteotomy, Vertebral Column Resection)**
Amer Samdani, MD

Laboratory Session II - Posterior Instrumentation and Approaches to Thoracic, Lumbar, Sacrum and Pelvis

- 2:30 - 3:30 **Placement of Pedicle Screws in Thoracic, Lumbar, Sacrum and Pelvis**
All Faculty
3:30 - 4:30 **L3 Pedicle Subtraction Osteotomy**
All Faculty
4:30 - 5:30 **T8 Vertebral Column Resection**
All Faculty
5:30 - 5:50 **Tumor Case Review**
Ilya Laufer, MD
5:50 - 6:10 **Cervical Deformity Case Review**
Charles Sansur

SATURDAY, September 23, 2017

- 6:30 - 6:50 Continental Breakfast
6:50 - 7:00 **Introduction and Goals for the Day**
Daniel Sciubba, MD

Lecture Session III – Minimally Invasive Approaches to T-L-S Spine

- 7:00 - 7:30 **Spinal Biomechanics/Global Balance**
Ryan Kretzer, MD
7:30 - 8:00 **Minimally Invasive Posterior Approaches (Discectomy, Laminectomy, TLIF, Percutaneous Screws)**
Ali Baaj, MD
8:00 - 8:30 **Minimally Invasive Lateral Approaches to T-L Spine (XLIF, DLIF)**
Luiz Pimenta, MD, PhD
8:30 - 9:00 **Minimally Invasive Approaches to Adult Degenerative Spinal Deformity/Cases**
Ali Ozturk, MD

Concurrent Laboratory Session III – Minimally Invasive Approaches to T-L-S Spine

Hands-on Cadaver Workshop 3

- 9:00 - 10:30 **Minimally Invasive TLIF with Placement of Percutaneous Pedicle Screws (L4-5)**
All Faculty
10:30 - 12:00 **Minimally Invasive Lateral Approaches to Lumbar Spine (XLIF, DLIF) (L3-4)**
All Faculty
12:00 - 1:00 Working Lunch
12:00 - 12:30 **Thoracolumbar Case Review**
Reza Yassari, MD
12:30 - 1:00 **Adult Deformity Case Discussion**
Brian O'Shaughnessy, MD

Lecture Session IV – Anterior and Lateral Open Approaches to T-L Spine

- 1:00 - 1:30 **Anterior Transcavitary Approaches (Sternotomy, Manubriotomy, Aortocaval Windows)**
Daniel Sciubba, MD
1:30 - 2:00 **Lateral Open Access to T-L Spine (Thoracotomy, Thoraco-abdominal Approach)**
Daniel Sciubba, MD

Laboratory Session IV – Anterior and Lateral Open Approaches to T-L Spine

- 2:00 - 3:00 **Sternotomy and Trap-door Thoracotomy**
All Faculty
3:00 - 4:00 **Thoraco-Abdominal/10th Rib Approach, L1 Vertebrectomy, T12-L2 Reconstruction**
All Faculty
4:00
Adjourn
You will receive an email notification to complete the evaluation form and to attest to the number of hours in attendance.
The Registration Desk will remain open during conference hours.

Acknowledgement

Applications for commercial support from health care related industries are pending. A complete list of contributors will be provided in the syllabus. Please note that commercial support received is solely for the educational component of the activity and will not be used to provide food and beverage.

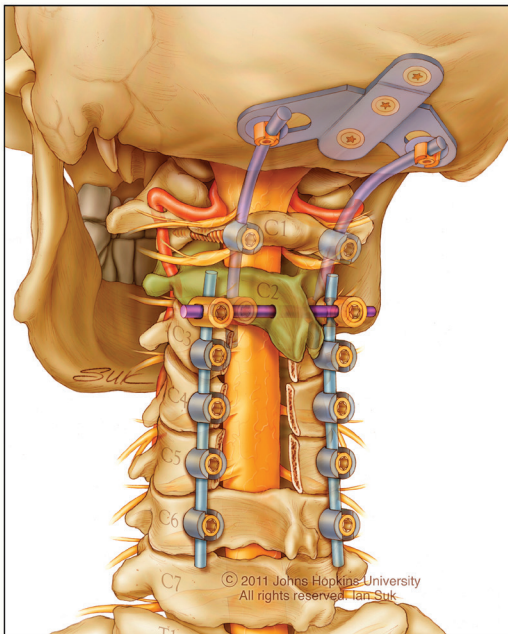
Please note: The Physician Payments Sunshine Act was enacted by Congress to increase public awareness of financial relationships between drug and medical device manufacturers and physicians. In compliance with the requirements

of this Act, the commercial supporter/s of this activity may require the Johns Hopkins University School of Medicine to report certain professional information (such as name, address, National Provider Identifier (NPI), and State License number) of physician attendees who receive complimentary food and beverage in conjunction with a CME activity. The commercial supporter is required to submit the collected data to the Centers for Medicare and Medicaid Services which will then publish the data on its website.

Speakers

Activity Director

Daniel Sciubba, MD
 Professor of Neurosurgery
 Director of Spine Tumor and Spine Deformity Surgery



Johns Hopkins Speakers

Ali Bydon, MD
 Professor of Neurosurgery

Brian Neuman, MD
 Assistant Professor of Orthopaedic Surgery

Lee Riley, III, MD
 Professor of Orthopaedic Surgery
 Vice Director of Clinical Operations

Nicholas Theodore, MD
 Professor of Neurosurgery and Orthopaedic Surgery

Timothy Witham, MD, FACS
 Professor of Neurosurgery and Orthopaedic Surgery

Guest Speakers

Ali Baaj, MD
 Assistant Professor of Surgery
 Director, Spinal Neurosurgery Program
 Cornell University
 New York, New York

James Harrop, MD
 Professor of Neurosurgery and
 Orthopaedic Surgery
 Thomas Jefferson University
 Philadelphia, Pennsylvania

Ryan Kretzer, MD
 Neurosurgeon
 Director, Spine Surgery
 Carondelet Neurological Institute
 St. Joseph's Hospital
 Tucson, Arizona

Ilya Laufer, MD
 Assistant Attending
 Memorial Sloan-Kettering Cancer Center
 Assistant Professor
 Weill Medical College of Cornell University
 New York, New York

Sheng-fu Larry Lo, MD, MHS
 Assistant Professor of Neurosurgery
 Columbia University College
 of Physicians and Surgeons
 New York, New York

Christopher Neal, MD
 Associate Program Director of Neurosurgery
 Walter Reed National Medical Center
 Bethesda, Maryland

Brian O'Shaughnessy, MD
 Spinal Surgeon / Neurosurgeon
 Partner, Howell Allen Clinic
 Chief of Neurological Surgery
 St. Thomas Midtown Hospital
 Nashville, Tennessee

Ali Ozturk, MD
 Assistant Professor of Medicine
 Pennsylvania Hospital
 Philadelphia, Pennsylvania

Luiz Pimenta, MD, PhD
 Assistant Professor of Neurosurgery,
 UCSD Chief, Department of Minimally
 Invasive and Reconstructive Surgery
 Santa Rita Hospital
 São Paulo, Brazil

Amer Samdani, MD
 Director of Spine Services
 Shriners Hospital for Children
 Philadelphia, Pennsylvania

Charles Sansur, MD
 Assistant Professor of Neurosurgery
 Director, Complex Spine Surgery
 University of Maryland Medical Center
 Baltimore, Maryland

Reza Yassari, MD
 Associate Professor of Clinical Neurological Surgery
 Director, Neurological Surgery Residency
 Training Program
 Albert Einstein College of Medicine
 Bronx, New York

Registration Form

80042558/9711

Seventh Annual Johns Hopkins Spine Workshop

September 22–23, 2017

To Register: **Online:** <https://hopkinscme.cloud-cme.com/aph.aspx?P=5&EID=9711>
By fax: (866) 510-7088
By phone: (410) 502-9634

Or mail this form to the Johns Hopkins University, Office of Continuing Medical Education, 720 Rutland Avenue, Turner Room 20, Baltimore, Maryland 21205-2195. Include e-check or credit card information below.

FULL PAYMENT IS REQUIRED PRIOR TO THE START OF ACTIVITY.

I am a Johns Hopkins speaker for this activity.

Please type or print clearly:

last name		first name		m.i.	
highest degree	primary specialty		Hopkins faculty/staff only JHED ID		
For Physicians Only:	NPI – 10 digits		State License #		State of License
mailing address					
city		state	ZIP	country	
daytime telephone			fax number		
e-mail (required field)					

Check here if you wish to receive e-mail notices about upcoming CME activities.

What do you hope to learn by attending this activity?

Please notify us if you have any special needs.

Registration Fees:

- Physicians \$1,200
 Residents*/Fellows* \$600
 *with verification of status

The registration fee includes instructional materials and food and beverage. For registrations received after 5:00 p.m. ET on September 16, 2017, include a \$50 late fee. On-site registrations are payable only by credit card.

Total Amount \$ _____

Payment Type:

JHU Faculty/Staff Only: If you are using your Tuition Remission Benefit or an ION budget, please upload your fully completed and approved form in the payment section of the online activity link above.

- TR Form: <http://benefits.jhu.edu/documents/trffacandstaff.pdf>
 ION Form: <http://hopkinscme.edu/migration/IonRequest.pdf>

e-Check: Routing Number _____ Account Number _____

Credit Card: VISA MASTERCARD DISCOVER AMEX

Card # _____ - _____ - _____ - _____ Exp. Date _____

Billing Zip Code _____ Security Code _____

 Name on Card

 Signature and Date