

Johns Hopkins University School of Medicine
Division of Interventional Pulmonology

Presents

Seventh Annual Evaluation and Management of Pleural Disease February 2-3, 2017



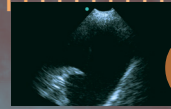
1910



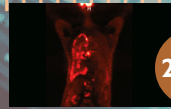
1930



1960



1990



2017



This conference has
been endorsed by the
American Thoracic Society.

This activity has been approved for *AMA PRA Category 1 Credits™*.

Chevy Chase Bank Conference Center
The Sheikh Zayed Tower
and the

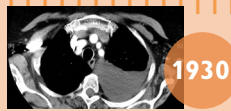
Minimally Invasive Surgical Training Center (MISTC Lab)
The Johns Hopkins Hospital
Baltimore, Maryland



JOHNS HOPKINS
MEDICINE



1910



1930



1960



1990



2017

Description

This activity is designed to educate the practicing pulmonologist and chest surgeon, as well as other health care professionals, interested in the care of patients with pleural disease.

Participants will develop a comprehensive knowledge of the indications, contraindications and associated complications of common pleural procedures including thoracentesis, chest tube and indwelling pleural catheter placement, pleural biopsy and thoracoscopy. Procedures will be discussed in the didactic session on day one and will be demonstrated and practiced on day two at the hands-on stations on human cadavers in the MISTC Lab.

Who Should Attend

This activity is intended for pulmonologists and chest surgeons, nurses, nurse practitioners, physician assistants, as well as other health care professionals interested in the care of patients with pleural disease.

Objectives

After attending this activity, the participant will demonstrate the ability to:

- Interpret pleural pathophysiology.
- Discuss in detail the evaluation and management of patients with pleural effusion and pneumothorax.
- Use ultrasound to guide pleural intervention.

ACCREDITATION STATEMENT

The Johns Hopkins University School of Medicine is accredited by the Accreditation Council for Continuing Medical Education (ACCME) to provide continuing medical education for physicians.



CREDIT DESIGNATION STATEMENT

The Johns Hopkins University School of Medicine designates this live activity for a maximum of 12.0 *AMA PRA Category 1 Credits*™. Physicians should claim only the credit commensurate with the extent of their participation in the activity.

MOC STATEMENT

Successful completion of this CME activity, which includes participation in the evaluation component, enables the participant to earn up to 12 MOC points in the American Board of Internal Medicine's (ABIM) Maintenance of Certification (MOC) program. Participants will earn MOC points equivalent to the amount of CME credits claimed for the activity. It is the CME activity provider's responsibility to submit participant completion information to ACCME for the purpose of granting ABIM MOC credit.



POLICY ON SPEAKER AND PROVIDER DISCLOSURE

It is the policy of the Johns Hopkins University School of Medicine that the speaker and provider globally disclose conflicts of interest. The Johns Hopkins University School of Medicine OCME has established policies in place that will identify and resolve all conflicts of interest prior to this educational activity. Detailed disclosure will be made in the instructional materials.

OTHER CREDIT

American Academy of Nurse Practitioners National Certification Program accepts *AMA PRA Category 1 Credits*™ from organizations accredited by the ACCME.

American Academy of Physician Assistants (AAPA) accepts certificates of participation for educational activities certified for *AMA PRA Category 1 Credits*™ from organizations accredited by ACCME. Physician assistants may receive a maximum of 12.0 AAPA Category 1 CME credits for completing this program.

American Nurses Credentialing Center (ANCC) accepts *AMA PRA Category 1 Credits*™ from organizations accredited by the ACCME.

The Johns Hopkins University has approved this activity for 12.0 **contact hours for non-physicians**.

ACTIVITY DIRECTOR

David Feller-Kopman, MD, FCCP
Associate Professor of Medicine
Director, Bronchoscopy and
Interventional Pulmonology

HOPKINS SPEAKERS

Hans Lee, MD
Assistant Professor of Medicine
Director, Pleural Disease Service

Andrew Lerner, MD
Assistant in Medicine

Yusuke Terasaki, MD
Cardiothoracic Surgery Fellow

Stephen Yang, MD
Professor of Surgery and Oncology
The Arthur B. and Patricia B. Modell
Professor in Thoracic Surgery
Director, Thoracic Oncology Program
Chief, Thoracic Surgery

Lonny Yarmus, DO, FCCP
Associate Professor of Medicine
Clinical Director, Division of Pulmonary
and Critical Care Medicine

Diana Yu, MD
Assistant in Medicine

GUEST SPEAKERS

Joseph Friedberg, MD
Charles Reid Edwards Professor of Surgery
Thoracic Surgeon-In-Chief
University of Maryland School of Medicine
Baltimore, Maryland

Richard Light, MD
Professor of Medicine
Vanderbilt University Medical Center
Nashville, Tennessee

Ashtoush Sachdeva, MBBS
Assistant Professor of Medicine
University of Maryland School of Medicine
Baltimore, Maryland

Roy Semaan, MD
Assistant Professor of Medicine
Director, Interventional Pulmonary Program
University of Pittsburgh School of Medicine
Pittsburgh, Pennsylvania

To Register or For Further Information

- Register Online <https://hopkinscme.cloud-cme.com/aph.aspx?P=5&EID=7354>
- Register by Phone (410) 502-9634
- Register by Fax (866) 510-7088
- Confirmation/Certificates/Transcripts (410) 502-9634
- General Information (410) 955-2959
- E-mail the Office of CME cmenet@jhmi.edu

Follow us on Twitter: <http://twitter.com/HopkinsCME>
Facebook: <http://www.facebook.com/HopkinsCME>

For website and CloudCME mobile app technical difficulties,
email: cmetsupport@jhmi.edu

Sponsoring Division Website: www.hopkinsmedicine.org/IP

For general information, please visit the activity webpage at
<https://hopkinscme.cloud-cme.com/aph.aspx?P=5&EID=7354>



NEW! Check out our
mobile app CloudCME.
Organization Code: *HopkinsCME*

Program

Thursday, February 2, 2017

Chevy Chase Bank Conference Center
The Sheikh Zayed Tower, The Johns Hopkins Hospital

7:45 - 8:30	Registration and Continental Breakfast
8:30 - 8:35	Welcome and Conference Goals David Feller-Kopman, MD, FCCP
8:35 - 9:00	Review of Pleural Anatomy and Physiology David Feller-Kopman, MD, FCCP
9:00 - 9:20	The Evaluation of Pleural Effusions: Does Light's Criteria Still Apply? Richard Light, MD
9:20 - 9:50	Ultrasound Guidance for Pleural Access Diana Yu, MD
9:50 - 10:05	Questions and Answers
10:05 - 10:25	Refreshment Break
10:25 - 10:45	Chest Tube Placement and Thoracentesis Pearls Hans Lee, MD
10:45 - 11:10	Medical Thoracoscopy Lonny Yarmus, DO, FCCP
11:10 - 11:50	VATS 101 Stephen Yang, MD
11:50 - 12:00	Questions and Answers
12:00 - 1:00	Lunch
1:00 - 1:30	Parapneumonic Effusion and Empyema Roy Semaan, MD
1:30 - 2:00	Management of Malignant Pleural Effusions Andrew Lerner, MD
2:00 - 2:25	Updates in Malignant Mesothelioma Joseph Friedberg, MD
2:25 - 2:40	Questions and Answers
2:40 - 3:00	Refreshment Break
3:00 - 3:25	Management of Unclear Exudates Lonny Yarmus, DO, FCCP
3:25 - 3:45	Management of Pneumothorax Richard Light, MD

3:45 - 4:05	Pleural Disease Journal Club: The Year in Review David Feller-Kopman, MD, FCCP
4:05 - 4:20	Credentialing, Coding and Reimbursement Hans Lee, MD
4:20 - 4:30	Questions and Answers
4:30	Adjourn

Friday, February 3, 2017

Minimally Invasive Surgical Training Center (MISTC Lab)
Blalock Building, 12th Floor, The Johns Hopkins Hospital

7:45 - 8:30	Continental Breakfast	
8:30 - 9:30	Pleural Disease Update: 2017 Richard Light, MD	
9:30 - 3:00	Hands-On Stations* (human cadavers) 30 min / station	
Station A:	Semi-Rigid Thoracoscopy	Lonny Yarmus, DO, FCCP
Station B:	Rigid Thoracoscopy	Stephen Yang, MD
Station C:	Tunneled Pleural Catheters	Andrew Lerner, MD
Station D:	Semi-Rigid Thoracoscopy	Roy Semaan, MD
Station E:	Tube Thoracostomy	Diana Yu, MD
Station F:	Intrabronchial Valve	Hans Lee, MD
Station G:	Tunneled Pleural Catheter / Tube Thoracostomy	Ashtoush Sachdeva, MBBS
Station H:	VATS	Yusuke Terasaki, MD
Station I:	Meet the Professor	Richard Light, MD
Station J:	Ultrasound Simulator	David Feller-Kopman, MD, FCCP

*We will provide caps, masks, gloves and gowns for the lab. Participants are required to provide their own scrubs and proper footwear.

12:00 - 12:45	Lunch
3:00	Adjourn - You will receive an email notification to complete the evaluation form and to attest to the number of hours in attendance. The registration desk will remain open during conference hours.

The Johns Hopkins University School of Medicine takes responsibility for the content, quality and scientific integrity of this CME activity. This schedule is subject to change.

General Information

REGISTRATION

Thursday, February 2, 2017 • 7:45 a.m. – 8:30 a.m.

LOCATION

Thursday, February 2, 2017

Chevy Chase Bank Conference Center
The Sheikh Zayed Tower
The Johns Hopkins Hospital
1800 Orleans Street, Main Level
Baltimore, Maryland 21287

Friday, February 3, 2017

Minimally Invasive Surgical Training Center (MISTC Lab)
The Johns Hopkins Hospital
1800 Orleans Street
Blalock Building, 12th Floor
Baltimore, Maryland 21287

The Johns Hopkins Hospital is located on Orleans Street (Route 40) between Broadway and Wolfe Streets. Directions and campus parking information are available on our website under the Contact Us tab at <https://HopkinsCME.cloud-cme.com>. The closest public garage is the Orleans Street Garage, which is located across the skywalk from the main entrance to the hospital. Handicapped parking is also available in the Orleans Street Garage. Complimentary round-trip transportation for attendees staying at the conference headquarters hotel will be provided. *Johns Hopkins is smoke-free.*

FEES

REGISTRATION CUT-OFF DATE: JANUARY 27, 2017

Methods of Payment: We require full payment prior to the start of the activity. On-site payments by credit card only. The registration fee includes instructional materials, continental breakfasts, refreshment breaks and lunches.

Physicians Full Two-day Course (with Lab) [†]	\$1,095
Residents*/Fellows* Full Two-day Course (with Lab) [†]	\$1,095
Nurses/NPs/PAs/Allied Health Professionals Full Two-day Course (with Lab) [†]	\$1,095
Physicians Day One Lectures Only.....	\$695
Residents*/Fellows* Day One Lectures Only.....	\$495
Nurses/NPs/PAs/Allied Health Professionals Day One Lectures Only	\$695

[†]Limit to 30 participants for Lab *with verification of status

You will receive a confirmation by e-mail. If you have not received it by January 27, 2017, call (410) 502-9634 to confirm that you are registered. A transcript of attendance will be available upon attestation of your credit hours and submission of the post activity online evaluation.

The Johns Hopkins University reserves the right to cancel or postpone any activity due to unforeseen circumstances. In this event, the University will refund the registration fee but is not responsible for travel expenses. Additionally, we reserve the right to change the venue to a comparable venue. Under such circumstances registrants will be notified as soon as possible.

SAVE THE DATE
EBUS and Advanced Diagnostic
Bronchoscopy: The Sixth Year

July 20-21, 2017

Hyatt Regency Chesapeake Bay
Cambridge, Maryland

<https://hopkinscme.cloud-cme.com/aph.aspx?P=5&EID=7269>

General Information (cont.)

LATE FEE AND REFUND POLICY

A \$50 late fee applies to registrations received after 5:00 p.m. ET on January 27, 2017. A handling fee of \$50 will be deducted for cancellation. An additional fee may apply for cancellation of other events, including workshops and social activities. Refund requests must be received by fax or mail by January 27, 2017. No refunds will be made thereafter. Transfer of registration to another Johns Hopkins activity in lieu of cancellation is not possible.

SYLLABUS

The syllabus will be accessible online and via your mobile device in the CloudCME App prior to the activity.

EVALUATION AND OUTCOMES SURVEY

Post activity, an online evaluation form will be available to attendees to evaluate the activity and individual presentations and identify future educational needs. Upon completion of the evaluation, the learner must attest to the number of hours in attendance. Credits earned will be added to the learner's transcript and immediately available for print.

A survey will be sent to all physician attendees within three months post activity to assist us in determining what impact this activity had on the learner's practice.

HOTEL AND TRAVEL INFORMATION

We strongly encourage you to book accommodations at the Renaissance Harborplace Hotel, which is the conference headquarters hotel. The Johns Hopkins Office of CME makes every effort to secure the best rate for overnight accommodations. The rate is part of a negotiated conference package that incorporates many services. By staying at the host hotel and booking within the room block, you help us maintain current conference benefits and keep future registration fees reasonable. Please consider this when making your overnight accommodations decision.

Renaissance Harborplace Hotel

202 East Pratt Street (410) 547-1200
Baltimore, Maryland 21202 (410) 539-5780 (fax)
Marriott Reservations (800) 468-3571
Web Site: www.renaissancehotels.com

HOTEL RESERVATION CUT-OFF DATE: JANUARY 11, 2017

A limited block of sleeping rooms has been reserved for your convenience and will be available on a first come, first served basis.

The Renaissance Harborplace Hotel is part of the waterfront complex of Harborplace, and only steps away from the many attractions of Baltimore's Inner Harbor. Make your reservation online at <https://aws.passkey.com/e/16443007> or call the hotel directly and specify that you are attending the Johns Hopkins Pleural Disease conference to receive the special group rate of \$155, single or double, plus tax. Complimentary roundtrip transportation will be provided. On-site parking is available at the hotel at an additional charge. Check-in time is 4:00 p.m. Check-out time is 12:00 p.m.

EMERGENCY CALLS

On February 2, 2017, direct emergency calls to the Hopkins registration desk, (443) 287-5426. Messages will be posted for participants.

On February 3, 2017, direct emergency calls to the MISTC Lab, (443) 287-2334. Messages will be posted for participants.

AMERICANS WITH DISABILITIES ACT

The Johns Hopkins University School of Medicine fully complies with the legal requirements of the ADA and the rules and regulations thereof. *Please notify us if you have any special needs.*

ACKNOWLEDGEMENT

Applications for commercial support from health care related industries are pending. A complete list of contributors will be provided in the syllabus. Please note that commercial support received is solely for the educational component of the activity and will not be used to provide food and beverage.

Please note: The Physician Payments Sunshine Act was enacted by Congress to increase public awareness of financial relationships between drug and medical device manufacturers and physicians. In compliance with the requirements of this Act, the commercial supporter/s of this activity may require the Johns Hopkins University School of Medicine to report certain professional information (such as name, address, National Provider Identifier (NPI), and State License number) of physician attendees who receive complimentary food and beverage in conjunction with a CME activity. The commercial supporter is required to submit the collected data to the Centers for Medicare and Medicaid Services which will then publish the data on its website.

Registration Form

Seventh Annual Evaluation and Management of Pleural Disease

Course Number 80041670/EID7354

February 2-3, 2017

To Register: Online: <https://hopkinscme.cloud-cme.com/aph.aspx?P=5&EID=7354> **Phone:** (410) 502-9634 **Fax:** (866) 510-7088

Or mail this form to the Johns Hopkins University, Office of Continuing Medical Education, 720 Rutland Avenue, Turner Room 20, Baltimore, Maryland 21205-2195. Include e-check or credit card information below.

FULL PAYMENT IS REQUIRED PRIOR TO THE START OF ACTIVITY.

I am a Johns Hopkins speaker for this activity.

Please type or print clearly:

last name		first name	m.i.	
highest degree	primary specialty		Hopkins faculty/staff only JHED ID	
For Physicians Only:	NPI – 10 digits	State License #		State of License
mailing address				
city		state	ZIP	country
daytime telephone		fax number		
e-mail (required)				

Check here if you wish to receive e-mail notices about upcoming CME activities.

I plan to stay at the Renaissance Harborplace Hotel.

What do you hope to learn by attending this activity? _____

Please notify us if you have any special needs. _____

Registration Fees:

- Physicians** – Full Two-day Course (with Lab)[†] \$1,095
- Residents*/Fellows*** – Full Two-day Course (with Lab)[†] \$1,095
- Nurses/NPs/PAs/Allied Health Professionals**
– Full Two-day Course (with Lab)[†] \$1,095
- Physicians** – Day One Lectures Only \$695
- Residents*/Fellows*** – Day One Lectures Only \$495
- Nurses/NPs/PAs/Allied Health Professionals**
– Day One Lectures Only \$695

[†]Limit to 30 participants for Lab *with verification of status

The registration fee includes instructional materials and food and beverage. For registrations received after 5:00 p.m. ET on January 27, 2017, include a \$50 late fee. On-site registrations are payable only by credit card.

Total amount \$ _____

Payment Type:

JHU Faculty/Staff Only: If you are using your Tuition Remission Benefit or an ION budget, please upload your fully completed and approved form in the payment section of the online activity link above.

- TR Form: <http://benefits.jhu.edu/documents/trffacandstaff.pdf>
- ION Form: <http://hopkinscme.edu/migration/IonRequest.pdf>

e-Check Routing #: _____ Account #: _____

Credit Card: VISA MASTERCARD DISCOVER AMEX

Card # _____ - _____ - _____ - _____ Exp. Date _____

Billing Zip Code _____ Security Code _____

Name on Card

Signature and Date