

Department of Medicine at
Johns Hopkins University
School of Medicine and
Johns Hopkins Bayview Medical Center
presents

Eleventh Annual

Infectious Diseases Update

for Primary Care and
Hospital Medicine

October 20-21, 2016

Thomas B. Turner Building
Johns Hopkins University
School of Medicine
Baltimore, Maryland

This activity has been approved for
AMA PRA Category 1 Credits™.



DESCRIPTION

Infectious diseases kill more people worldwide than any other single cause and are among the most common reasons for hospitalization. Infectious diseases is a dynamic field, and new challenges have emerged facing primary care practitioners in the outpatient setting and hospitalists in the inpatient venue. Most infections are cared for, and most antibiotic prescriptions are written, by PCPs and hospitalists—not infectious diseases specialists. Changes in the health care system have prompted development and implementation of guidelines and clinical pathways. These all impact generalist providers, who have limited time and resources to access expert information in infectious diseases. Generalist providers include outpatient primary care physicians and mid-level providers, emergency department providers, and inpatient hospitalists.

This course is designed to explore major areas in infectious diseases which are impacting generalists. Our major areas of focus will include:

Review of acute infectious diseases that are encountered by the primary care practitioners and hospitalist. This will include reviews of endocarditis, pneumonia, and ID emergencies.

- Major changes in therapy for hepatitis C which have revolutionized clinical care for this common disease. New regimens introduced in the past year have made practical outpatient, non-toxic treatment. However, these therapies need to be judiciously used since they are very expensive.
- The CDC has released new changes in national guidelines for sexually transmitted infections, with new treatment strategies especially for antibiotic resistant gonorrhea and pelvic inflammatory disease, as well as new pre-exposure guidelines for HIV (PrEP). We will also focus on infections seen in the pregnant patient.
- New and emerging diseases continue to develop. Furthermore, tick borne infections and Lyme Disease continue to present diagnostic dilemmas, especially in hyper endemic areas such as the Mid-Atlantic.

GENERAL INFORMATION

Registration

Thursday, October 20, 2016 • 7:00 a.m. – 8:00 a.m.

Location

Thomas B. Turner Auditorium
Johns Hopkins University School of Medicine
720 Rutland Avenue
Baltimore, Maryland 21205

The Turner Building is located on Rutland Avenue at East Monument Street. Directions and campus parking information are available on our website under the Contact Us section at <https://hopkinscme.cloud-cme.com>. Handicapped parking is available in the nearby Rutland Garage. Complimentary round-trip transportation for attendees staying at conference headquarters hotel will be provided. **Johns Hopkins is smoke-free.**

Fees

REGISTRATION CUT-OFF DATE: October 14, 2016

Register Online at: <https://hopkinscme.cloud-cme.com/aph.aspx?P=5&EID=6618>

Methods of Payment: We require full payment prior to the start of the activity. On-site payments by credit card only. Foreign payments must be by credit card or with a U.S. Dollar World Money Order. The registration fee includes instructional materials, continental breakfasts, refreshment breaks and lunches.

Physicians	\$395
Residents*/Fellows*/Nurses/Nurse Practitioners/	
Physician Assistants/Allied Health Professionals.....	\$320
*with verification of status	

You will receive a confirmation by e-mail. If you have not received it by **October 14, 2016**, call (410) 502-9634 to confirm that you are registered. A transcript of attendance will be sent via email by **December 5, 2016**.

Emerging global health issues over the past year have included major concern over flavivirus infections (Dengue and Zika), especially for pregnant women, and travelers to endemic areas. These will be reviewed and our focus will be on clinical issues which are relevant to the PCP's especially in travelers.

MRSA and antimicrobial resistant infections continue to pose major challenges. In response, there have been major advances in understanding the epidemiology of these organisms, development of new antibiotics, as well as new clinical trials data which has provided clear guidelines on how to manage these infections.

Who Should Attend

This activity is intended for emergency medicine physicians, family practitioners, internists, public health practitioners, nurses, nurse practitioners, and physician assistants.

Objectives

After attending this activity, the participant will demonstrate the ability to:

- Describe the new drugs and strategies for the treatment of Hepatitis C infection and when to refer to a specialist for management.
- Identify the clinical and diagnostic features of Lyme and other tickborne infections.
- Formulate a differential diagnosis and treatment plan for hospital acquired skin infections and pneumonia.
- Describe the current approach for working up a newly diagnosed HIV patient in the primary care setting.
- Formulate the differential diagnosis and treatment plan for genitourinary tract infections in women, including STIs and infections in pregnancy.

Accreditation Statement

The Johns Hopkins University School of Medicine is accredited by the Accreditation Council for Continuing Medical Education (ACCME) to provide continuing medical education for physicians.

The Johns Hopkins University reserves the right to cancel or postpone any activity due to unforeseen circumstances. In this event, the University will refund the registration fee but is not responsible for travel expenses. Additionally, we reserve the right to change the venue to a comparable venue. Under such circumstances registrants will be notified as soon as possible.

Late Fee and Refund Policy

A \$50 late fee applies to registrations received after 5:00 p.m. ET on **October 14, 2016**. A handling fee of \$50 will be deducted for cancellation. An additional fee may apply for cancellation of other events, including workshops and social activities. Refund requests must be received by fax or mail by **October 14, 2016**. No refunds will be made thereafter. Transfer of registration to another Johns Hopkins activity in lieu of cancellation is not possible.

Syllabus

The syllabus will be accessible online and via your mobile device in the Cloud App prior to the activity.

Evaluation and Outcomes Surveys

Post-activity, an online evaluation form will be available to attendees to evaluate the activities and individual presentations and identify future educational needs. Upon completion of the evaluation, the learner must attest to the number of hours in attendance. Credits earned will be added to the learner's transcript and immediately available for print.

A survey will be sent to all physician attendees within three months post activity to assist us in determining what impact this activity had on the learner's practice.

Emergency Calls

On October 21-22, 2016, direct emergency calls to the Hopkins registration desk, (410) 955-3673. Messages will be posted for participants.

Americans with Disabilities Act

The Johns Hopkins University School of Medicine fully complies with the legal requirements of the ADA and the rules and regulations thereof. *Please notify us if you have any special needs.*

Credit Designation Statement

The Johns Hopkins University School of Medicine designates this live activity for a maximum of 16.5 *AMA PRA Category 1 Credits™*. Physicians should claim only the credit commensurate with the extent of their participation in the activity.



MOC Statement

Successful completion of this CME activity, which includes participation in the evaluation component, enables the participant to earn up to 16.5 MOC points and patient safety MOC credit in the American Board of Internal Medicine's (ABIM) Maintenance of Certification (MOC) program. Participants will earn MOC points equivalent to the amount of CME credits claimed for the activity. It is the CME activity provider's responsibility to submit participant completion information to ACCME for the purpose of granting ABIM MOC credit.



Other Credits

American Academy of Nurse Practitioners National Certification Program (AANP) accepts *AMA PRA Category 1 Credit™* from organizations accredited by the ACCME.

American Academy of Physician Assistants (AAPA) accepts certificates of participation for educational activities certified for *AMA PRA Category 1 Credit™* from organizations accredited by ACCME. Physician assistants may receive a maximum of 16.5 AAPA Category 1 CME credit(s) for completing this program.

American Nurses Credentialing Center (ANCC) accepts *AMA PRA Category 1 Credit™* from organizations accredited by the ACCME.

Contact Hours for Non-Physicians

The Johns Hopkins University has approved this activity for 16.5 contact hours for non-physicians.

Hotel and Travel Information

We strongly encourage you to book your accommodations at the Sheraton Inner Harbor Hotel, which is the conference headquarters hotel. The Johns Hopkins Office of CME makes every effort to secure the best rate for overnight accommodations. The rate is part of a negotiated conference package that incorporates many services. By staying at the host hotel and booking within the room block, you help us maintain current conference benefits and keep future registration fees reasonable. Please consider this when making your overnight accommodations decision.

Sheraton Inner Harbor Hotel (866) 716-8134
300 South Charles Street (410) 962-8300
Baltimore, Maryland 21202 Guest Fax: (410) 962-8211
Secure Fax for Credit Card payments: (410) 347-1850
Web Site: www.sheratoninnerharbor.com
To Make Reservations: <http://bit.ly/29Eh5LH>
Email: www.sheratoninnerbor.com

HOTEL RESERVATION CUT-OFF DATE: September 19, 2016

A limited block of sleeping rooms has been reserved for your convenience and will be available on a first come, first served basis.

The Sheraton Inner Harbor Hotel is centrally located in the heart of Baltimore's Inner Harbor. The official hotel of the Baltimore Orioles is just one block from the Convention Center, Harborplace and sport complexes. Make your reservation online at <http://bit.ly/29Eh5LH> or call the hotel directly and specify that you are attending the **Johns Hopkins Infectious Diseases Update** activity to receive the special group rate of \$209, single or double, plus tax. On-site parking is available at an additional charge. Check-in time is 3:00 p.m. Check out time is 12:00 noon. Complimentary round-trip transportation for attendees staying at conference headquarters hotel will be provided.

PROGRAM

Thursday, October 20, 2016

- 7:00 - 8:00 Registration and Continental Breakfast
- 8:00 - 8:10 **Welcome and Conference Goals**
Paul Auwaerter, MD, MBA
Jonathan Zenilman, MD
- 8:10 - 9:20 **Hot Topics in Infectious Diseases: 2016**
John Bartlett, MD
- 9:20 - 10:05 **Update on Zika Virus**
Anna Durbin, MD
- 10:05 - 10:50 **Helicobacter Pylori: What to Expect Regarding Diagnosis and Outcome**
Cynthia Sears, MD
- 10:50 - 11:05 Refreshment Break
- 11:05 - 11:50 **Update on Sexually Transmitted Diseases: Diagnostics and Therapies #1**
Anne Marie Rompalo, MD
- 11:50 - 12:35 **Infectious Mononucleosis and Mononucleosis Syndrome**
Paul Auwaerter, MD, MBA
- 12:35 - 1:35 **Lunch – Meet the Professors**
- **Tick-bourne Diseases Update**
Paul Auwaerter, MD, MBA
 - **Clostridium difficile Infection**
John Bartlett, MD
 - **Zika Virus**
Anna Durbin, MD
 - **STDs**
Khalil Ghanem, MD, PhD
Anne Marie Rompalo, MD
 - **HIV for Primary Care**
Erica Johnson, MD
 - **Complicated UTIs**
Michael Melia, MD
 - **Gastrointestinal Infections**
Cynthia Sears, MD
 - **Hepatitis C Treatment Strategies**
Mark Sulkowski, MD
 - **Skin and Soft Tissue Infections**
Jonathan Zenilman, MD
- 1:35 - 2:15 **Best Strategies for Treating Hepatitis C**
Mark Sulkowski, MD
- 2:15 - 3:00 **Update on Sexually Transmitted Diseases: Diagnostics and Therapies #2**
Khalil Ghanem, MD, PhD
- 3:00 - 3:15 Refreshment Break
- 3:15 - 4:00 **Complicated UTIs**
Michael Melia, MD
- 4:00 - 5:00 **Case Presentations**

The Johns Hopkins University School of Medicine takes responsibility for the content, quality and scientific integrity of this CME activity. This schedule is subject to change.

Friday, October 21, 2016

- 7:00 - 8:00 Continental Breakfast
- 8:00 - 8:45 **Community-Acquired Pneumonia**
Jennifer Townsend, MD
- 8:45 - 9:30 **HIV in Primary Care**
Erica Johnson, MD
- 9:30 - 10:15 **Infections During Pregnancy**
Jeanne Sheffield, MD
- 10:15 - 10:30 Refreshment Break
- 10:30 - 11:15 **ID Emergencies**
Christopher Lippincott, MD, MPH
- 11:15 - 12:00 **New Endocarditis Guidelines: Diagnostics and Treatment Changes**
Julie Trivedi, MD
- 12:00 - 1:00 **Lunch with the Professors**
- **General Infectious Diseases**
Paul Auwaerter, MD, MBA
 - **HIV for Primary Care**
Erica Johnson, MD
 - **ID Emergencies**
Christopher Lippincott, MD
 - **What is New with Zika and Other Emerging Infectious Diseases**
Thomas Quinn, MD
 - **Infections During Pregnancy**
Jeanne Sheffield, MD
 - **Hospitalists in Antibiotic Stewardship**
Jennifer Townsend, MD
 - **New Endocarditis Guidelines**
Julie Trivedi, MD
 - **Respiratory Diagnostics**
Alexandra Valsamakis, MD, PhD
 - **Non TB Mycobacteria**
Jonathan Zenilman, MD
- 1:00 - 1:45 **Skin and Soft Tissue Infections**
Jonathan Zenilman, MD
- 1:45 - 2:30 **Global Health Trends**
Thomas Quinn, MD
- 2:30 - 2:45 Refreshment Break
- 2:45 - 3:30 **Non-Tubercular Mycobacteria: When to Consider, How to Treat**
Jonathan Zenilman, MD
- 3:30 - 4:15 **Respiratory Diagnostics for the Hospital and the Clinic**
Alexandra Valsamakis, MD, PhD
- 4:15 - 4:30 **Summary**
- 4:30 **Adjourn**
You will receive an email notification to complete the evaluation form and to attest to the number of hours in attendance.

The Registration Desk will remain open during activity hours.

GENERAL INFORMATION (cont.)

To Register or for Further Information

Register Online

<https://hopkinscme.cloud-cme.com/aph.aspx?P=5&EID=6618>

Register by Phone (410) 502-9634

Confirmation/Certificates (410) 502-9634

General Information (410) 955-2959

E-mail the Office of CME cmenet@jhmi.edu

Follow us on Twitter: <http://twitter.com/HopkinsCME>

Facebook: <http://www.facebook.com/HopkinsCME>

NEW! Check out our mobile app CloudCME.

CloudCME 

Organization Code: **HopkinsCME**

Sponsoring Division Website: www.hopkinsmedicine.org/medicine/id

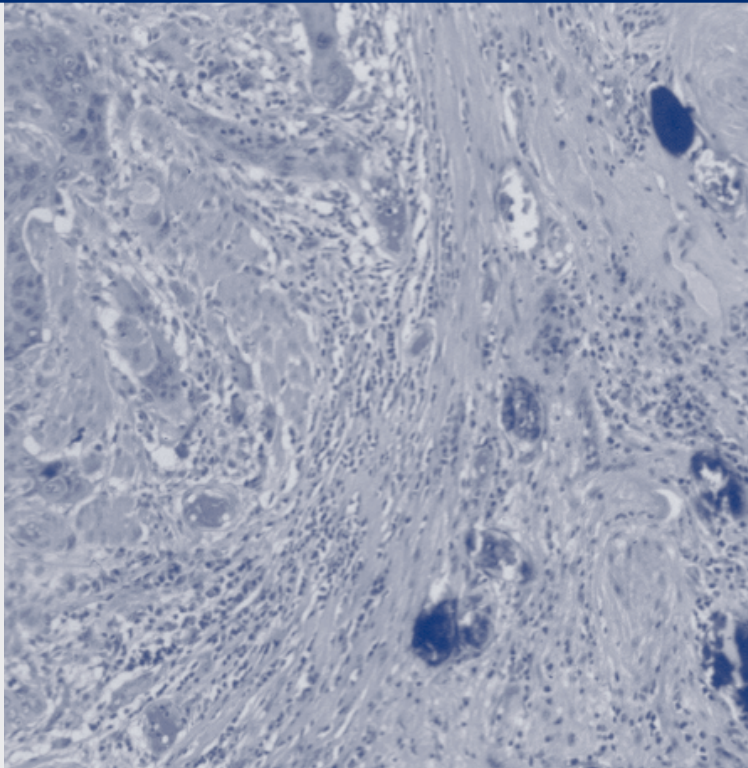
For general information, the direct link for this CME activity web page is:

<https://hopkinscme.cloud-cme.com/aph.aspx?P=5&EID=6618>

Acknowledgement

Applications for commercial support from health care related industries are pending. A complete list of contributors will be provided in the syllabus. Please note that commercial support received is solely for the educational component of the activity and will not be used to provide food and beverage.

Please note: The Physician Payments Sunshine Act was enacted by Congress to increase public awareness of financial relationships between drug and medical device manufacturers and physicians. In compliance with the requirements of this Act, the commercial supporter/s of this activity may require the Johns Hopkins University School of Medicine to report certain professional information (such as name, address, National Provider Identifier (NPI), and State License number) of physician attendees who receive complimentary food and beverage in conjunction with a CME activity. The commercial supporter is required to submit the collected data to the Centers for Medicare and Medicaid Services which will then publish the data on its website.



SPEAKERS

Activity Directors

Paul Auwaerter, MD, MBA

Professor of Medicine
Clinical Director, Division of
Infectious Diseases
Johns Hopkins University
School of Medicine

Erica Johnson, MD

Assistant Professor of Medicine
Program Director, Internal Medicine
Residency Program
Johns Hopkins Bayview Medical Center

Speakers

John Bartlett, MD

Professor Emeritus of Medicine
Johns Hopkins University
School of Medicine
Professor Emeritus of Epidemiology
Johns Hopkins Bloomberg
School of Public Health

Anna Durbin, MD

Professor of Public Health
Johns Hopkins Bloomberg
School of Public Health

Khalil Ghanem, MD, PhD

Associate Professor of Medicine
Deputy Director, Education
Department of Medicine
Johns Hopkins Bayview Medical Center

Christopher Lippincott, MD, MPH

Clinical Associate in Medicine
Johns Hopkins University
School of Medicine

Michael Melia, MD

Assistant Professor of Medicine
Associate Director, Infectious
Diseases Fellowship Program
Johns Hopkins University
School of Medicine

Thomas Quinn, MD

Professor of Medicine
Director, Johns Hopkins Center for
Global Health
Johns Hopkins Bloomberg
School of Public Health

Anne Marie Rompalo, MD

Professor of Medicine
Johns Hopkins University
School of Medicine

Jonathan Zenilman, MD

Professor of Medicine
Director, Infectious Diseases
Johns Hopkins Bayview Medical Center

Cynthia Sears, MD

Professor of Medicine
Johns Hopkins University
School of Medicine

Jeanne Sheffield, MD

Professor of Gynecology and Obstetrics
Director, Division of Maternal-Fetal
Medicine
Johns Hopkins University
School of Medicine

Mark Sulkowski, MD

Professor of Medicine
Medical Director,
Viral Hepatitis Center
Johns Hopkins University
School of Medicine

Jennifer Townsend, MD

Clinical Associate, Division of
Infectious Diseases
Instructor of Medicine
Johns Hopkins University
School of Medicine

Julie Trivedi, MD

Clinical Associate in Medicine
Johns Hopkins University
School of Medicine

Alexandra Valsamakis, MD, PhD

Associate Professor of Pathology
Director, Clinical Virology and
Molecular Microbiology
Johns Hopkins University
School of Medicine

Policy on Speaker and Provider Disclosure: It is the policy of the Johns Hopkins University School of Medicine that the speaker and provider globally disclose conflicts of interest. The Johns Hopkins University School of Medicine OCME has established policies in place that will identify and resolve all conflicts of interest prior to this educational activity. Detailed disclosure will be made in the instructional materials.

Registration Form

Course Number 80040443

Eleventh Annual Infectious Diseases Update for Primary Care and Hospital Medicine

October 20-21, 2016

To Register:

Online: <https://hopkinscme.cloud-cme.com/aph.aspx?P=5&EID=6618>

Phone (credit card only): (410) 502-9634 or **Fax:** (866) 510-7088

Or mail this form to the Johns Hopkins University, Office of Continuing Medical Education, 720 Rutland Avenue, Turner 20, Baltimore, Maryland 21205-2195. Include credit card information below.

FULL PAYMENT IS REQUIRED PRIOR TO THE START OF THE ACTIVITY.

I am a speaker for this Johns Hopkins activity.

Please type or print clearly:

Last Name		First Name		M.I.
Highest Degree	Primary Specialty		Hopkins Faculty/Staff Only -JHED ID:	
NPI#		State License#	State of License	
Mailing Address				
City		State	ZIP Code	Country
Daytime Telephone			Fax Number	
E-mail (required)				

Check here if you wish to receive e-mail notices about upcoming CME activities.

I plan to stay at the Sheraton Inner Harbor Hotel in Baltimore, Maryland.

What do you hope to learn by attending this activity?

Please notify us if you have any special needs.

How did you hear about this CME activity?

Registration Fees:

- Physicians \$395
- Residents*/Fellows*/Nurses/Nurse Practitioners/Physician Assistants/
Allied Health Professionals \$320
- *with verification of status

The registration fee includes instructional materials and food and beverage. For registrations received after 5:00 p.m. ET on October 14, 2016, include a \$50 late fee. On-site registrations are payable only by credit card.

Total amount enclosed \$ _____

Payment Type:

JHU Faculty/Staff Only: If you are using your Tuition Remission Benefit or an ION budget, please upload your fully completed and approved form in the payment section of the online activity link above.

TR Form: <http://benefits.jhu.edu/documents/trffacandstaff.pdf>

ION Form: <http://hopkinscme.edu/migration/IonRequest.pdf>

Check **Credit Card:** VISA MASTERCARD DISCOVER AMEX

Card # _____ Exp. Date _____

Billing Zip Code _____ Security Code _____

Name on Card _____

Signature and Date _____



Johns Hopkins University School of Medicine
Turner 20, 720 Rutland Avenue
Baltimore, Maryland 21205-2195

Non-Profit Org.
U.S. Postage
PAID
Baltimore, MD
Permit No. 5839

Eleventh Annual
Infectious Diseases
Update

for Primary Care and
Hospital Medicine

October 20-21, 2016

Baltimore, Maryland



DATED MATERIAL