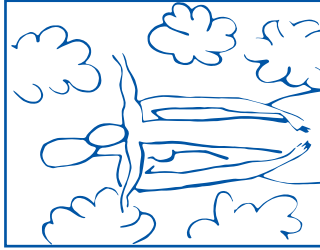




Office of Continuing Medical Education
720 Rutland Avenue / Turner 20
Baltimore, Maryland 21205-2195

**The Spectrum of
Developmental Disabilities XXXIX:
Autism: Issues in Identification,
Diagnosis, and Management**

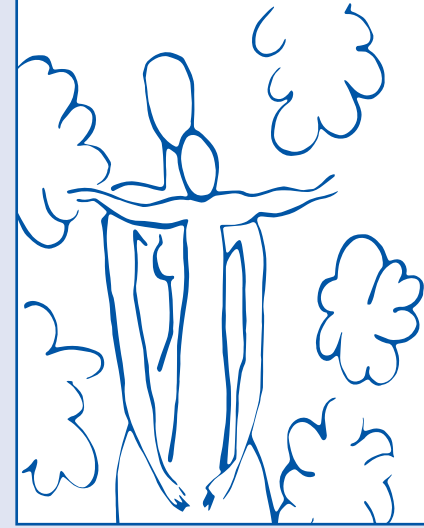


March 20-22, 2017
Johns Hopkins University
School of Medicine
Baltimore, Maryland

Mark Your Calendar for
Spectrum of Developmental Disabilities XL
March 19-21, 2018

Non-Profit Org.
U.S. Postage
PAID
Baltimore, MD
Permit No. 5839

**The Spectrum of
Developmental Disabilities XXXIX:
Autism: Issues in Identification,
Diagnosis, and Management**



March 20-22, 2017
**Johns Hopkins University School of Medicine
Thomas B. Turner Building
Baltimore, Maryland**

Jointly Provided by Johns Hopkins University School of Medicine
Division of Child Development, Department of Pediatrics
and
Kennedy Fellows Association
Kennedy Krieger Institute



DESCRIPTION

Autism remains an important but controversial public health issue. Its importance is demonstrated in many ways. The United States Department of Health and Human Services has established an inter-agency committee to coordinate HHS responses to autism and to advise the Secretary of HHS on issues related to autism. Each year it publishes a summary of advances in autism spectrum disorder. This year's summary focuses on early identification, neurobiology and treatment. According to the United States Department of Education, National Center for Education Statistics, almost half a million children in the United States receive special education services for autism. A recent Pub Med search for autism revealed that 4284 articles were published in calendar year 2015, including 8 reviews on sleep and 74 reviews on epilepsy. Autism is not without controversy. A recent report by the USPTF that questioned the need for autism specific screening of asymptomatic children was challenged by the American Academy of Pediatrics. Changing diagnostic criteria of autism and the new category of social (pragmatic) language disorder have created diagnostic confusion. Increasingly there is recognition that not all children will have their autism ameliorated by early intervention. Consequently, the focus on autism has been expanded beyond early identification and early intervention to how to manage children with autism spectrum disorder in school and how to effectively transition to adult services. A recent review of the behavioral therapies employed for autism showed that many were lacking evidence of effectiveness.

WHO SHOULD ATTEND

This activity is intended for pediatricians, neurodevelopmentalists, developmental behavioral pediatricians, child neurologists, child psychiatrists, educators, nurses, nurse practitioners, occupational therapists, psychologists, speech language pathologists, physical therapists, physician assistants and social workers.

OBJECTIVES

After attending this activity, the participant will demonstrate the ability to:

- List the reasons for the changing prevalence of autism spectrum disorder.
- Provide an operational definition of "social communication disorder" that is distinct from autism.
- Analyze the evidence for the role of environmental factors as an etiology for ASD.
- Distinguish other conditions that may cause impaired social interaction.
- Outline the content of a successful transition plan for a youth with ASD.

ACCREDITATION STATEMENT

This activity has been planned and implemented in accordance with the accreditation requirements and policies of the Accreditation Council for Continuing Medical Education (ACCME) through the joint providership of Johns Hopkins University School of Medicine and Kennedy Fellows Association. The Johns Hopkins University School of Medicine is accredited by the ACCME to provide continuing medical education for physicians.

CREDIT DESIGNATION STATEMENT

The Johns Hopkins University School of Medicine designates this live activity for a maximum of 18.25 *AMA PRA Category 1 Credits™*. Physicians should claim only the credit commensurate with the extent of their participation in the activity.

OTHER CREDIT

This program is offered for 1.75 CEUs (Various level; Professional area)



The Kennedy Krieger Institute is approved by the Continuing Education Board of the American Speech-Language-Hearing Association (ASHA) to provide continuing education activities in speech-language pathology and audiology. See course information for number of ASHA CEUs, instructional level and content area. ASHA CE Provider approval does not imply endorsement of course content, specific products or clinical procedures.

OTHER CREDIT (cont.)**Maintenance of Certification**

The American Board of Psychiatry and Neurology has reviewed The Spectrum of Developmental Disabilities XXXIX: Autism: Issues in Identification, Diagnosis, and Management and has approved this program as part of a comprehensive self-assessment program, which is mandated by the ABMS as a necessary component of Maintenance of Certification.

American Nurses Credentialing Center (ANCC) accepts *AMA PRA Category 1 Credits™* from organizations accredited by the ACCME.

American Academy of Nurse Practitioners National Certification Program accepts *AMA PRA Category 1 Credits™* from organizations accredited by the ACCME.

American Academy of Physician Assistants (AAPA) accepts certificates of participation for educational activities certified for *AMA PRA Category 1 Credits™* from organizations accredited by ACCME. Physician assistants may receive a maximum of 18.25 AAPA Category 1 CME credits for completing this program.

The Johns Hopkins University School of Medicine is authorized by the Maryland State Board of Examiners of Psychologists as a provider of continuing education. The Johns Hopkins University School of Medicine maintains responsibility for this program. A certificate for 18.25 CEUs will be awarded upon completion of this activity.

The Maryland Board of Social Work Examiners certifies that this program meets the criteria for 18.25 credit hours of Category 1 or 1.8 CEUs of continuing education for social workers and associates licensed in Maryland. The Johns Hopkins University School of Medicine is an approved sponsor of the Maryland Board of Social Work Examiners for continuing education credits for licensed social workers in Maryland.

The Johns Hopkins University has approved this activity for 18.25 **contact hours for non-physicians.**

POLICY ON SPEAKER AND PROVIDER DISCLOSURE

It is the policy of the Johns Hopkins University School of Medicine that the speaker and provider globally disclose conflicts of interest. The Johns Hopkins University School of Medicine OCME has established policies in place that will identify and resolve all conflicts of interest prior to this educational activity. Detailed disclosure will be made in the instructional materials.

REGISTRATION AND LOCATION

Monday, March 20, 2017 • 8:00 – 8:45 a.m.

Thomas B. Turner Building, Johns Hopkins University School of Medicine, 720 Rutland Avenue, Baltimore, Maryland 21205

The Turner Building is located on Rutland Avenue at Monument Street. Directions and campus parking information are available on our website under the Contact Us tab at <https://HopkinsCME.cloud-cme.com>. Handicapped parking is available in the nearby Rutland Garage. Complimentary round-trip transportation for attendees staying at conference headquarters hotel will be provided. Johns Hopkins is smoke-free.

HOTEL INFORMATION**Homewood Suites by Hilton**

625 South President Street
Baltimore, Maryland 21202

(410) 234-0999

FAX: (443) 392-9020

HOTEL RESERVATION CUT-OFF DATE: FEBRUARY 17, 2017

A limited block of sleeping rooms has been reserved for your convenience and will be available on a first-come, first-served basis.

Make your reservation online at <http://group.homewood-suites.com/JH-Developmental-Disabilities-2017> or call the hotel directly and specify that you are attending the **Johns Hopkins Developmental Disabilities** group to receive the special group rate of \$179 for studio king or \$189 for a one bedroom double, plus tax. Complimentary roundtrip transportation will be provided. Check-in time is 3:00 p.m. Check-out time is 12:00 noon.

FEES

REGISTRATION CUT-OFF DATE: March 14, 2017

Register Online at: <https://HopkinsCME.cloud-cme.com/aph.aspx?P=5&EID=6614>

Methods of Payment: We require full payment prior to the start of the activity. On-site payments by credit card only. The registration fee includes instructional materials, continental breakfasts, refreshment breaks and lunches.

Registration Fee \$545

Printed Syllabus..... \$35

You will receive a confirmation by e-mail. If you have not received it by March 14, 2017, call (410) 502-9634 to confirm that you are registered. A transcript of attendance will be available upon attestation of your credit hours and submission of the post activity online evaluation.

The Johns Hopkins University reserves the right to cancel or postpone any activity due to unforeseen circumstances. In this event, the University will refund the registration fee but is not responsible for travel expenses. Additionally, we reserve the right to change the venue to a comparable venue. Under such circumstances registrants will be notified as soon as possible.

LATE FEE AND REFUND POLICY

A \$50 late fee applies to registrations received after 5:00 p.m. EST on March 14, 2017. A handling fee of \$50 will be deducted for cancellation. An additional fee may apply for cancellation of other events, including workshops and social activities. Refund requests must be received by fax or mail by March 14, 2017. No refunds will be made thereafter. Transfer of registration to another Johns Hopkins activity in lieu of cancellation is not possible.

SYLLABUS

All registrants will receive a flash drive with the slides and paper for note-taking. This is included in the cost of your registration. A link to the syllabus will be provided via email shortly before the activity begins if you prefer to study or print the syllabus. A printed copy may be ordered at the time of registration for an additional fee of \$35. The printed copy will be provided during activity registration. Cancellations or refunds for the printed copy will not be permitted.

SOCIAL EVENT

A complimentary reception for registrants and faculty will be held Monday, March 20, 2017, 5:10 – 6:00p.m. Guests are invited to attend at an additional charge of \$20. Please indicate your attendance on the registration form.

EVALUATION AND OUTCOMES SURVEY

Post activity, an online evaluation form will be available to attendees to evaluate the activity and individual presentations and identify future educational needs. Upon completion of the evaluation, the learner must attest to the number of hours in attendance. Credits earned will be added to the learner's transcript and immediately available for print.

A survey will be sent to all physician attendees within three months post activity to assist us in determining what impact this activity had on the learner's practice.

EMERGENCY CALLS

On March 20-22, 2017, direct emergency calls to the Hopkins registration desk, (410) 955-3673. Messages will be posted for participants.

AMERICANS WITH DISABILITIES ACT

The Johns Hopkins University School of Medicine fully complies with the legal requirements of the ADA and the rules and regulations thereof. *Please notify us if you have any special needs.*

COMMERCIAL SUPPORT

The Johns Hopkins University School of Medicine did not solicit or receive commercial funding from any commercial entity, including pharmaceutical and medical device manufacturers, for this activity.

PROGRAM		
Monday, March 20, 2017		
<i>Morning</i>		
8:00 - 8:45	Registration and Continental Breakfast	
8:45 - 9:00	Welcome with Conference Goals Bruce Shapiro, MD, Tina Cheng, MD, MPH and Gary Goldstein, MD	
IDENTIFICATION <i>Moderator: Brian Rogers, MD</i>		
9:00 - 9:40	Is the Epidemic Slowing? Craig Newschaffer, PhD	
9:40 - 10:20	The Case for Universal Targeted Screening for Autism Daniel Coury, MD	
10:20 - 10:40	Refreshment Break	
10:40 - 11:25	Early Identification of Autism: How Early is Early? Rebecca Landa, PhD, CCC-SLP	
11:25 - 12:10	Children who "Outgrew" their Autism: Successful Intervention, Maturation or Misdiagnosis Catherine Lord, PhD	
12:10 - 12:30	Question and Answer All Morning Faculty	
12:30 - 1:30	Lunch	
<i>Afternoon</i>		
NATURE, NURTURE, AND THEIR INTERACTIONS <i>Moderator: Thomas Lock, MD</i>		
1:30 - 2:15	From Genes to Behavior Owen Rennert, MD	
2:15 - 3:00	Environmental Etiologies of Autism Omar Bagasra, MD, PhD	
3:00 - 3:20	Refreshment Break	
3:20 - 4:05	Anomalous Functional Connectivity in Autism: Associations with Diagnostic, Behavioral, and Motor Deficits Stewart H. Mostofsky, MD	
4:05 - 4:50	Is Autism an Inflammatory Disorder? Carlos A. Pardo, MD	
4:50 - 5:10	Question and Answer All Afternoon Faculty	
5:10 - 6:00	Welcome Reception	
Tuesday, March 21, 2017		
<i>Morning</i>		
8:00 - 8:30	Continental Breakfast	
IF NOT AUTISM, THEN WHAT? <i>Moderator: Mary Leppert, MB BCH</i>		
8:30 - 9:20	Temperament: Slow to Warm up Children and ASD Lonnie Zwaigenbaum, MD, FRCP (C)	
9:20 - 10:10	Is Autism a Valid Construct in People with Severe ID? James C. Harris, MD	
10:10 - 10:30	Refreshment Break	
10:30 - 11:15	Attention Deficits in Autism and Social Deficits in ADHD Kevin Antshel, PhD	
11:15 - 12:00	Anxiety: Diagnostic Confound and Comorbid Condition Roma Vasa, MD	
12:00 - 12:30	Question and Answer All Morning Faculty	
12:30 - 1:30	Lunch	
<i>Afternoon</i>		
MANAGEMENT ISSUES <i>Moderator: Scott Myers, MD</i>		
1:30 - 2:15	Sleep Jennifer Accardo, MD	
2:15 - 3:05	Food Selectivity, Restrictive Diets, and Supplements: Nutrition in ASD Eric Levey, MD	
3:05 - 3:25	Refreshment Break	
3:25 - 4:10	Epilepsy Sarah J. Spence, MD, PhD	
4:10 - 4:55	Targeted Pharmacotherapy: A View of the Future Andrew W. Zimmerman, MD	
4:55 - 5:25	Question and Answer All Afternoon Faculty	
<i>The Johns Hopkins University School of Medicine takes responsibility for the content, quality and scientific integrity of this CME activity. This schedule is subject to change.</i>		
Wednesday, March 22, 2017		
<i>Morning</i>		
8:00 - 8:30	Continental Breakfast	
INTERVENTIONS AND OUTCOMES <i>Moderator: Paul Lipkin, MD</i>		
8:30 - 9:15	Treatment Approaches for Preschoolers with ASD: Demystifying ABA Samuel L. Odom, PhD	
9:15 - 10:00	Developing a Comprehensive Inclusive Elementary School Program Kimberly Crossland, PhD	
10:00 - 10:40	Meeting the Social Challenges of Middle School Jill Locke, PhD, CCC-SLP	
10:40 - 11:00	Refreshment Break	
11:00 - 11:45	Transitional Issues: A Practical Approach Deepa Menon, MD	
11:45 - 12:30	Was Kanner Wrong? Pasquale J. Accardo, MD	
12:30 - 1:00	Question and Answer All Morning Faculty	
1:00	Adjourn - <i>You will receive an email notification to complete the evaluation form and to attest to the number of hours in attendance. The registration desk will remain open during conference hours.</i>	

TO REGISTER OR FOR FURTHER INFORMATION

Register Online <https://hopkinscme.cloud-cme.com/aph.aspx?P=5&EID=6641>

Register by Phone (410) 502-9634

Register by Fax (866) 510-7088

Confirmation/Certificates/Transcripts (410) 502-9634

General Information (410) 955-2959

E-mail the Office of CME cmenet@jhmi.edu

Follow us on Twitter: <http://twitter.com/HopkinsCME>

Facebook: <http://www.facebook.com/HopkinsCME>

NEW! Check out our mobile app CloudCME.

Organization Code: HopkinsCME

For website and CloudCME app technical difficulties: cmetechnsupport@jhmi.edu

For general information and speaker disclosure statements, please visit the activity webpage at: <https://hopkinscme.cloud-cme.com/aph.aspx?P=5&EID=6641>

ACTIVITY DIRECTOR

Bruce Shapiro, MD
Arnold J. Capute MD, MPH Chair in Neurodevelopmental Disabilities
Professor of Pediatrics
Johns Hopkins University School of Medicine
Vice President of Training
Kennedy Krieger Institute

JOHNS HOPKINS AND KENNEDY KRIEGER FACULTY

Tina Cheng, MD, MPH
Director, Department of Pediatrics
Given Foundation Professor of Pediatrics
Johns Hopkins University School of Medicine
Professor of Population, Family and Reproductive Health
Johns Hopkins Bloomberg School of Public Health
Pediatrician-in-Chief,
The Johns Hopkins Hospital

Gary Goldstein, MD
President & Chief Executive Officer
Kennedy Krieger Institute
Professor of Neurology and Pediatrics
Johns Hopkins University School of Medicine

James C. Harris, MD
Professor of Psychiatry and Behavioral Sciences – Child Psychiatry
Johns Hopkins University School of Medicine

Rebecca Landa, PhD, CCC-SLP
Professor of Psychiatry and Behavioral Sciences
Johns Hopkins University School of Medicine
Director, Center for Autism and Related Disorders
Kennedy Krieger Institute

Mary L. Leppert, MB BCH
Assistant Professor of Pediatrics
Johns Hopkins University School of Medicine
Director, Center for Development and Learning
Kennedy Krieger Institute

Eric Levey, MD
Associate Professor of Pediatrics
Johns Hopkins University School of Medicine
Medical Director, Pediatric Feeding Disorders Program
Kennedy Krieger Institute

Paul Lipkin, MD
Associate Professor of Pediatrics
Johns Hopkins University School of Medicine
Director, Medical Informatics and Interactive Autism Network
Kennedy Krieger Institute

Deepa Menon, MD
Assistant Professor of Neurology
Johns Hopkins University School of Medicine

Stewart Mostofsky, MD
Professor, Neurology and Psychiatry and Behavioral Sciences
Batza Family Foundation Research Chair
Johns Hopkins University School of Medicine
Director, Center for Neurodevelopmental and Imaging Research
Kennedy Krieger Institute

Carlos A. Pardo, MD
Associate Professor of Neurology
Division of Neuroimmunology and Neuroinfectious Disorders
Johns Hopkins University School of Medicine

Roma Vasa, MD
Associate Professor of Psychiatry
Johns Hopkins University School of Medicine

GUEST SPEAKERS

Jennifer Accardo, MD
Assistant Professor of Pediatrics
Virginia Commonwealth University

Pasquale J. Accardo, MD
James H. Franklin Professor of Developmental Pediatrics
Virginia Commonwealth University

Kevin Antshel, PhD
Associate Professor, Psychology
Director of Clinical Training
Syracuse University

Omar Bagasra, MD, PhD
Professor of Biology
Director of the South Carolina Center for Biotechnology
Claffin University
Clinical Professor of Pathology, Microbiology and Immunology
University of South Carolina School of Medicine
Adjunct Professor, Arnold School of Public Health

Daniel Coury, MD
Professor of Pediatrics and Psychiatry
The Ohio State University College of Medicine
Chief, Section of Developmental and Behavioral Pediatrics
Nationwide Children's Hospital

Kimberly Crossland, PhD
Associate Professor
Child and Family Studies
University of South Florida

Thomas Lock, MD
Professor of Clinical Pediatrics
Director, Section of Developmental Pediatrics
Indiana University School of Medicine
Riley Hospital for Children

Jill Locke, PhD, CCC-SLP
Research Assistant Professor
Speech and Hearing Sciences
University of Washington Autism Center

Catherine Lord, PhD
Professor of Psychology in Psychiatry
Weill Cornell Medicine
Director of the Center for Autism and the Developing Brain
NewYork-Presbyterian Hospital

Scott Myers, MD
Clinical Associate Professor of Pediatrics
Temple University School of Medicine
Neurodevelopmental Pediatrician
Autism and Developmental Medicine Institute
Geisinger Health System

Craig Newschaffer, PhD
Director, AJ Drexel Autism Institute
Professor of Epidemiology and Biostatistics
Drexel University School of Public Health

Samuel L. Odom, PhD
Professor of Education
University of North Carolina-Chapel Hill
Director, Frank Porter Graham Child Development Institute

Owen Rennert, MD
Emeritus Scientist
National Institute of Child Health and Human Development
National Institutes of Health
Emeritus Professor of Pediatrics
Georgetown University

Brian Rogers, MD
Professor of Pediatrics
Director, Institute on Development and Disability
Oregon Health and Science University

Sarah J. Spence, MD, PhD
Assistant Professor of Neurology
Harvard Medical School
Co-Director, Autism Clinic
Boston Children's Hospital

Andrew W. Zimmerman, MD
Clinical Professor of Pediatrics and Neurology
Center for Autism and Neurodevelopmental Disorders (CANDO)
University of Massachusetts Medical School

Lonnie Zwaigenbaum, MD, FRCP (C)
Stollery Children's Hospital Foundation Chair in Autism
Professor of Pediatrics
University of Alberta

REGISTRATION FORM Course Number 80040259/6641

The Spectrum of Developmental Disabilities XXXIX • Autism: Issues in Identification, Diagnosis, and Management • March 20-22, 2017

To Register: Online: <https://hopkinscme.cloud-cme.com/aph.aspx?P=5&EID=6641>
By fax: (866) 510-7088 **By phone:** (410) 502-9634

Or mail this form to the Johns Hopkins University, Office of Continuing Medical Education, 720 Rutland Avenue, Turner Room 20, Baltimore, Maryland 21205-2195. Include e-check or credit card information below.
FULL PAYMENT IS REQUIRED PRIOR TO THE START OF ACTIVITY.

I am a Johns Hopkins speaker for this activity. *Please type or print clearly:*

last name		first name		m.i.	
highest degree	primary specialty		Hopkins faculty/staff only JHED ID		
For Physicians Only:	NPI – 10 digits		State License #		State of License
mailing address					
city		state	ZIP	country	
daytime telephone		fax number			
e-mail (required)					

Check here if you wish to receive e-mail notices about upcoming CME activities.
 I plan to stay at the Homewood Suites by Hilton in Baltimore, Maryland.

What do you hope to learn by attending this activity? _____
Please notify us if you have any special needs. _____

Registration Fee \$545
 Printed Syllabus..... \$35
The registration fee includes instructional materials and food and beverage. For registrations received after 5:00 p.m. EST on March 14, 2017, include a \$50 late fee. On-site registrations are payable only by credit card.

Social Event – Welcome Reception
 I will attend
 Number of guests at \$20 each _____

Total amount \$ _____

Payment Type:

JHU Faculty/Staff Only: If you are using your Tuition Remission Benefit or an ION budget, please upload your fully completed and approved form in the payment section of the online activity link above.

TR Form: <http://benefits.jhu.edu/documents/trffacandstaff.pdf>

ION Form: <http://hopkinscme.edu/migration/IonRequest.pdf>

e-Check: Routing #: _____ Account #: _____
 Credit Card: VISA MASTERCARD DISCOVER AMEX

Card # _____ - _____ - _____ - _____ Exp. Date _____

Billing Zip Code _____ Security Code _____

Name on Card _____ Signature and Date _____