

SIXTH ANNUAL

Johns Hopkins

Spine Workshop

August 26-27, 2016

Baltimore, Maryland

DATED MATERIAL



August 26-27, 2016
Vista Labs
A Cadaveric Surgical Training Center
Baltimore, Maryland
This activity is approved for AMA PRA Category 1 Credits™.

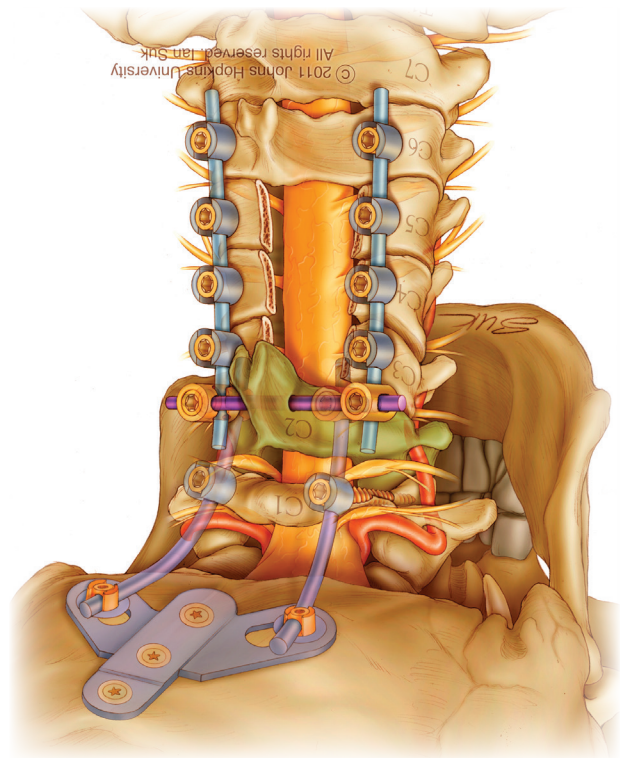
Spine Workshop

Johns Hopkins

SIXTH ANNUAL

Johns Hopkins University
School of Medicine
Department of Neurosurgery
Presents

Illustration by Ian Suk, Johns Hopkins University, Department of Neurosurgery



Spine Workshop

DESCRIPTION

With safety as an utmost priority in spinal surgery, it is imperative that surgical trainees receive continual anatomical education. This is accomplished in the operating room while trainees learn on live patients. However, the safest way to learn is via cadaveric instruction. With the cost of health care increasing, the decrease in industry sponsored cadaveric courses due to political pressures against industry-sponsored medical education, and decreased working hours for physicians, such education is now at a premium. A spine cadaveric workshop is not only demanded but required in the current medical education so that surgeons can continue to be trained in safe and effective surgical techniques on the spine.

WHO SHOULD ATTEND

This activity is intended for spinal neurosurgeons and orthopedic surgeons.

OBJECTIVES

After attending this activity, the participant will demonstrate the ability to:

- State indications and options for patients with spinal disorders.
- Describe technical instructions in decompressing and stabilizing the spinal column using minimally-invasive techniques as well as standard and new techniques.
- Practice and improve spinal techniques before performing on a patient.
- Discuss the pros and cons of each procedure enabling them to consider and choose alternatives.
- Assess the anatomy of the spine, including occipital, thoracic, lumbar, sacral and pelvic regions in spine surgery.

ACCREDITATION STATEMENT

The Johns Hopkins University School of Medicine is accredited by the Accreditation Council for Continuing Medical Education (ACCME) to provide continuing medical education for physicians.

CREDIT DESIGNATION STATEMENT

The Johns Hopkins University School of Medicine designates this live activity for a maximum of 20 *AMA PRA Category 1 Credits*[™]. Physicians should claim only the credit commensurate with the extent of their participation in the activity.

POLICY ON SPEAKER AND PROVIDER DISCLOSURE

It is the policy of the Johns Hopkins University School of Medicine that the speaker and provider disclose real or apparent conflicts of interest relating to the topics of this educational activity, and also disclose discussions of unlabeled/unapproved uses of drugs or devices during their presentation(s). The Johns Hopkins University School of Medicine OCME has established policies in place that will identify and resolve all conflicts of interest prior to this educational activity. Detailed disclosure will be made in the activity handout materials

General Information

REGISTRATION

Friday, August 26, 2016 • 6:30 - 7:00 a.m.

LOCATION

Vista Labs
1030 North Charles Street
Baltimore, Maryland 21201

FEES

REGISTRATION CUT-OFF DATE: AUGUST 21, 2016

Methods of Payment: Payment by check or credit card must accompany the registration form prior to the activity. On-site payments by credit card only. Foreign payments must be by credit card or with a U.S. Dollar World Money Order. The registration fee includes instructional materials, continental breakfasts, refreshment breaks and lunches.

Physicians\$1,000
Residents*/Fellows*/Nurses/
Allied Health Professionals\$500
*with verification of status

You will receive a confirmation by e-mail if you have provided your e-mail address. Otherwise confirmation will be sent by mail. If you have not received it by August 21, 2016, call (410) 502-9634 to confirm that you are registered. A certificate of attendance will be sent by October 11, 2016 to the e-mail address you provide on the registration form.

The Johns Hopkins University reserves the right to cancel or postpone any activity due to unforeseen circumstances. In this event, the University will refund the registration fee but is not responsible for travel expenses. Additionally, we reserve the right to change the venue to a comparable venue. Under such circumstances registrants will be notified as soon as possible.

LATE FEE AND REFUND POLICY

A \$50 late fee applies to registrations received after 5:00 p.m. ET on August 21, 2016. A handling fee of \$50 will be deducted for cancellation. An additional fee may apply for cancellation of other events, including workshops and social activities. Refund requests must be received by fax or mail by August 21, 2016. No refunds will be made thereafter. Transfer of registration to another Johns Hopkins conference in lieu of cancellation is not possible.

HOTEL AND TRAVEL INFORMATION

Hilton Garden Inn Baltimore (888) 429-7482
Harbor East (410) 234-0065
625 South President Street FAX: (410) 234-0299
Baltimore, Maryland 21202

Web Site: www.baltimoreinnerharbor.stayhgi.com

HOTEL RESERVATION CUT-OFF DATE:

July 27, 2016

A limited block of sleeping rooms has been reserved for your convenience and will be available on a first come, first served basis.

The Hilton Garden Inn Baltimore Inner Harbor, pleasantly situated in Harbor East, blends well with its fashionable surroundings and offers excellent accommodations within walking distance of downtown Baltimore. Make your reservation online at www.baltimoreinnerharbor.stayhgi.com or call the hotel directly and specify that you are attending the Johns Hopkins Johns Hopkins Spine Workshop to receive the special group rate of \$169, single or double, plus tax. Complimentary roundtrip transportation will be provided. On-site parking is available at an additional charge. Check-in time is 3:00 p.m. Check-out time is 12:00 p.m.

EVALUATION

A form will be available to attendees to evaluate each session and each speaker's presentation, as well as to identify future educational needs.

OUTCOMES SURVEY

A survey will be sent to all physician attendees within three months post activity to assist us in determining what impact this activity had on the attendee's practice.

EMERGENCY CALLS

During the days of this activity only, August 26-27, 2016, direct emergency calls to (410) 637-3705 and ask that a message be sent to the Hopkins registration desk. Messages will be posted for participants.

AMERICANS WITH DISABILITIES ACT

The Johns Hopkins University School of Medicine fully complies with the legal requirements of the ADA and the rules and regulations thereof. *Please notify us if you have any special needs.*

TO REGISTER or FOR FURTHER INFORMATION

Register Online (credit card and eCheck)

Register by Phone (credit card only)

Register by Fax

Confirmation/Certificates

General Information

E-mail the Office of CME

Follow us on Twitter: <http://twitter.com/HopkinsCME>

Facebook: <http://www.facebook.com/HopkinsCME>

For general information, the direct link for this CME activity web page is:

<http://www.hopkinscme.cloud-cme.com>

www.HopkinsCME.edu

(410) 502-9636

(866) 510-7088

(410) 502-9636

(410) 955-2959

cmenet@jhmi.edu

Program

FRIDAY, August 26, 2016

- 6:30 - 7:00 Registration and Continental Breakfast
7:00 - 7:30 **Welcome, Introduction and Opening Remarks**
Daniel Sciubba, MD

Lecture Session I - Occipito-Cervical Access and Instrumentation

- 7:30 - 7:50 **Anterior Approaches to Subaxial Cervical Spine (ACDF, ACDF, Odontoid Screw)**
James Harrop, MD
7:50 - 8:10 **Posterior Cervical Instrumentation (Lateral Mass, C1-2, Translaminar, Occipito-Cervical)**
Ali Ozturk, MD
8:10 - 8:30 **Anterior Approaches to Craniocervical Junction**
Sheng-fu Larry Lo, MD, MHS
8:30 - 8:45 Refreshment Break

Concurrent Laboratory Session I - Cervical Approaches and Instrumentation

Hands-on Cadaver Workshop 1

- 8:45 - 10:00 **Anterior Cervical Discectomy, Anterior Cervical Corpectomy, Cage and Plate, Odontoid Screw**
All Faculty
10:00 - 11:45 **Occipital, C1, C2, Lateral Mass Screws, Translaminar Screws**
All Faculty
Hands-on Cadaver Workshop 2
9:00 - 11:45 **Transoral Dissection Table (1 table run concurrently)**
Daniel Sciubba, MD
11:45 - 1:00 Working Lunch
12:00 - 12:30 **Cervical Degenerative Case Discussion**
Ali Bydon, MD
12:30 - 1:00 **Cervical Spine Trauma**
Charles Sansur, MD

Lecture Session II - Posterior Instrumentation and Approaches to Thoracic, Lumbar, Sacrum and Pelvis

- 1:00 - 1:30 **Thoracic, Lumbar, Sacral and Pelvic Screw Placement**
Christopher Neal, MD
1:30 - 2:00 **Posterior Lumbar Osteotomies (Ponte, Smith-Peterson Osteotomy, Pedicle Subtraction Osteotomy)**
Brian O'Shaughnessy, MD
2:00 - 2:30 **Posterior Thoracic Osteotomies (Ponte, Smith-Peterson Osteotomy, Vertebral Column Resection)**
Timothy Witham, MD, FACS

Laboratory Session II - Posterior Instrumentation and Approaches to Thoracic, Lumbar, Sacrum and Pelvis

- 2:30 - 3:30 **Placement of Pedicle Screws in Thoracic, Lumbar, Sacrum and Pelvis**
All Faculty
3:30 - 4:30 **L3 Pedicle Subtraction Osteotomy**
All Faculty
4:30 - 5:30 **T8 Vertebral Column Resection**
All Faculty
5:30 - 5:50 **Cervical Tumor Case Review**
Ilya Laufer, MD
5:50 - 6:10 **Cervical Deformity Case Review**
Ali Bydon, MD

SATURDAY, August 27, 2016

- 6:30 - 6:50 Continental Breakfast
6:50 - 7:00 **Introduction and Goals for the Day**
Daniel Sciubba, MD

Lecture Session III – Minimally Invasive Approaches to T-L-S Spine

- 7:00 - 7:30 **Spinal Biomechanics/Global Balance**
Ryan Kretzer, MD
7:30 - 8:00 **Minimally Invasive Posterior Approaches (Discectomy, Laminectomy, TLIF, Percutaneous Screws)**
Ali Baaj, MD
8:00 - 8:30 **Minimally Invasive Lateral Approaches to T-L Spine (XLIF, DLIF)**
Nicholas Theodore, MD
8:30 - 9:00 **Minimally Invasive Approaches to Adult Degenerative Spinal Deformity**
Ali Baaj, MD

Concurrent Laboratory Session III – Minimally Invasive Approaches to T-L-S Spine

Hands-on Cadaver Workshop 3

- 9:00 - 10:30 **Minimally Invasive TLIF with Placement of Percutaneous Pedicle Screws (L4-5)**
All Faculty
10:30 - 12:00 **Minimally Invasive Lateral Approaches to Lumbar Spine (XLIF, DLIF) (L3-4)**
All Faculty
12:00 - 1:00 Working Lunch
12:00 - 12:30 **MIS Case Discussion**
Ali Ozturk, MD and Reza Yassari, MD
12:30 - 1:00 **Adult Deformity Case Discussion**
Brian Neuman, MD

Lecture Session IV – Anterior and Lateral Open Approaches to T-L Spine

- 1:00 - 1:30 **Anterior Transcavitary Approaches (Sternotomy, Manubriotomy, Aorticaval Windows)**
Daniel Sciubba, MD
1:30 - 2:00 **Lateral Open Access to T-L Spine (Thoracotomy, Thoraco-abdominal Approach)**
Ziya Gokaslan, MD

Laboratory Session IV – Anterior and Lateral Open Approaches to T-L Spine

- 2:00 - 3:00 **Sternotomy and Trap-door Thoracotomy**
All Faculty
3:00 - 4:00 **Thoraco-Abdominal/10th Rib Approach, L1 Vertebrectomy, T12-L2 Reconstruction**
All Faculty
4:00
Adjourn
Please complete and return the Evaluation and Credit Report Forms. The Registration Desk will remain open during conference hours.

Acknowledgement

We wish to acknowledge the following companies that have provided or pledged an educational grant in support of this activity. Please note that commercial support received is solely for the educational component of the activity and will not be used to provide food and beverage.

DePuy Synthes Businesses

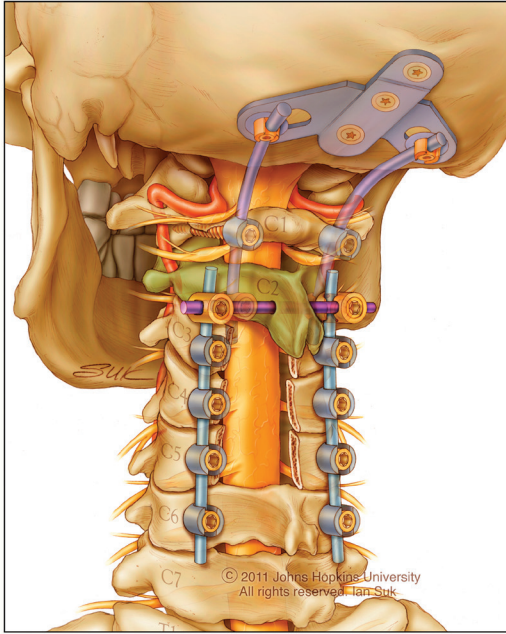
Globus Medical, Inc.

Please note: The Physician Payments Sunshine Act was enacted by Congress to increase public awareness of financial relationships between drug and medical device manufacturers and physicians. In compliance with the requirements of this Act, the commercial supporter/s of this activity may require the Johns Hopkins University School of Medicine to report certain professional information (such as name, address, National Provider Identifier (NPI), and State License number) of physician attendees who receive complimentary food and beverage in conjunction with a CME activity. The commercial supporter is required to submit the collected data to the Centers for Medicare and Medicaid Services which will then publish the data on its website.

Speakers

Activity Director

Daniel Sciubba, MD
Associate Professor of Neurosurgery, Oncology and Orthopaedic Surgery



Johns Hopkins Speakers

Ali Bydon, MD
Associate Professor of Neurosurgery

Brian Neuman, MD
Assistant Professor of Orthopaedic Surgery

Nicholas Theodore, MD
Professor of Neurology

Timothy Witham, MD, FACS
Professor of Neurosurgery and Orthopaedic Surgery

Guest Speakers

Ali Baaj, MD
Assistant Professor of Neurosurgery
Adult and Pediatric Spine Surgery
Weill Cornell Medical College
New York Presbyterian Hospital
New York, New York

Ziya Gokaslan, MD
Gus Stoll, MD Professor of Neurosurgery
Chair, Department of Neurosurgery
The Warren Alpert Medical School of
Brown University
Providence, Rhode Island

James Harrop, MD
Professor of Neurosurgery and Orthopaedic Surgery
Thomas Jefferson University
Philadelphia, Pennsylvania

Ryan Kretzer, MD
Neurosurgeon
Director, Spine Surgery
Carondelet Neurological Institute
St. Joseph's Hospital
Tucson, Arizona

Ilya Laufer, MD
Assistant Attending, Memorial Sloan-Kettering
Cancer Center
Assistant Professor, Weill Medical College of
Cornell University
New York, New York

Sheng-fu Larry Lo, MD, MHS
Assistant Professor of Neurosurgery
Columbia University College of Physicians and Surgeons

Christopher Neal, MD
Associate Program Director of Neurosurgery
Walter Reed National Medical Center
Bethesda, Maryland

Brian O'Shaughnessy, MD
Neurological Surgery
Howell Allen Clinic
Nashville, Tennessee

Ali Ozturk, MD
Assistant Professor of Medicine
Pennsylvania Hospital
Philadelphia, Pennsylvania

Charles Sansur, MD
Assistant Professor of Neurosurgery
Director, Complex Spine Surgery
University of Maryland Medical Center
Baltimore, Maryland

Reza Yassari, MD
Associate Professor of Neurosurgery
Director, Neurosurgery Residency Program
Director, Spinal Oncology
Albert Einstein College of Medicine
Bronx, New York

Registration Form

Course Number 80039981

Sixth Annual Johns Hopkins Spine Workshop

August 26-27, 2016

To Register: **Online** (credit card and eCheck): www.HopkinsCME.edu
By fax: (866) 510-7088
By phone (credit card only): (410) 502-9636

Or mail this form to the Johns Hopkins University, Office of Continuing Medical Education, P.O. Box 64128, Baltimore, Maryland 21264-4128. Include check payable to **HOPKINS/80039981**, or include credit card information below.

PAYMENT MUST ACCOMPANY FORM TO CONFIRM YOUR REGISTRATION.

I am a Johns Hopkins speaker for this activity.

Please type or print clearly:

last name		first name		m.i.	
highest degree	primary specialty			Hopkins faculty/staff only JHED ID	
For Physicians Only:	NPI – 10 digits	State License #		State of License	
mailing address					
city		state	ZIP	country	
daytime telephone		fax number			
e-mail					

You will receive a confirmation notice and your attendance certificate by e-mail if you provide your e-mail address.

Check here if you wish to receive e-mail notices about upcoming CME activities.

What do you hope to learn by attending this activity?

Please notify us if you have any special needs.

Registration Fees:

Physicians.....\$1,000
 Residents*/Fellows*/Nurses/Allied Health Professionals.....\$500
*with verification of status

The registration fee includes instructional materials and food and beverage. For registrations received after 5:00 p.m. ET on August 21, 2016, include a \$50 late fee. On-site registrations are payable only by credit card.

Total amount enclosed \$ _____

Payment Type:

JHU Faculty/Staff Only: If you are using your Tuition Remission Benefit or an ION budget, please complete this registration form and return with appropriate payment processing form to OCME, Turner 20.
Forms can be found on-line at <http://www.hopkinscme.edu/Resources/resources.aspx>.

Check (See instructions on top of form.)
 Credit Card: VISA MASTERCARD DISCOVER AMEX

Card # _____ - _____ - _____ - _____ Exp. Date _____

Name on Card

Signature and Date