

Management of the Lung Nodule for the Primary Care Provider: Lung Cancer Screening to Lung Cancer

November 10, 2023

Albert H. Owens, Jr. Auditorium
David H. Koch Cancer Research Building
Sidney Kimmel Comprehensive Cancer Center at Johns Hopkins
Baltimore, Maryland



Presented by
Johns Hopkins University School of Medicine
Department of Pulmonary and Critical Care Medicine

This activity has been approved for AMA PRA Category 1 Credits™.



JOHNS HOPKINS
MEDICINE

DESCRIPTION

A cutting edge educational symposium focused on advances in lung cancer screening, diagnosis, and therapies geared towards the general practitioner that will aim to improve patient care, referrals, and communication between primary care providers and thoracic oncology specialists.

Lung cancer is the leading cause of cancer death in the United States, with an estimated 238,340 new diagnoses of lung cancer in 2023 resulting in more than 127,070 deaths, making lung cancer more deadly than breast, prostate and colon cancer combined. Although the number of new cases of lung cancer is declining, the death rate from lung cancer continues to be staggering. Among new diagnoses in the United States, approximately 40% occur in current smokers, 40% in former smokers, and 20% in patients who have never smoked. Difficulties faced in the treatment of lung cancer are compounded by the frequent late stage of diagnosis in combination with associated environmental and genetic factors. Despite evidence that lung cancer screening using low dose CT scans is beneficial and can shift the trend from later to earlier stage disease at time of diagnosis, only ~6% of the country's eligible population is being screened for lung cancer. Recent advances in lung cancer research have provided improved understanding and stratification of different types of non-small-cell lung cancer. This has led to further research which has and continues to identify targetable molecular and genetic mutations as well as biomarkers of immunotherapeutics. As our knowledge improves, the previous practice to treat all non-small-cell lung cancer with cytotoxic chemotherapeutic agents has undergone immense change. We are now entering an era of personalized therapy in which lung cancer is characterized by specific potentially targetable genetic alterations and biomarkers to immunotherapy. Recognizing these targets, developing and testing targeted chemotherapeutics, evaluating mechanisms of tumor resistance and suitability for immunotherapy require a multi-disciplinary approach and collaborative efforts. At the center of care remains the general practitioner who is often faced with fielding most questions and is responsible for knowing who to screen and when to refer to a subspecialist. This activity is designed to ensure that we continue to move the needle for positive outcomes in lung cancer by addressing common questions and providing the latest updates on personalized therapies so that primary providers are knowledgeable and comfortable with lung cancer screening, answering patient queries, knowing when to refer and what to expect when their patients have lung cancer.

WHO SHOULD ATTEND

This activity is intended for physicians with specialties in critical care medicine, family medicine, general practice, internal medicine, medical oncology, oncology, pulmonary and critical care, pulmonary disease, nurse practitioners, nurses, physician assistants, physician trainees, students, residents, and fellows.

OBJECTIVES

After attending this activity, the learner will demonstrate the ability to:

- Discern the patient selection criteria for lung cancer screening.
- Describe the appropriate selection of diagnostic modalities in the work-up of a patient with suspected lung cancer.
- Identify and describe updates and advances in chemotherapy treatment for patients with advanced lung cancer.
- Discuss new advances in immunotherapy in the treatment of lung cancer.
- Evaluate patients with newly diagnosed lung nodules.

ACCREDITATION STATEMENT

The Johns Hopkins University School of Medicine is accredited by the Accreditation Council for Continuing Medical Education (ACCME) to provide continuing medical education for physicians.



CREDIT DESIGNATION STATEMENT

The Johns Hopkins University School of Medicine designates this live activity for a maximum of 7.75 AMA PRA Category 1 Credits™. Physicians should claim only the credit commensurate with the extent of their participation in the activity.

American Board of Internal Medicine's (ABIM) Maintenance of Certification (MOC) Program

Successful completion of this CME activity, which includes participation in the evaluation component, enables the participant to earn up to 7.75 MOC points in the American Board of Internal Medicine's (ABIM) Maintenance of Certification (MOC) medical knowledge program. Participants will earn MOC points equivalent to the amount of CME credits claimed for the activity. It is the CME activity provider's responsibility to submit participant completion information to ACCME for the purpose of granting ABIM MOC credit.

OTHER CREDITS

American Academy of Nurse Practitioners National Certification Program accepts AMA PRA Category 1 Credit™ from organizations accredited by the ACCME.

American Nurses Credentialing Center (ANCC) accepts AMA PRA Category 1 Credit™ from organizations accredited by the ACCME.

PAs may claim a maximum of 7.75 Category 1 credits for completing this activity. **NCCPA** accepts AMA PRA Category 1 Credit™ from organizations accredited by ACCME or a recognized state medical society.

The Johns Hopkins University has approved this activity for 7.75 **contact hours for non-physicians.**

POLICY ON PRESENTER AND PROVIDER DISCLOSURE

It is the policy of the Johns Hopkins School of Medicine that the presenter and provider globally disclose conflicts of interest. The Johns Hopkins School of Medicine OCME has established policies in place to identify and mitigate relevant conflicts of interest prior to this educational activity. Detailed disclosure will be made prior to presentation of the education.



GENERAL INFORMATION

REGISTRATION

Friday, November 10, 2023, 7:30 AM ET

LOCATION

Albert H. Owens, Jr. Auditorium

David H. Koch Cancer Research Building
Sidney Kimmel Comprehensive Cancer Center at Johns Hopkins
1650 E. Jefferson Street
Baltimore, Maryland 21231

The street level entrance to the Albert H. Owens, Jr. Auditorium is via the Bunting Blaustein Cancer Center lobby located on Jefferson Street, west of Broadway. Directions and campus parking information are available on our website under the Contact Us tab at HopkinsCME.cloud-cme.com. The closest garage is the McElderry Street Garage, which is located off of Caroline Street between Monument Street and Orleans Street (Route 40). Handicapped parking is also available in the McElderry Street Garage. **Johns Hopkins is smoke-free.**

FEES

Register Online:

hopkinscme.cloud-cme.com/aph.aspx?P=5&EID=46144

Methods of Payment: Learners must register and submit full payment prior to the start of the activity. On-site payments can only be accepted if made by learners via credit card through the online portal by 5:00 p.m. ET on the first day of the activity. The registration fee includes instructional materials, continental breakfast, refreshment breaks and lunch.

Physicians	\$295.00
Nurses/NPs/PAs/Allied Health Professionals	\$100.00
Residents*/Fellows*	\$100.00

*with verification of status

You will receive a confirmation by e-mail. If you have not received it by **November 3, 2023**, call (410) 502-9636 to confirm that you are registered. A transcript of attendance will be available upon attestation of your credit hours and submission of the post activity online evaluation.

The Johns Hopkins University reserves the right to cancel or postpone any activity due to unforeseen circumstances. In this event, the University will refund the registration fee but is not responsible for travel expenses. Additionally, we reserve the right to change the venue to a comparable venue. Under such circumstances registrants will be notified as soon as possible.

LATE FEE AND REFUND POLICY

A \$50 late fee applies to registrations received after 5:00 p.m. ET on **Friday, November 3, 2023**. A handling fee of \$50 will be deducted for cancellation. An additional fee may apply for cancellation of other events, including workshops and social activities. Refund requests must be received by fax or mail by **Friday, November 3, 2023**. No refunds will be made thereafter. Transfer of registration to another Johns Hopkins activity in lieu of cancellation is not possible.

SYLLABUS

The syllabus will be accessible online and via your mobile device in the CloudCME App prior to the activity.

HOW TO OBTAIN CREDIT

Post activity, an online evaluation will be available to attendees to evaluate the activity and individual presentations and to identify future educational needs. Upon completion of the evaluation, the learner must attest to the number of hours in attendance. Credits earned will be added to the learner's transcript and immediately available for print. **The last day to access the evaluation and attest to your credits is December 25, 2023.**

An outcome survey will be sent to all physician attendees within two months post activity to assist us in determining what impact this activity had on the learner's practice.

AMERICANS WITH DISABILITIES ACT

The Johns Hopkins School of Medicine fully complies with the legal requirements of the ADA and the rules and regulations thereof. *Please notify us if you have any special needs.*

TO REGISTER OR FOR FURTHER INFORMATION

Register Online

hopkinscme.cloud-cme.com/aph.aspx?P=5&EID=46144

Register by Phone (410) 502-9636
Register by Fax (866) 510-7088
Confirmation/Certificates/Transcripts (410) 502-9636
General Information (410) 955-2959
E-mail the Office of CME cmenet@jhmi.edu

Follow us on Twitter: twitter.com/HopkinsCME

Facebook: facebook.com/HopkinsCME

CloudCME 

Check out our mobile app CloudCME.
Organization Code: *HopkinsCME*

For technical assistance with website, CloudCME or credits, please visit our tech support help page:
hopkinscme.cloud-cme.com/about/help

Division of Pulmonary and Critical Care Medicine Website:
www.hopkinsmedicine.org/pulmonary

For general information, please visit the activity webpage at
hopkinscme.cloud-cme.com/aph.aspx?P=5&EID=46144

PROGRAM

FRIDAY, NOVEMBER 10, 2023

8:00–8:10am	Welcome and Conference Goals Christine Argento, MD
8:10–8:40am	Lung Cancer Overview, Risk Factors and Additive Risks Julie Brahmer, MD
8:40–9:00am	Talking to Patients About Lung Cancer Screening: Why It Is Time Well-Spent Kimberly Peairs, MD
9:00–9:20am	Lung Cancer Screening: Why, How and Where Christine Argento, MD
9:20–9:40am	Pulmonary Nodules: What to do With My Patient Who Has One? Lonny Yarmus, DO, MBA
9:40–10:00am	Not All Nodules Are Created Equal: How to Interpret Radiology Recommendations Cheng Ting Lin, MD
10:00–10:15am	Panel Q&A
10:15–10:30am	Refreshment Break
10:30–10:50am	Tobacco Cessation: How to Get Your Patients More Help Panagis Galiatsatos, MD, MHS
10:50–11:10am	Lung Cancer Diagnosis and Staging: Why it Matters and Who Your Patients Should See Hans Lee, MD
11:10–11:40am	Disparities in Lung Cancer and Screening: Racial, Gender and More Krystle Pew, MD
11:40am–12:00pm	How to Optimize the Care of Your Patient with Lung Cancer: MDC Russell Hales, MD
12:00–12:15pm	Panel Q&A
12:15–1:00pm	Lunch
1:00–1:20pm	Early Disease Treatment Options (Surgical and Radiation Including Proton Therapy) Ranh Voong, MD, MPH and Jinny Ha, MD, MHS
1:20–1:40pm	The Neoadjuvant Wave: A Cure is Coming! Patrick Forde, MBBCh
1:40–2:00pm	Advanced Disease Treatment Options Kristen Marrone, MD
2:00–2:30pm	Thoracic Oncology Survivorship Initiatives Jean Butler, RN, Sarah Sagorsky, PA, Ramsey Valenti, NP
2:30–2:45pm	Panel Q&A
2:45–3:00pm	Refreshment Break

3:00–3:20pm	Management of Malignant Pleural Effusions Jeffrey Thiboutot, MD, MHS
3:20–3:40pm	What to look for and what to do: Immunotherapy Complications Karthik Suresh, MD
3:40–3:50pm	Panel Q&A
3:50–4:50pm	Tumor Board with Case Presentations and Discussions Steve Yang, MD; Joy Feliciano, MD; Russ Hales, MD; Kelvin Kai-Wen Hong, MBBCh, MBBS; Cheng Ting Lin, MD; Richard James Battaferano, MD, PhD
4:50–5:00pm	Summary, Wrap-Up and Adjourn Christine Argento, MD

You will receive an email notification to complete the evaluation form and to attest to the number of hours in attendance.

The registration desk will remain open during conference hours.

ACKNOWLEDGEMENT

Applications for commercial support from health care related industries are pending. A complete list of contributors will be provided in the syllabus. Please note that commercial support received is solely for the educational component of the activity and will not be used to provide food and beverage.

Please note: The Physician Payments Sunshine Act was enacted by Congress to increase public awareness of financial relationships between drug and medical device manufacturers and physicians. In compliance with the requirements of this Act, the commercial supporter/s of this activity may require the Johns Hopkins School of Medicine to report certain professional information (such as name, address, National Provider Identifier (NPI), and State License number) of physician attendees who receive complimentary food and beverage in conjunction with a CME activity. The commercial supporter is required to submit the collected data to the Centers for Medicare and Medicaid Services which will then publish the data on its website.

SPEAKERS

ACTIVITY DIRECTOR

Christine Argento, MD

Associate Professor of Medicine
Johns Hopkins University

JOHNS HOPKINS SPEAKERS

Richard Battafarano, MD, PhD

Regional Director of General Thoracic Surgery
Associate Professor of Surgery

Julie Brahmer, MD

Co-Director of the Upper Aerodigestive Department
Bloomberg-Kimmel Institute for Cancer Immunotherapy
Professor of Oncology

Jean Butler, RN

Thoracic Multidisciplinary Clinic Nurse Coordinator

Josephine Feliciano, MD

Associate Professor of Oncology

Patrick Forde, MBBCh

Co-Director, Division of Upper Aerodigestive Malignancies
Associate Professor of Oncology

Panagis Galiatsatos, MD

MHS Director, Tobacco Treatment Clinic
Associate Professor of Medicine

Jinny Ha, MD, MHS

Assistant Professor of Surgery

Russell Hales, MD

Director, Thoracic Oncology Multidisciplinary Program
Assistant Professor of Radiation Oncology and Molecular Radiation Sciences

Kelvin Hong, MBBCh, MBBs

Executive Vice Chair, Interventional Radiology
Associate Professor of Radiology and Radiological Science

Hans Joo Lee, MD

Associate Professor of Medicine

Andrew Lerner, MD

Director of Interventional Pulmonology, Sibley Memorial Hospital
Assistant Professor of Medicine

Cheng Ting Lin, MD

Associate Professor of Radiology and Radiological Science

Kristen Marrone, MD

Assistant Professor of Oncology

Krystle Pew, MD, MPH

Assistant Professor of Medicine

Sarah Sagorsky, PA

Physician Assistant

Karthik Suresh, MD

Associate Professor of Medicine

Jeffrey Thiboutot, MD, MHS

Assistant Professor of Medicine

Ramsey Valenti, CRNP, DNP, AGNP-C

Nurse Practitioner

K. Ranh Voong, MD, MPH

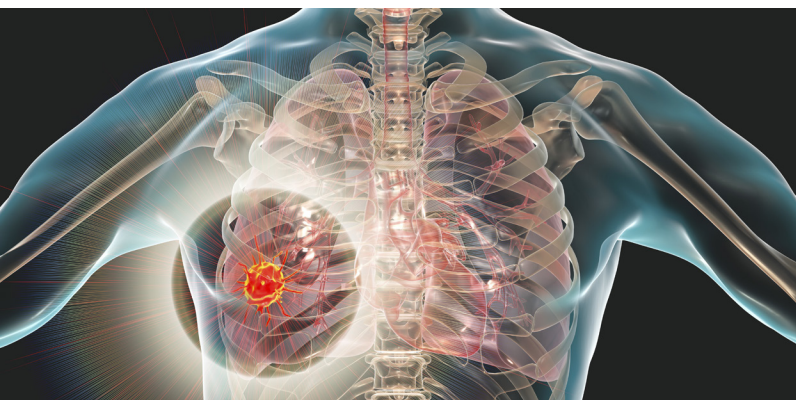
Assistant Professor of Radiation Oncology and Molecular Radiation Sciences

Stephen Yang, MD

Associate Vice Chair for Faculty Development
Professor of Surgery and Oncology

Lonny Yarmus, DO, MBA, FCCP

Vice Chair for Clinical Business Development & Strategy
Department of Medicine
Professor of Medicine and Oncology



Management of the Lung Nodule for the Primary Care Provider: Lung Cancer Screening to Lung Cancer

November 10, 2023

Register Online

hopkinscme.cloud-cme.com/aph.aspx?P=5&EID=46144